

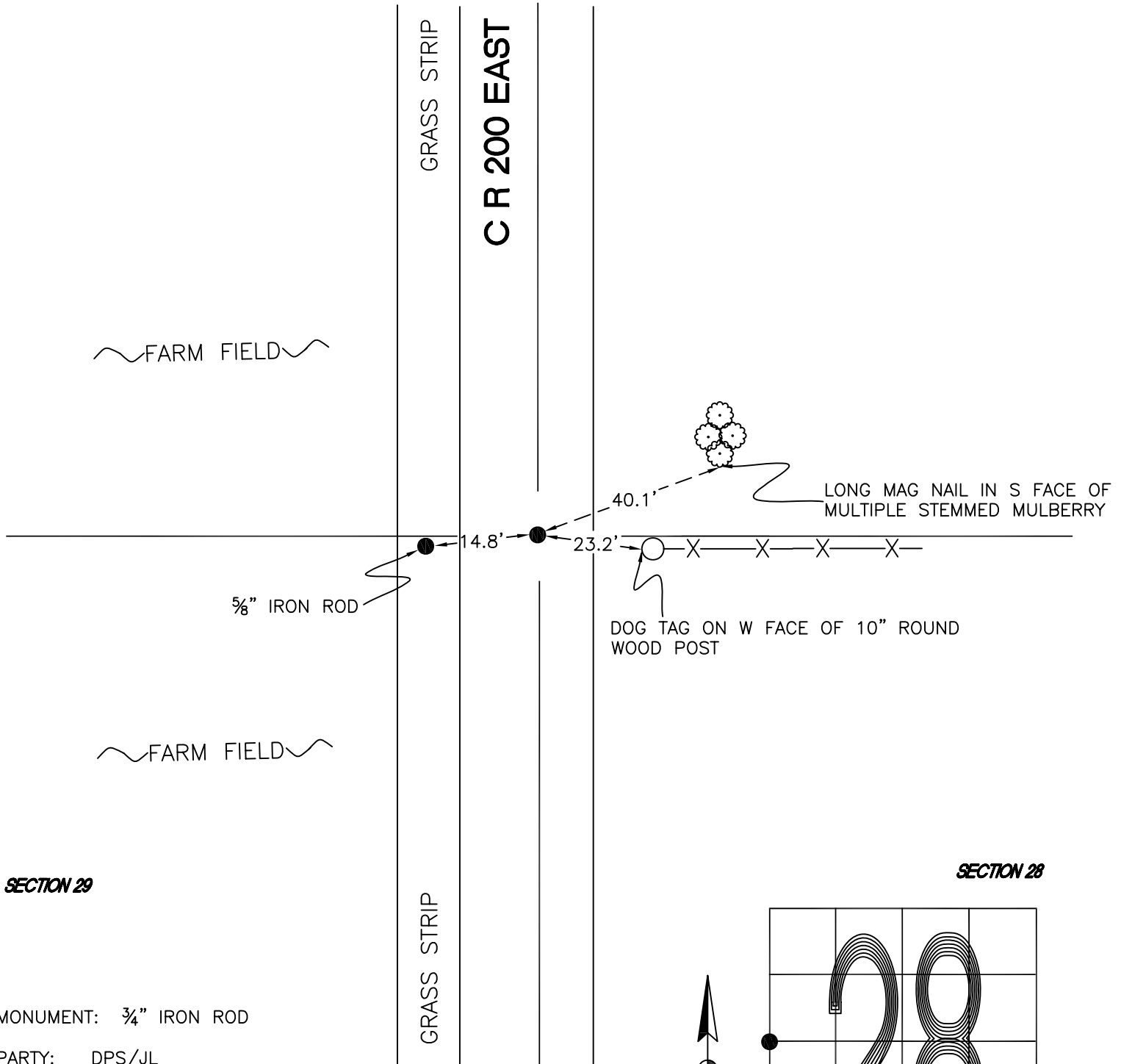
DAVIS TOWNSHIP

T 34 N, R 2 W

T9

SECTION 29

SECTION 28



SECTION 29

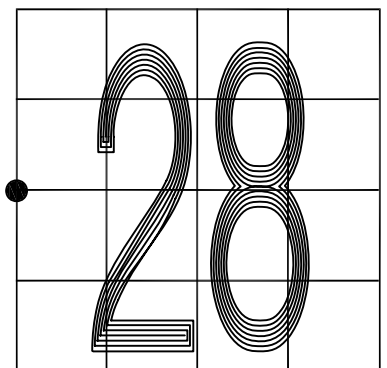
SECTION 28

MONUMENT: 3/4" IRON ROD

PARTY: DPS/JL

DATE: 5-24-16

COMMENTS: 3" BELOW GRADE; 2 1/2' E OF 200E.



CORNER LOCATION IN THE SECTION

T9