

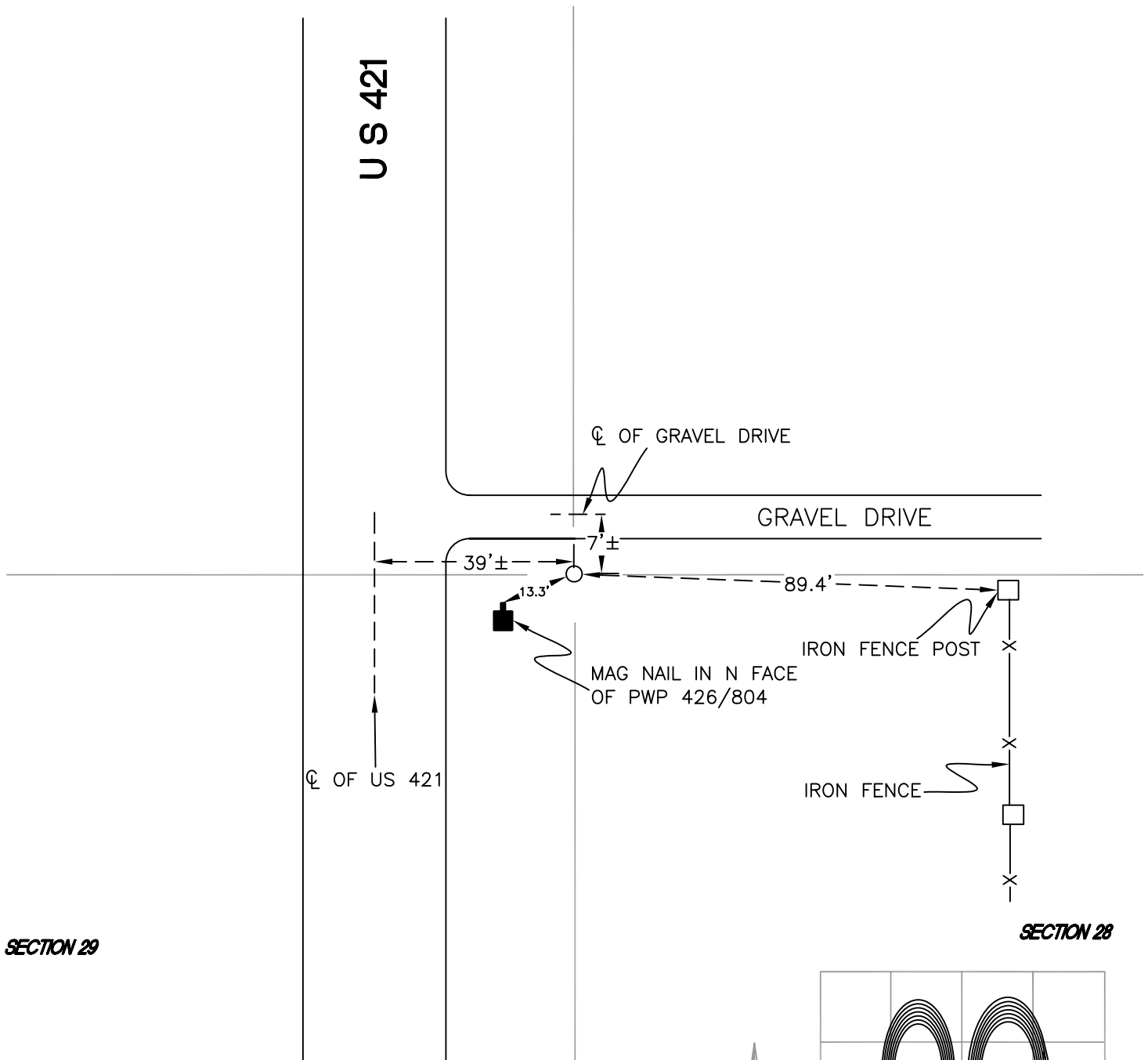
# RAILROAD TOWNSHIP

T 32 N, R 4 W

## T9

SECTION 29

SECTION 28



SECTION 29

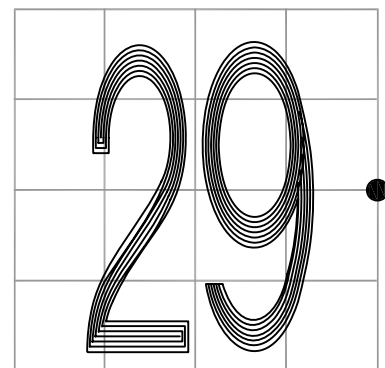
SECTION 28

MONUMENT: 1" IRON PIPE

PARTY: DPS/JL

DATE: 5/8/2015

COMMENTS: PIPE WAS FOUND BENT; IT WAS STRAIGHTENED OUT. 4" BELOW GRADE. SET BY WIGHTMAN CRAMER IN 1995; USED IN SURVEY DOCUMENT KK875.



CORNER LOCATION IN THE SECTION

# T9