

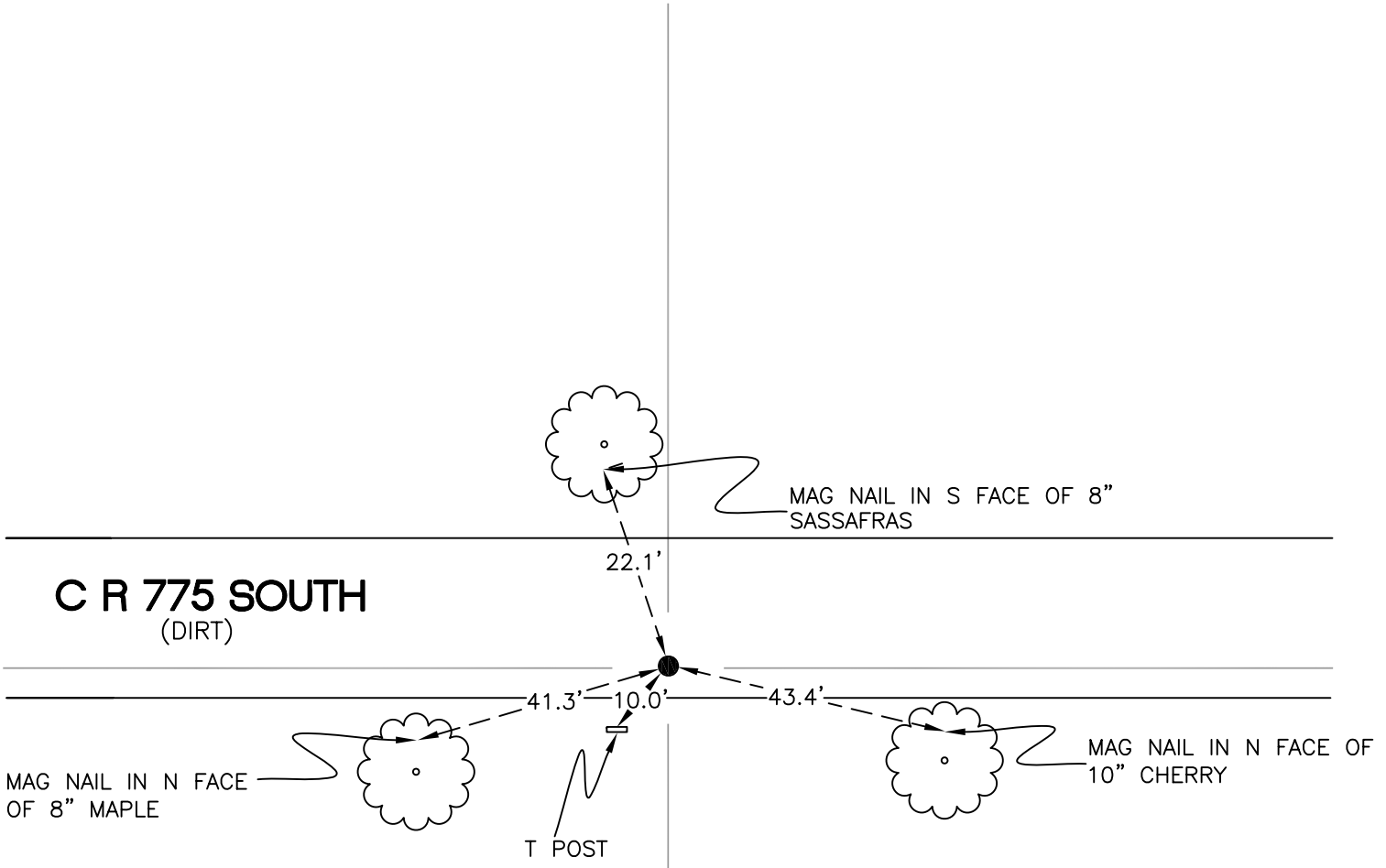
NORTH BEND TOWNSHIP

T 32 N, R 1 W

U19

SECTION 26

SECTION 26



SECTION 26

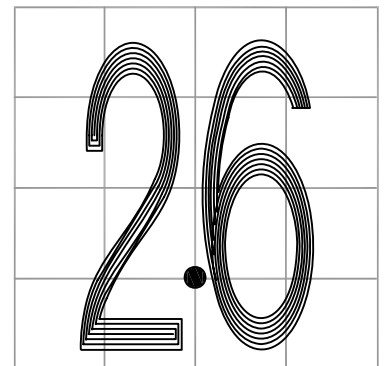
SECTION 26

MONUMENT: 5/8" IRON ROD w/ PLYMOUTH LAND SURVEYING CAP

PARTY: JL/AO

DATE: 6/13/12

COMMENTS: MONUMENT AND REFERENCES FOUND IN 1977 HAVE DISAPPEARED. CURRENT MONUMENT WAS SET BY PLYMOUTH LAND SURVEY IN 2010 IN JOB 10-36.



CORNER LOCATION IN THE SECTION

U19