

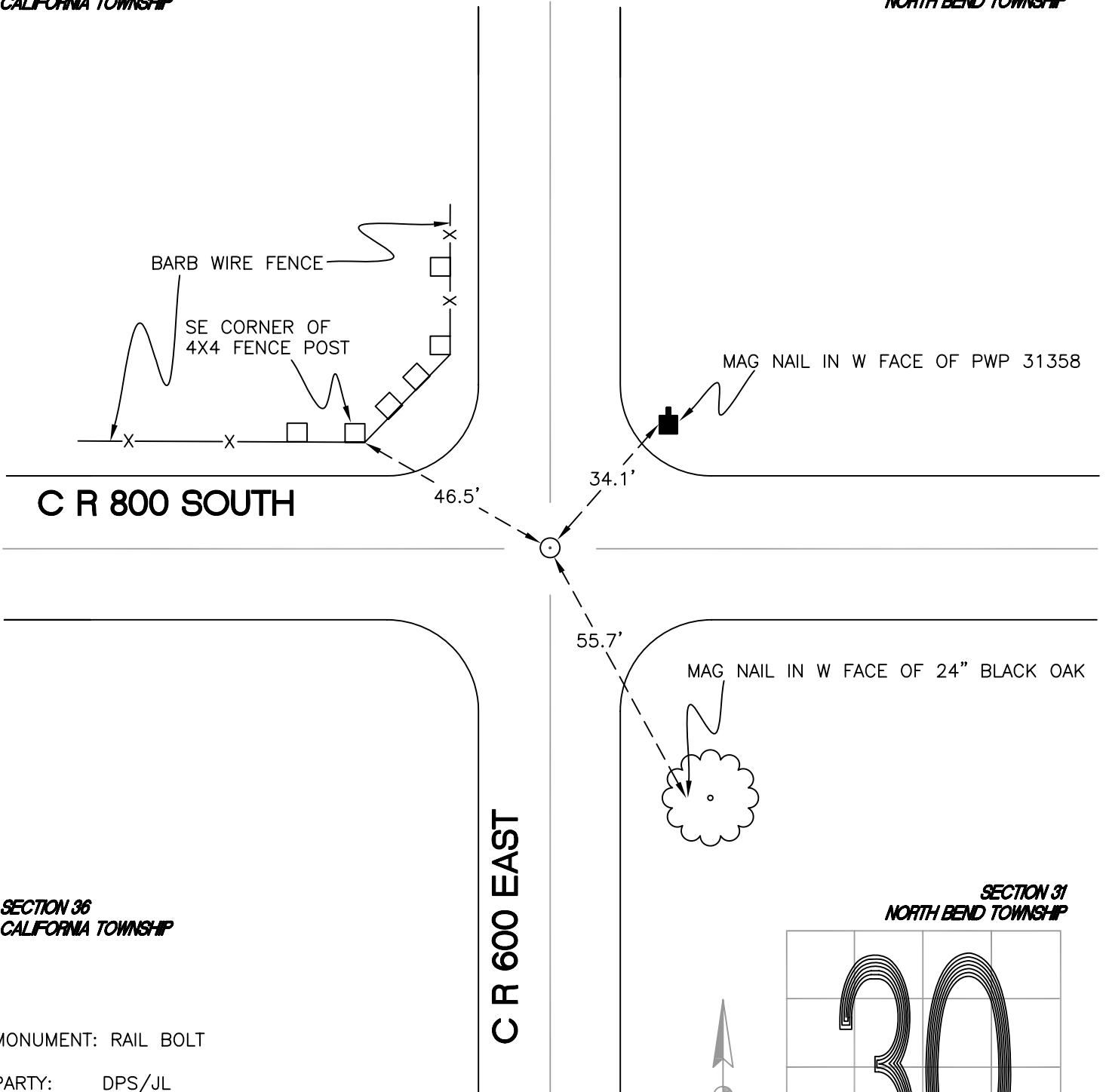
NORTH BEND TOWNSHIP

T 32 N, R 1 W

V1

SECTION 25
CALIFORNIA TOWNSHIP

SECTION 30
NORTH BEND TOWNSHIP

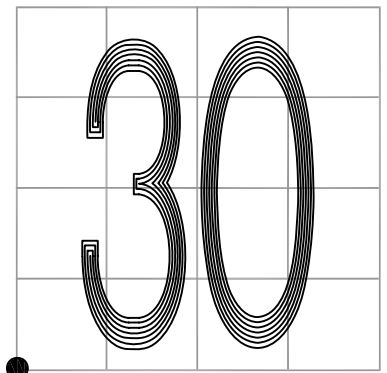


MONUMENT: RAIL BOLT

PARTY: DPS/JL

DATE: 7/7/14

COMMENTS: SET BY TERRITORIAL ENGINEERING IN 2000
IN DOCUMENT # 2001449891. FOUND IN
2012 BY JL/AO.



CORNER LOCATION IN THE SECTION

V1