

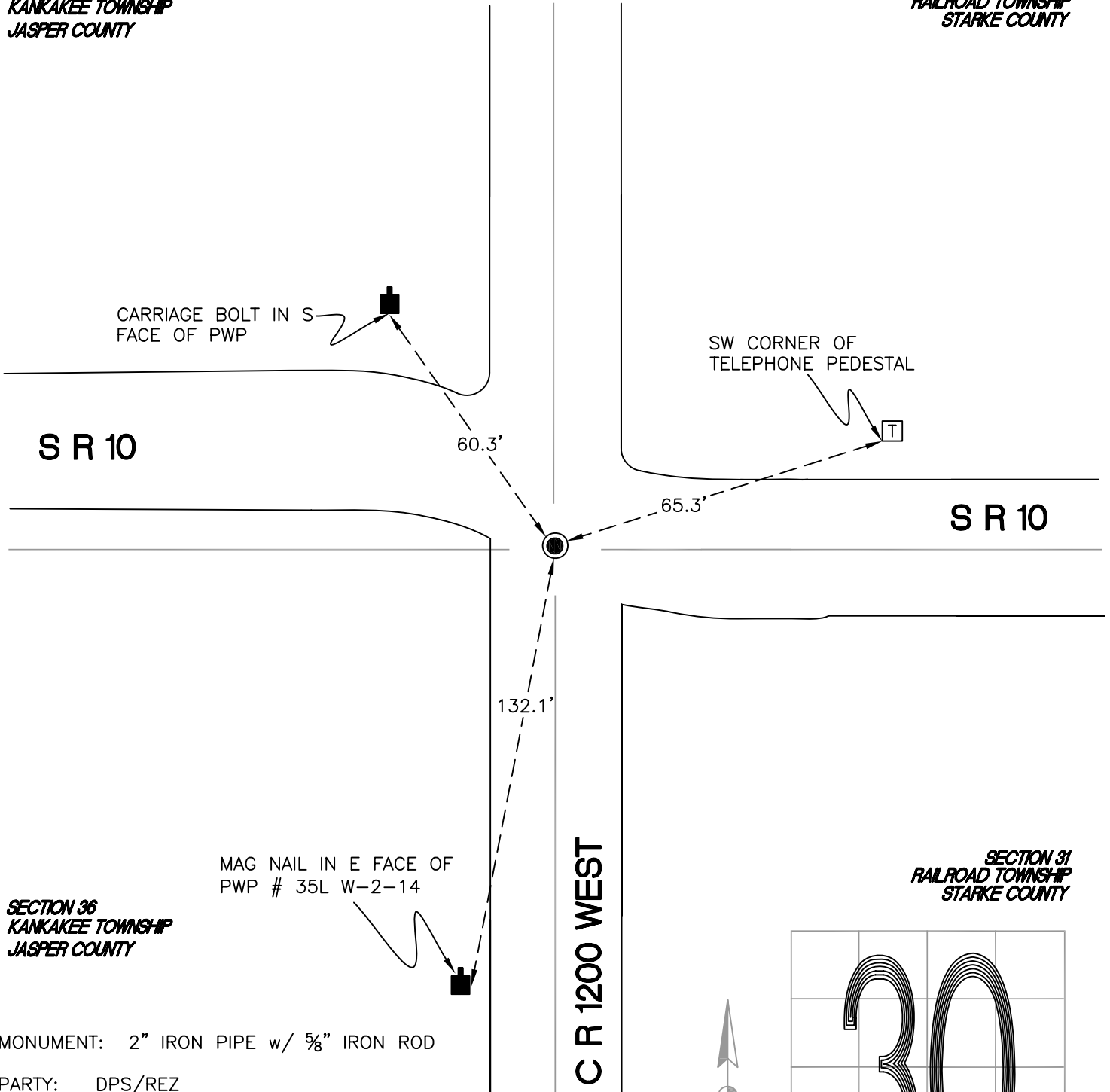
RAILROAD TOWNSHIP

T 32 N, R 4 W

V1

SECTION 25
KANKAKEE TOWNSHIP
JASPER COUNTY

SECTION 30
RAILROAD TOWNSHIP
STARKE COUNTY

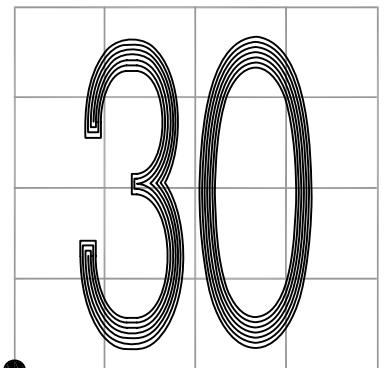


MONUMENT: 2" IRON PIPE w/ 5/8" IRON ROD

PARTY: DPS/REZ

DATE: 2015

COMMENTS: FOUND BY RP/JBS IN 1980 AND SJF/DWC IN 1990.



CORNER LOCATION IN THE SECTION

V1