

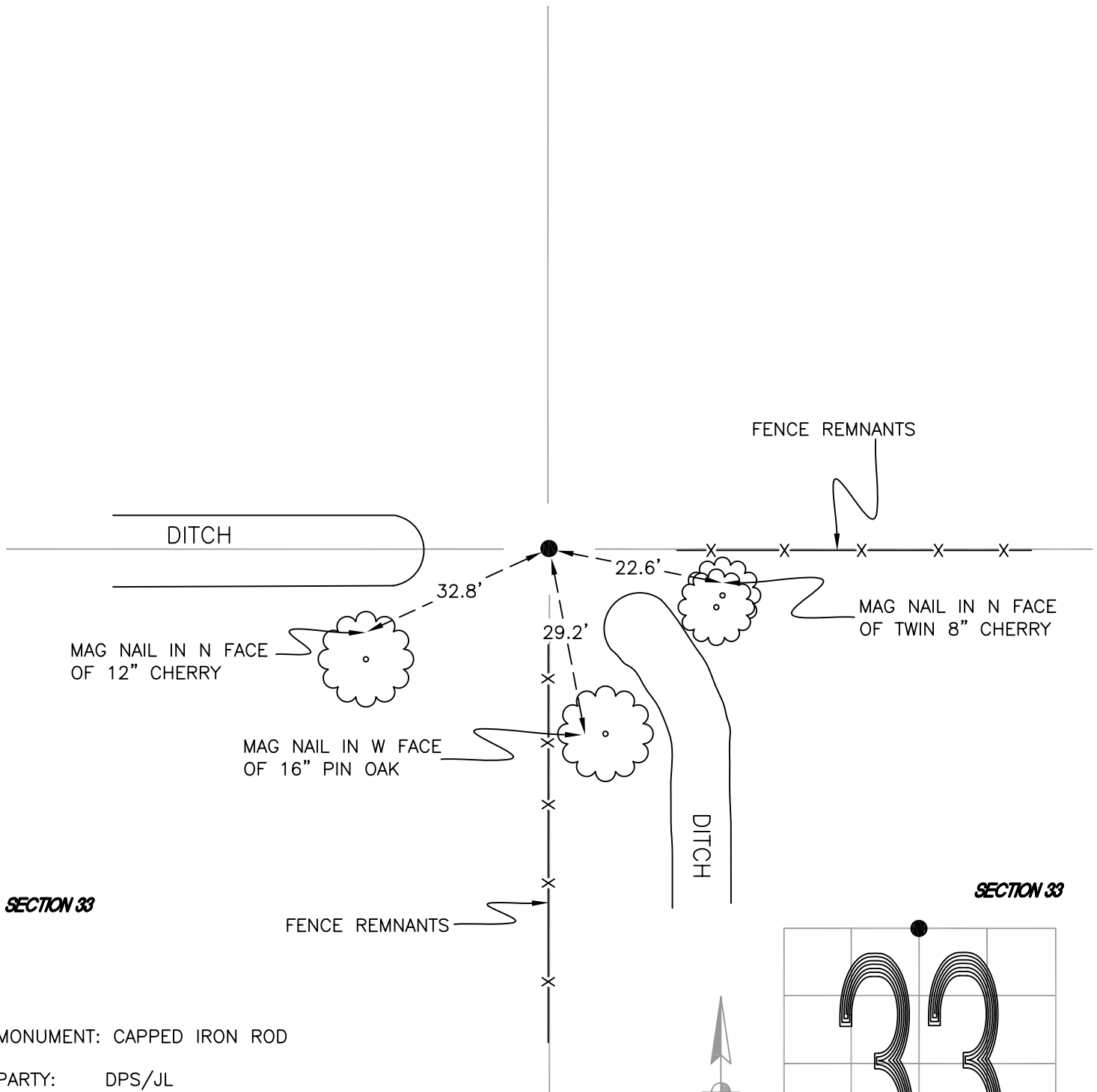
# RAILROAD TOWNSHIP

T 32 N, R 4 W

## V11

SECTION 28

SECTION 28



SECTION 33

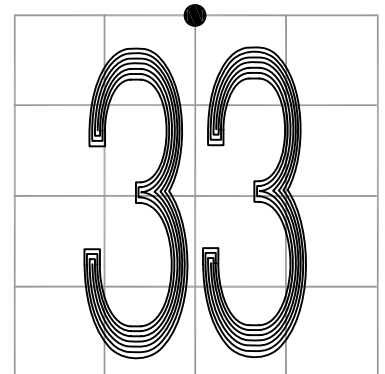
SECTION 33

MONUMENT: CAPPED IRON ROD

PARTY: DPS/JL

DATE: 5/7/15

COMMENTS: SET BY TERRITORIAL ENGINEERING IN 2001;  
DOCUMENT # 2001449872. FOUND BY  
DPS/JL IN 2012.



CORNER LOCATION IN THE SECTION

## V11