

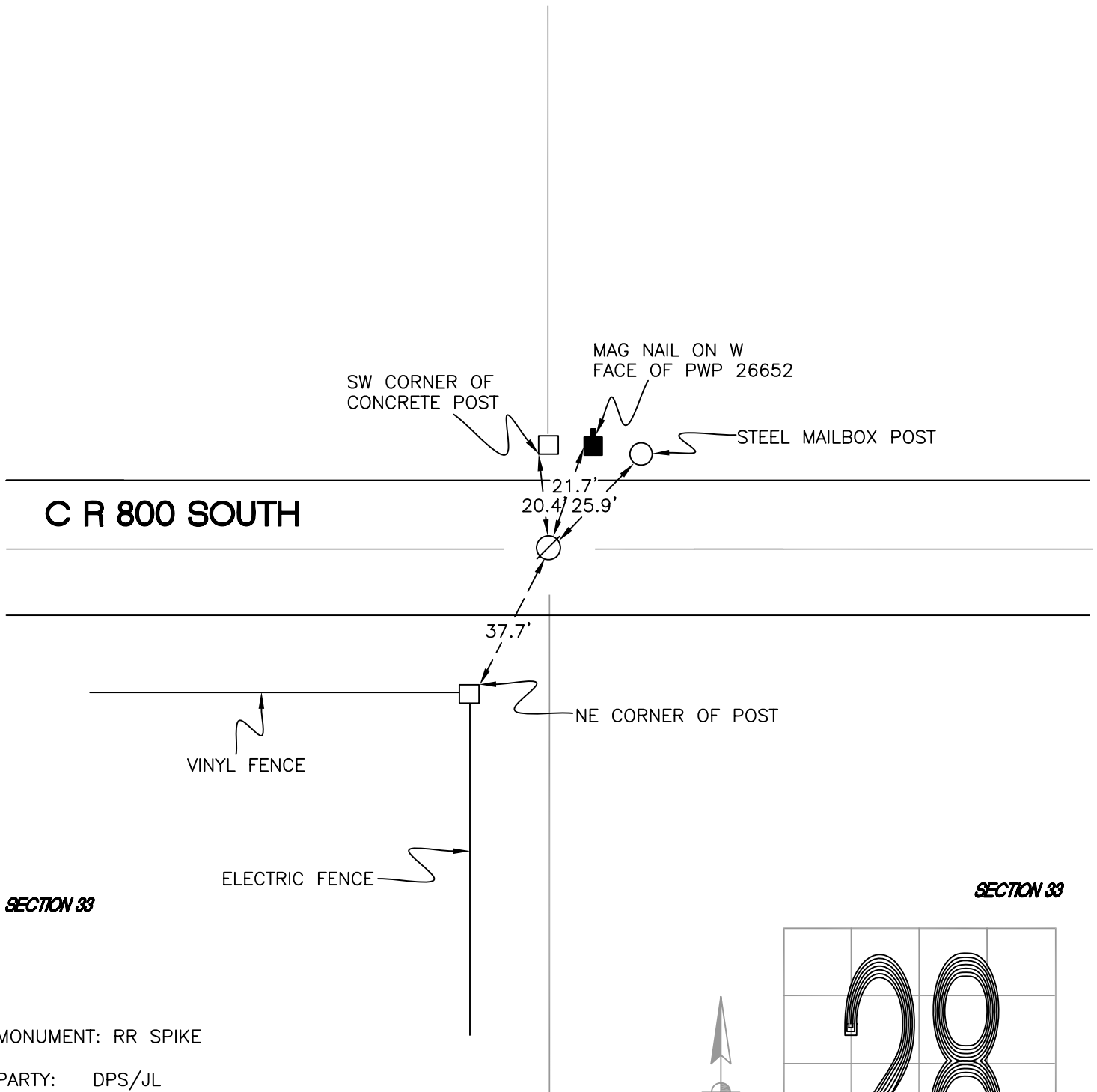
CALIFORNIA TOWNSHIP

T 32 N, R 2 W

V11

SECTION 28

SECTION 28



C R 800 SOUTH

SW CORNER OF
CONCRETE POST

MAG NAIL ON W
FACE OF PWP 26652

STEEL MAILBOX POST

21.7'
20.4' 25.9'

37.7'

NE CORNER OF POST

VINYL FENCE

ELECTRIC FENCE

SECTION 33

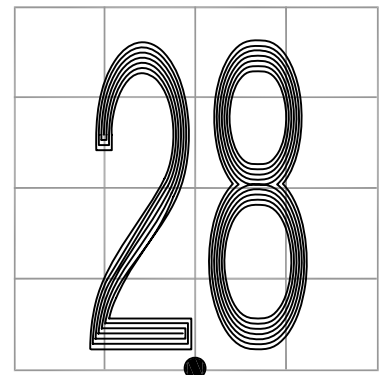
SECTION 33

MONUMENT: RR SPIKE

PARTY: DPS/JL

DATE: 7/15/14

COMMENTS: MONUMENT IS 1" BELOW GRADE. SET BY DAVID LEE ABSHER IN 1988. IT ALIGNS WITH THE FENCE TO THE NORTH AND RIGHT OF WAY SPLIT.



CORNER LOCATION IN THE SECTION

V11