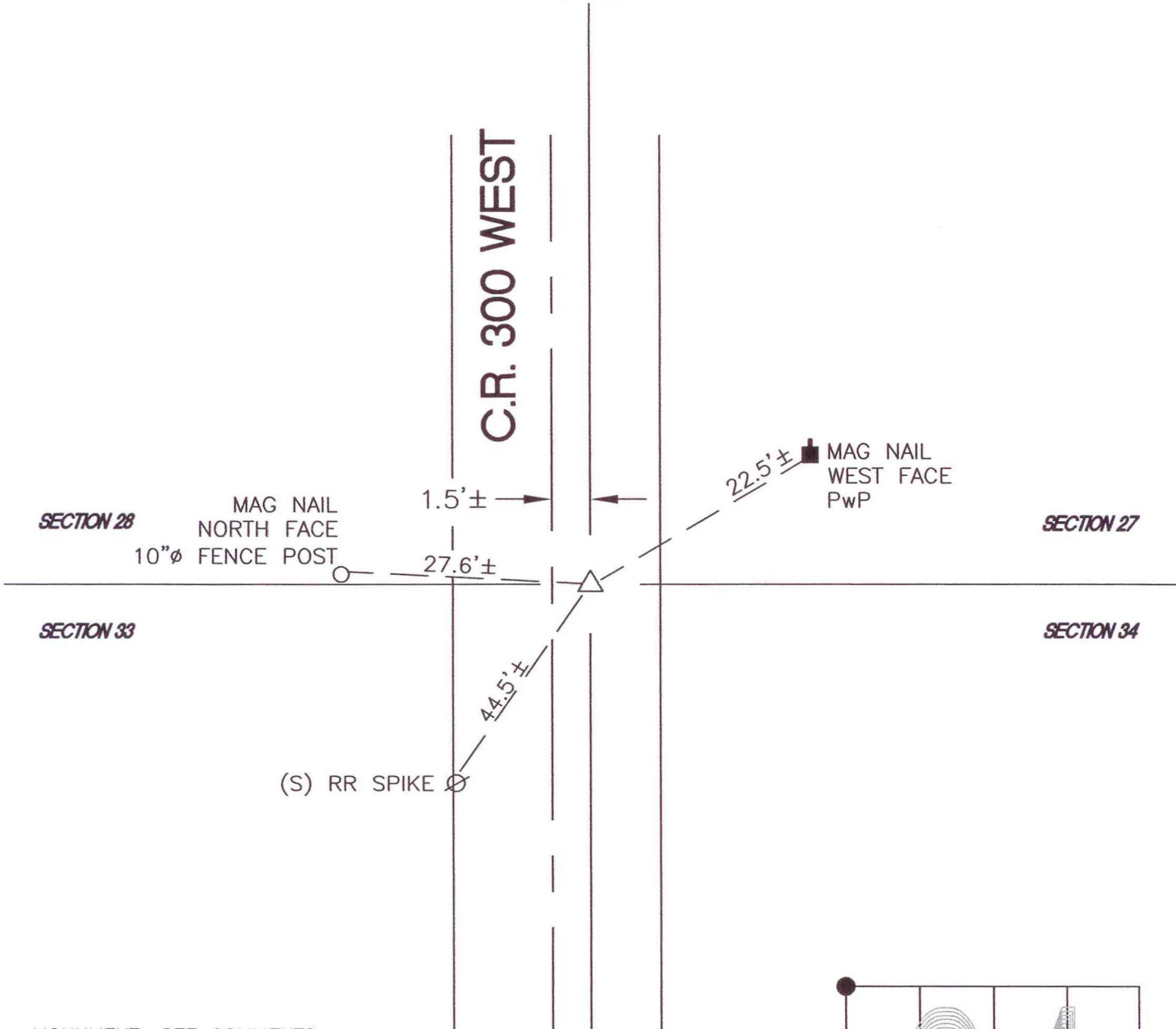


JACKSON TOWNSHIP

T 33 N, R 3 W

V13

C.R. 300 WEST



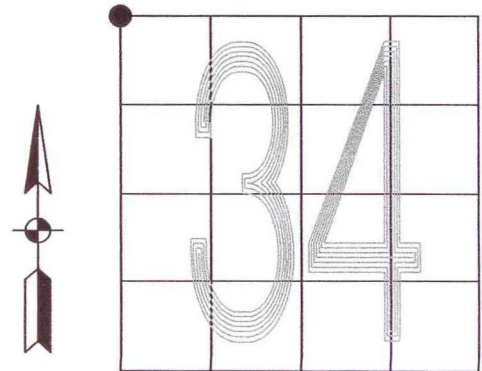
MONUMENT: SEE COMMENTS

CORNER OF: RECORD USE

PARTY: DPS/JL

DATE: 8-22-06

COMMENTS: (F) 1 1/2" IRON PIPE 0.5' BELOW GRADE
1.5' EAST OF CENTERLINE



CORNER LOCATION IN THE SECTION