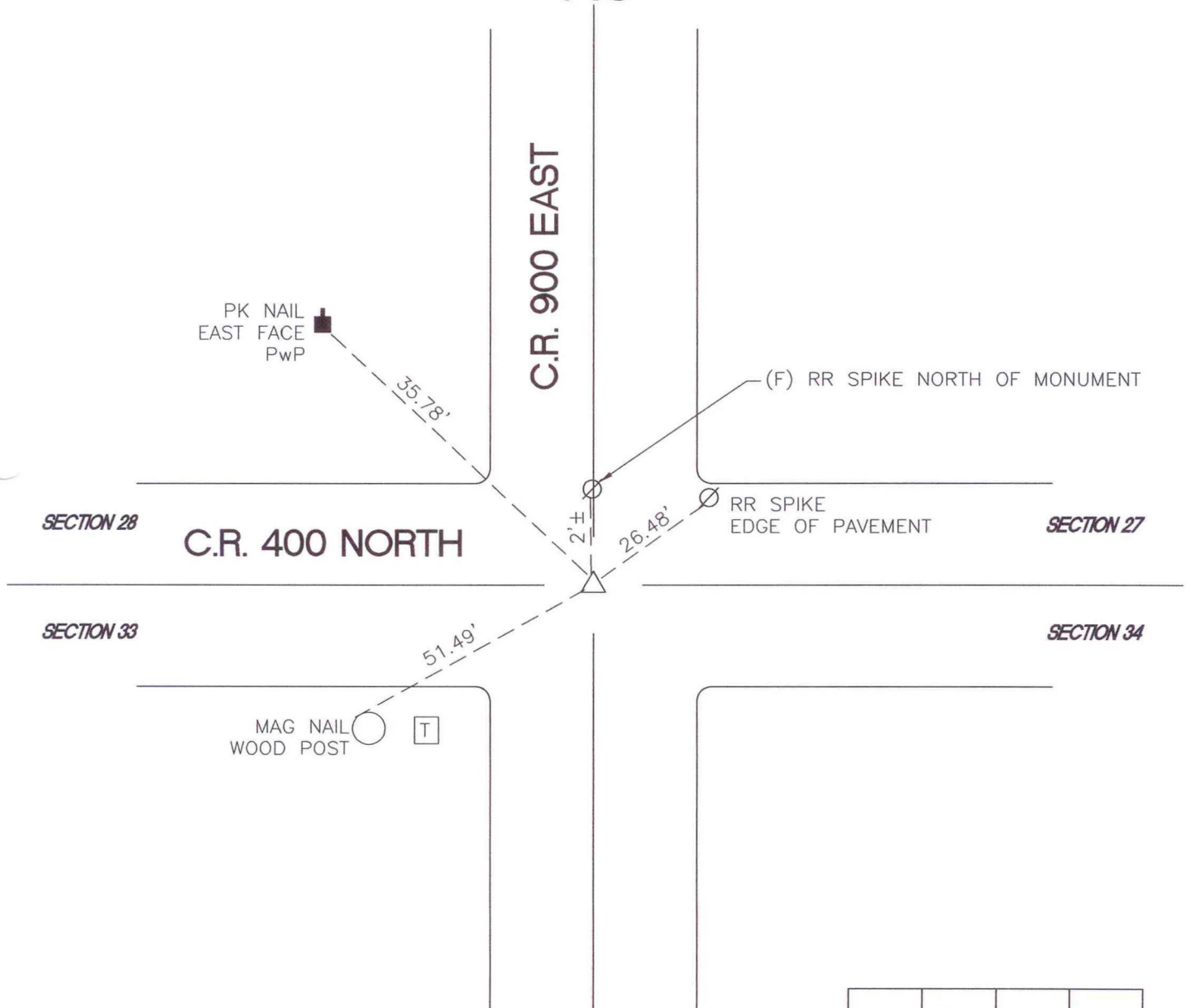


# OREGON TOWNSHIP

T 34 N, R 1 W

## V13



MONUMENT: (F) 5/8" REROD 3" BELOW PAVEMENT

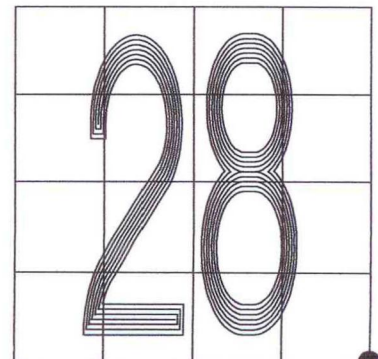
CORNER OF: RECORD  USE

PARTY: VHJ/GR

DATE: 3-18-05

COMMENTS:

HISTORY: RLP, FORMER STARKE COUNTY SURVEYOR  
REPLACED A RR SPIKE WITH REROD ON  
OCTOBER 3, 1984.



CORNER LOCATION IN THE SECTION