

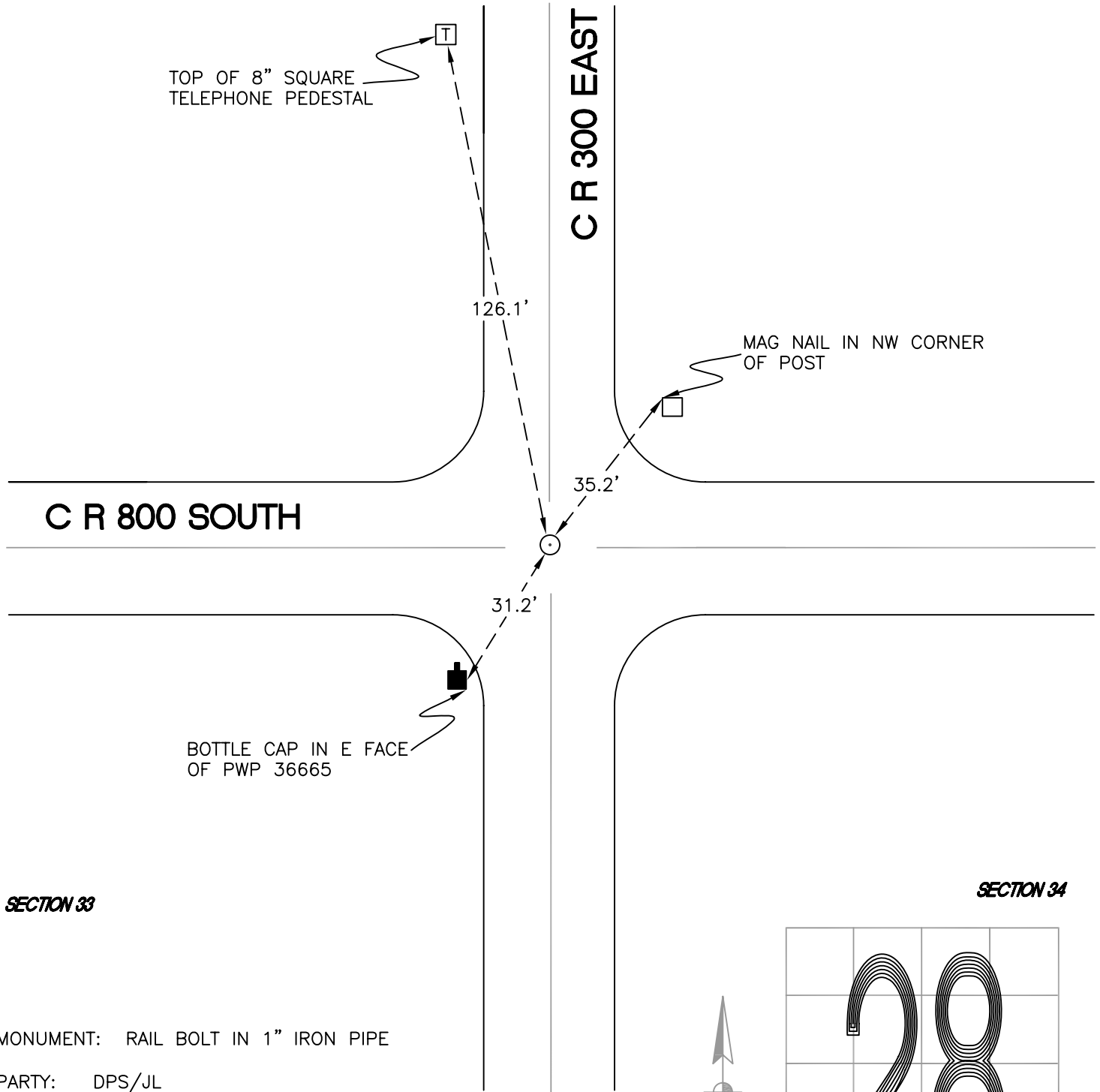
CALIFORNIA TOWNSHIP

T 32 N, R 2 W

V13

SECTION 28

SECTION 27



SECTION 33

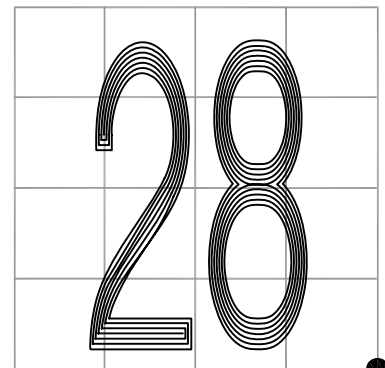
SECTION 34

MONUMENT: RAIL BOLT IN 1" IRON PIPE

PARTY: DPS/JL

DATE: 7/14/14

COMMENTS: FOUND IN 1977.



CORNER LOCATION IN THE SECTION

V13