

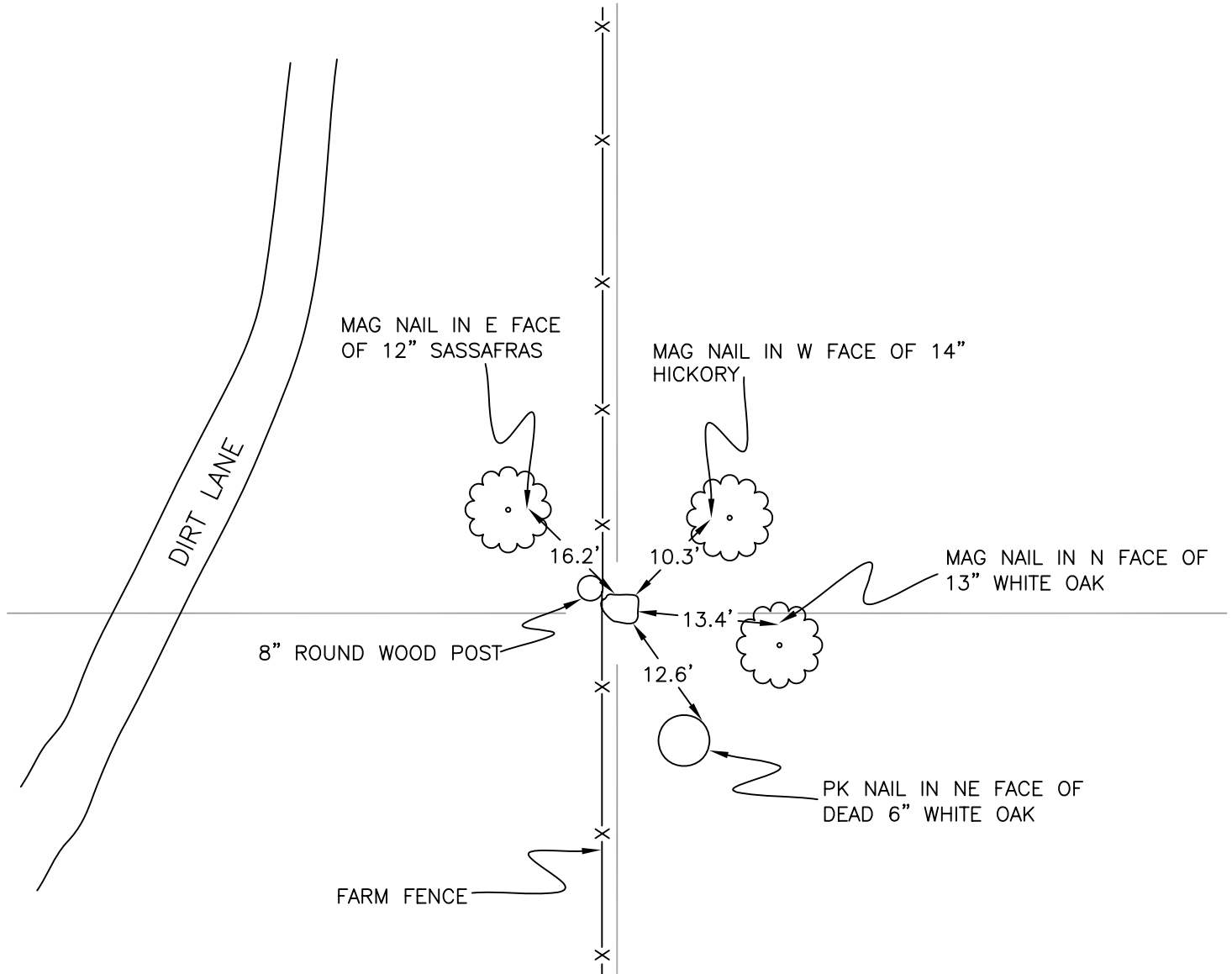
NORTH BEND TOWNSHIP

T 32 N, R 1 W

V15

SECTION 27

SECTION 27



SECTION 34

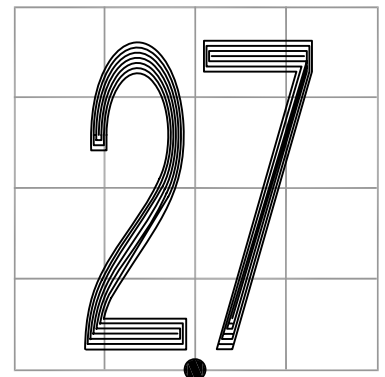
SECTION 34

MONUMENT: STONE POINTING UP

PARTY: JL/AO

DATE: 6/26/12

COMMENTS: 8" POST IS 6" NW OF STONE.
 STONE SET IN 1883. FOUND IN 1926 BY PAUL AND IN 1995 BY WIGHTMAN-CRAMER.



CORNER LOCATION IN THE SECTION

V15