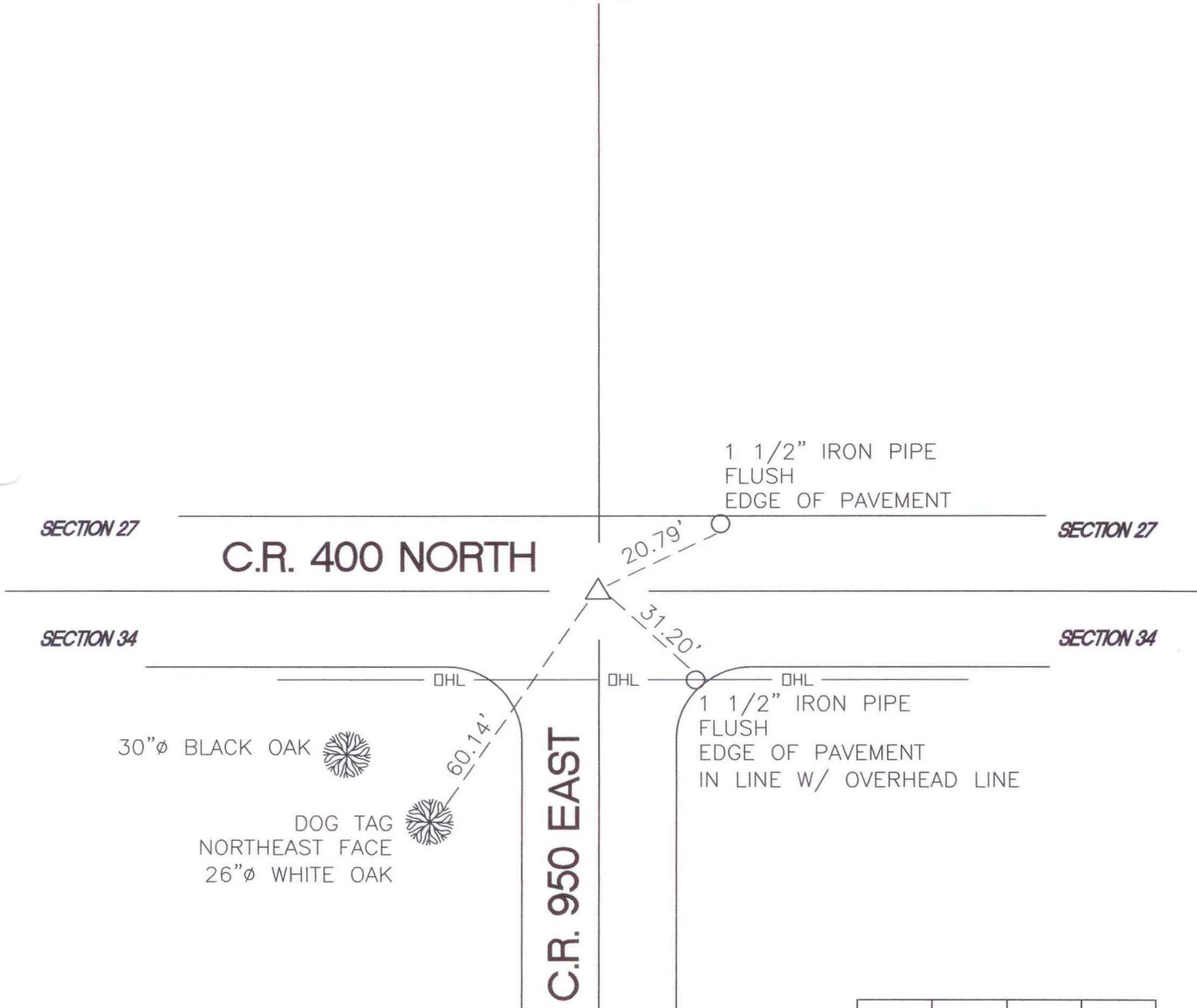


# OREGON TOWNSHIP

## T 34 N, R 1 W

### V15



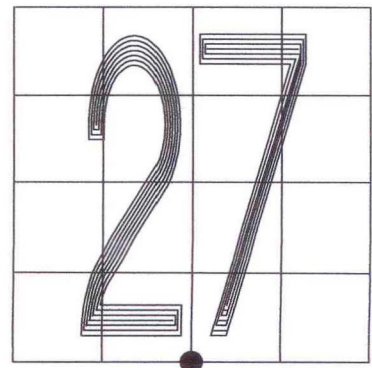
MONUMENT: (F) 3/4" REROD 1" BELOW PAVEMENT

CORNER OF: RECORD  USE

PARTY: VHJ / GR

DATE: 3-18-05

COMMENTS:  
 HISTORY: VHJ OF TERRITORIAL ENGR  
 SET 3/4" IRON PIN X 36" LONG IN 1987.



CORNER LOCATION IN THE SECTION