

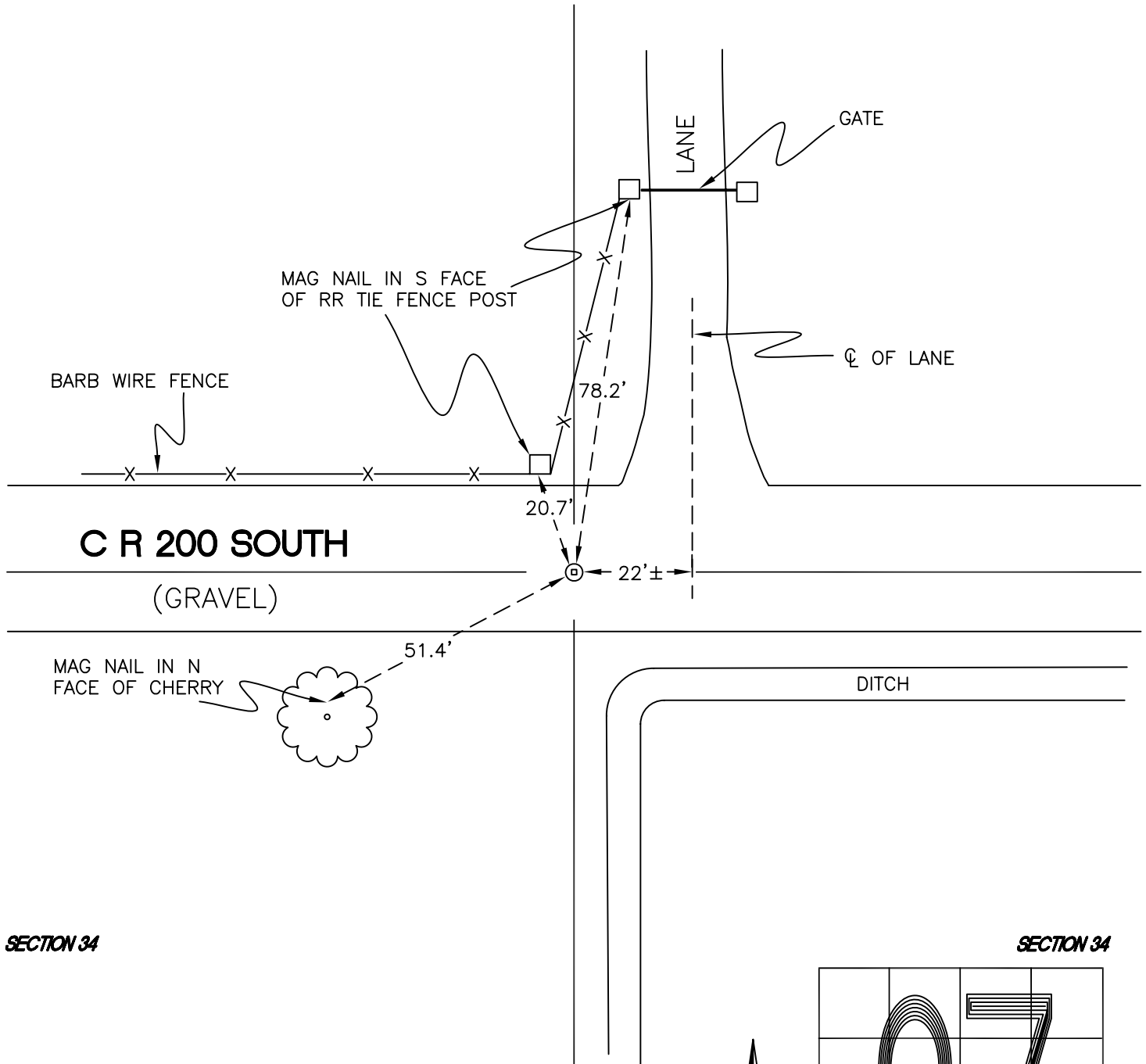
WASHINGTON TOWNSHIP

T 33 N, R 1 W

V15

SECTION 27

SECTION 27



SECTION 34

SECTION 34

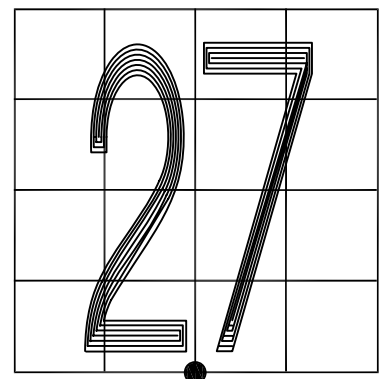
MONUMENT: RAILROAD CROSSING BOLT

CORNER OF: RECORD USE

PARTY: JL/PM

DATE: 7-3-2008

COMMENTS: 2" BELOW GRADE; 3' S OF ϕ OF 200S
MONUMENT USED IN SURVEYS BY WIGHTMAN-CRAMER
IN 1998, GRAND KANKAKEE IN 2003, AND TERRITORIAL
ENGINEERING IN 2007.



CORNER LOCATION IN THE SECTION

V15