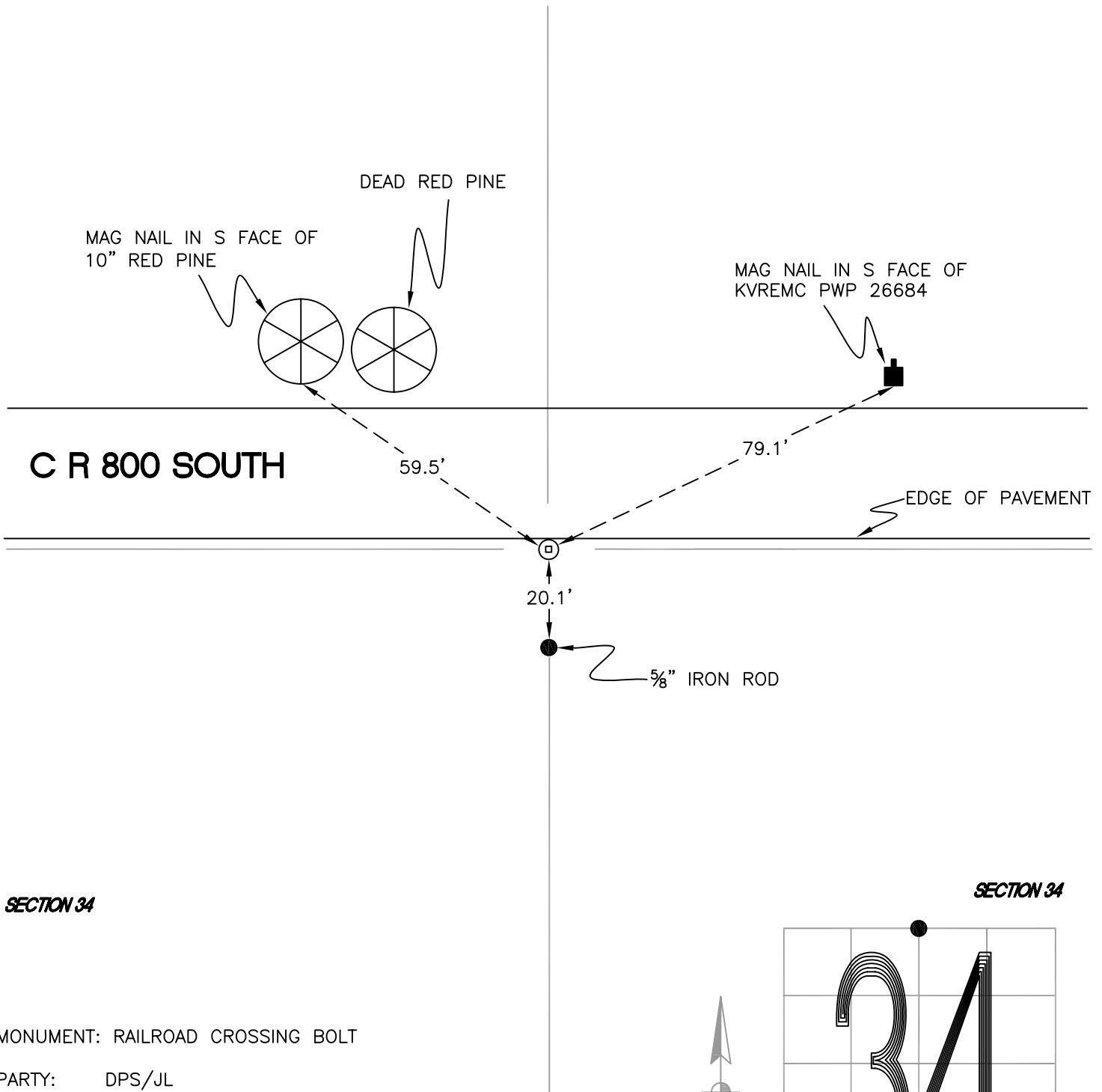


# CALIFORNIA TOWNSHIP

T 32 N, R 2 W  
**V15**

SECTION 27

SECTION 27



SECTION 34

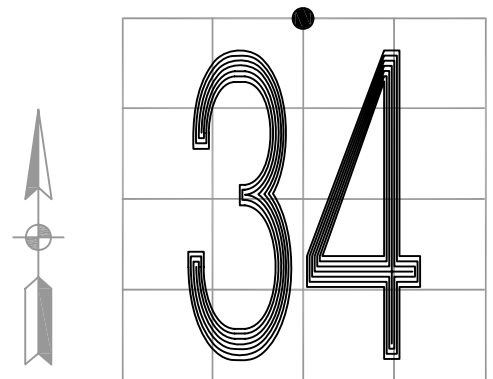
SECTION 34

MONUMENT: RAILROAD CROSSING BOLT

PARTY: DPS/JL

DATE: 7/14/14

COMMENTS: SET BY TERRITORIAL ENGINEERING in 2012;  
DOCUMENT # 2012003710.



**V15**