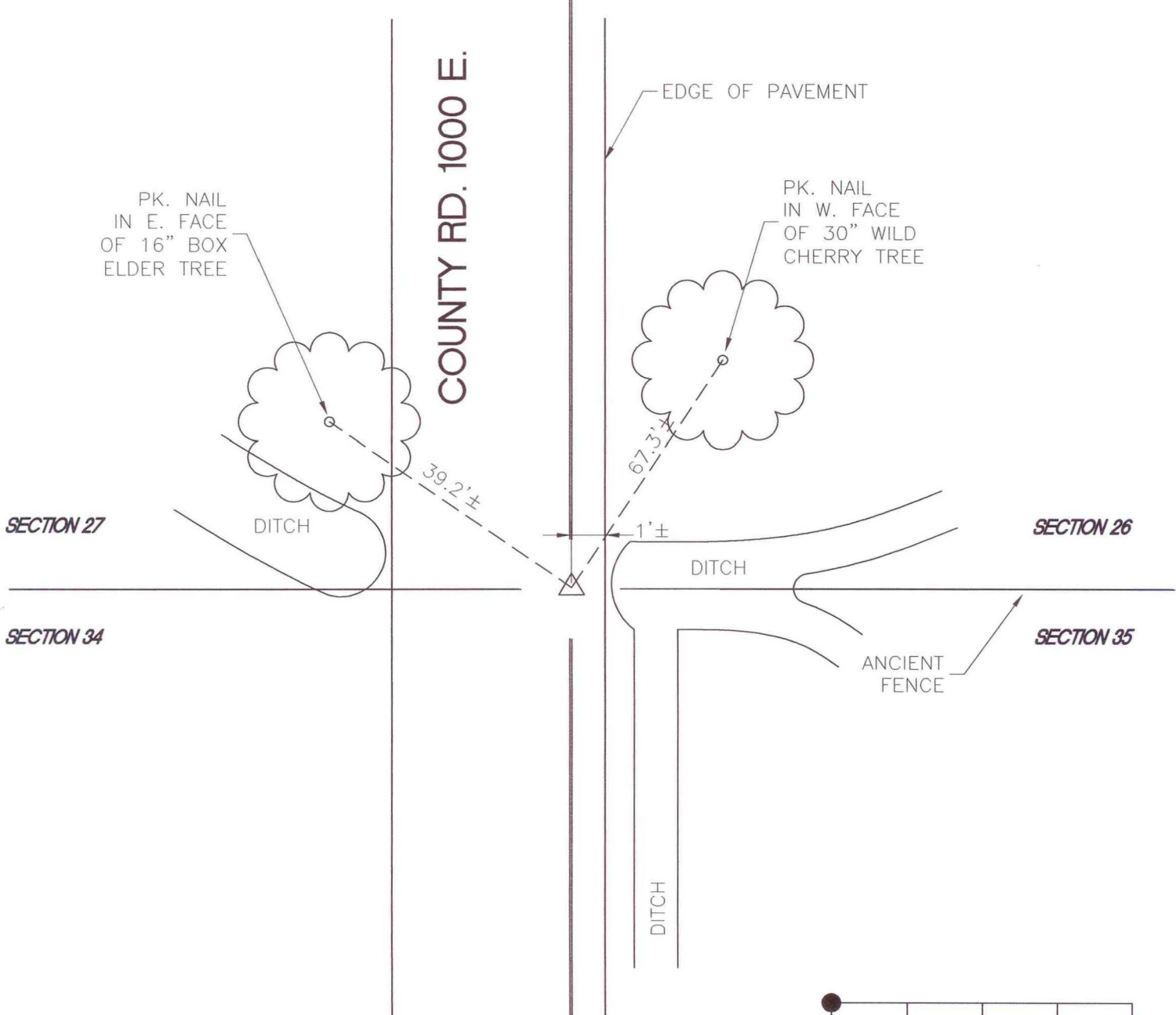


# NORTH BEND TOWNSHIP

T 32 N, R 3 W

## V17

COUNTY RD. 1000 E.



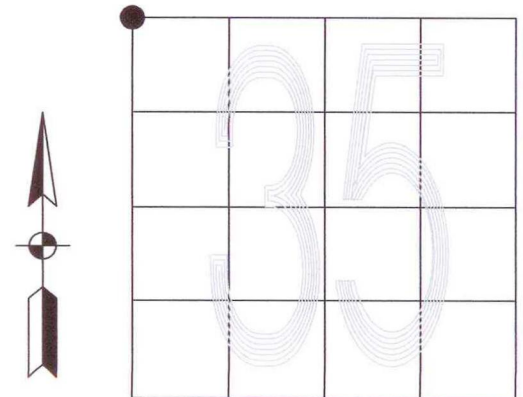
MONUMENT: (S) I.R. W/ CAP #S0411

CORNER OF: RECORD  USE

PARTY: DPS, JMH

DATE: 10-23-02

COMMENTS: NONE



CORNER LOCATION IN THE SECTION