

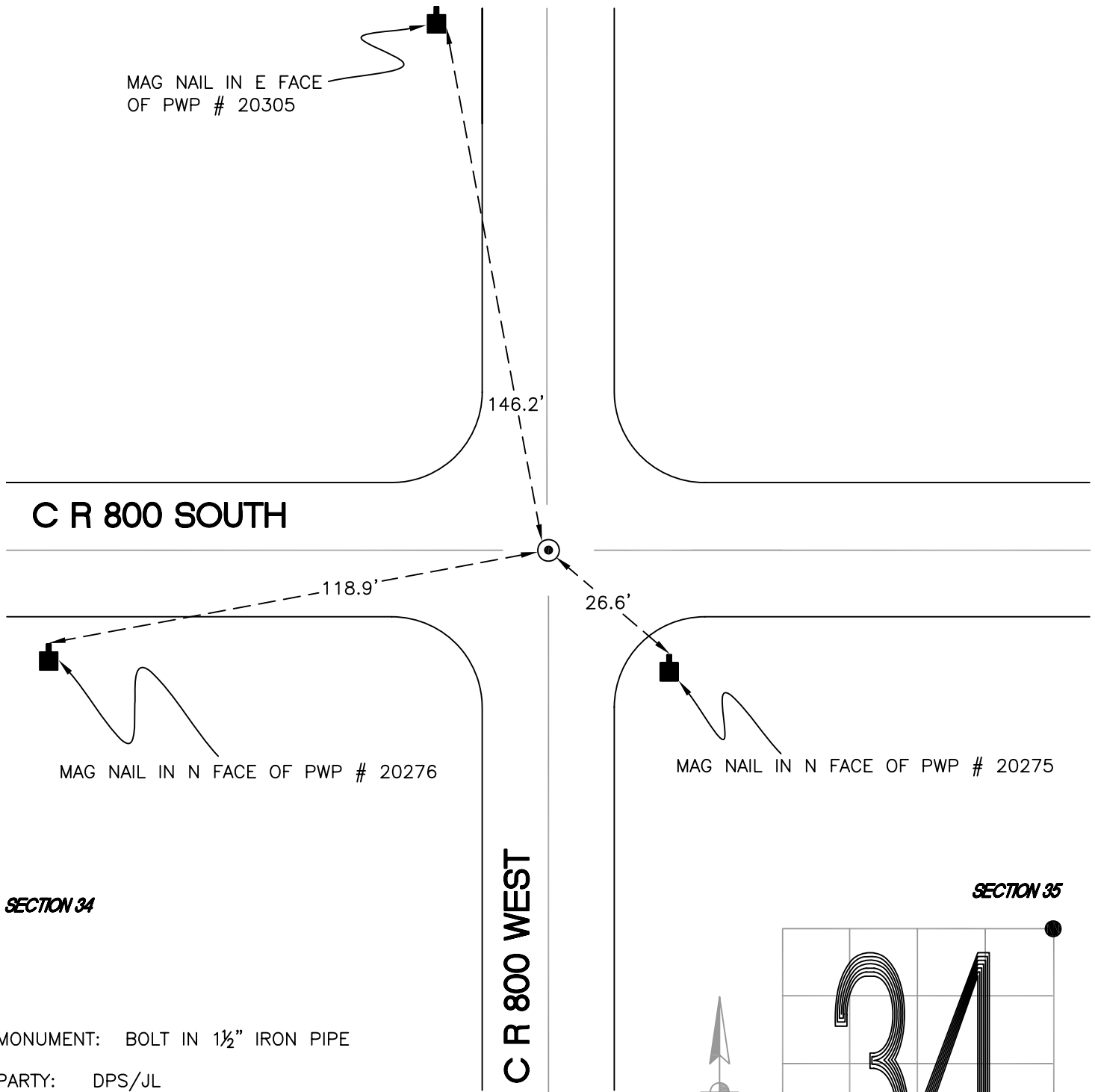
RAILROAD TOWNSHIP

T 32 N, R 4 W

V17

SECTION 27

SECTION 26



MAG NAIL IN E FACE OF PWP # 20305

C R 800 SOUTH

MAG NAIL IN N FACE OF PWP # 20276

MAG NAIL IN N FACE OF PWP # 20275

SECTION 34

SECTION 35

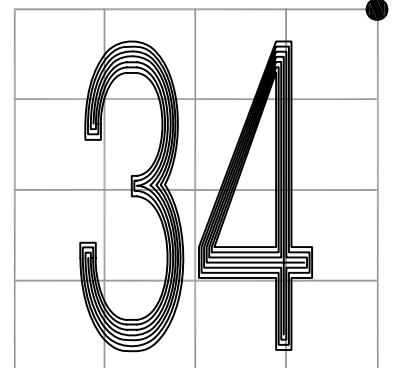
MONUMENT: BOLT IN 1½" IRON PIPE

PARTY: DPS/JL

DATE: 5/7/2015

COMMENTS: FOUND BY CETA IN 1978, REH IN 1982, AND DWC IN 1994.

C R 800 WEST



CORNER LOCATION IN THE SECTION

V17