

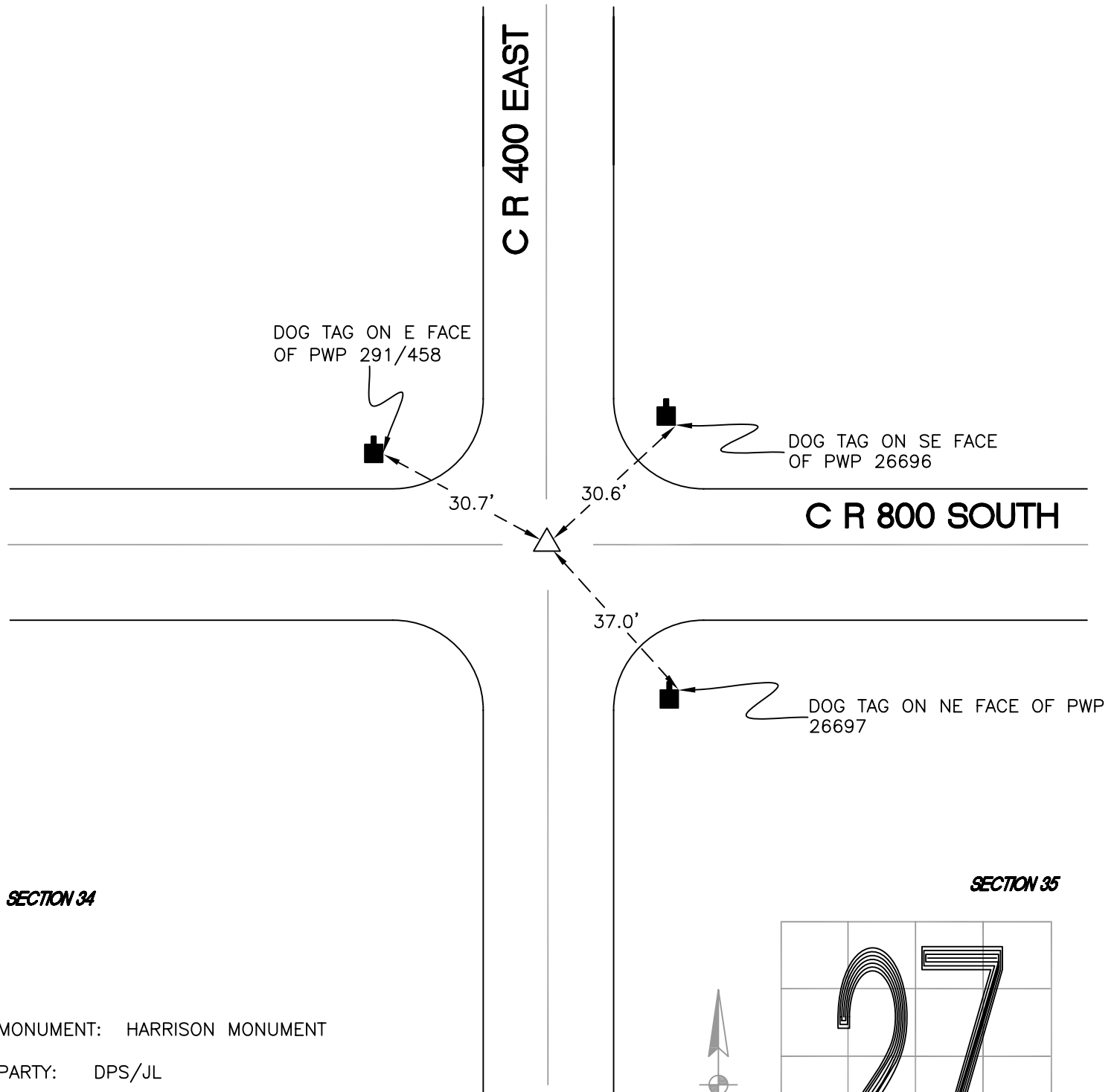
CALIFORNIA TOWNSHIP

T 32 N, R 2 W

V17

SECTION 27

SECTION 26



SECTION 34

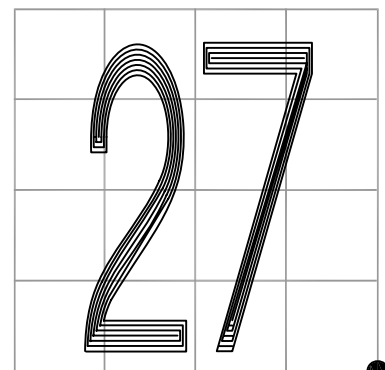
SECTION 35

MONUMENT: HARRISON MONUMENT

PARTY: DPS/JL

DATE: 7/14/14

COMMENTS: MONUMENT IS 9" BELOW GRADE AND 1' N OF 800 S. OLD POST FOUND IN 1977 AND REPLACED BY HARRISON MONUMENT.



CORNER LOCATION IN THE SECTION

V17