

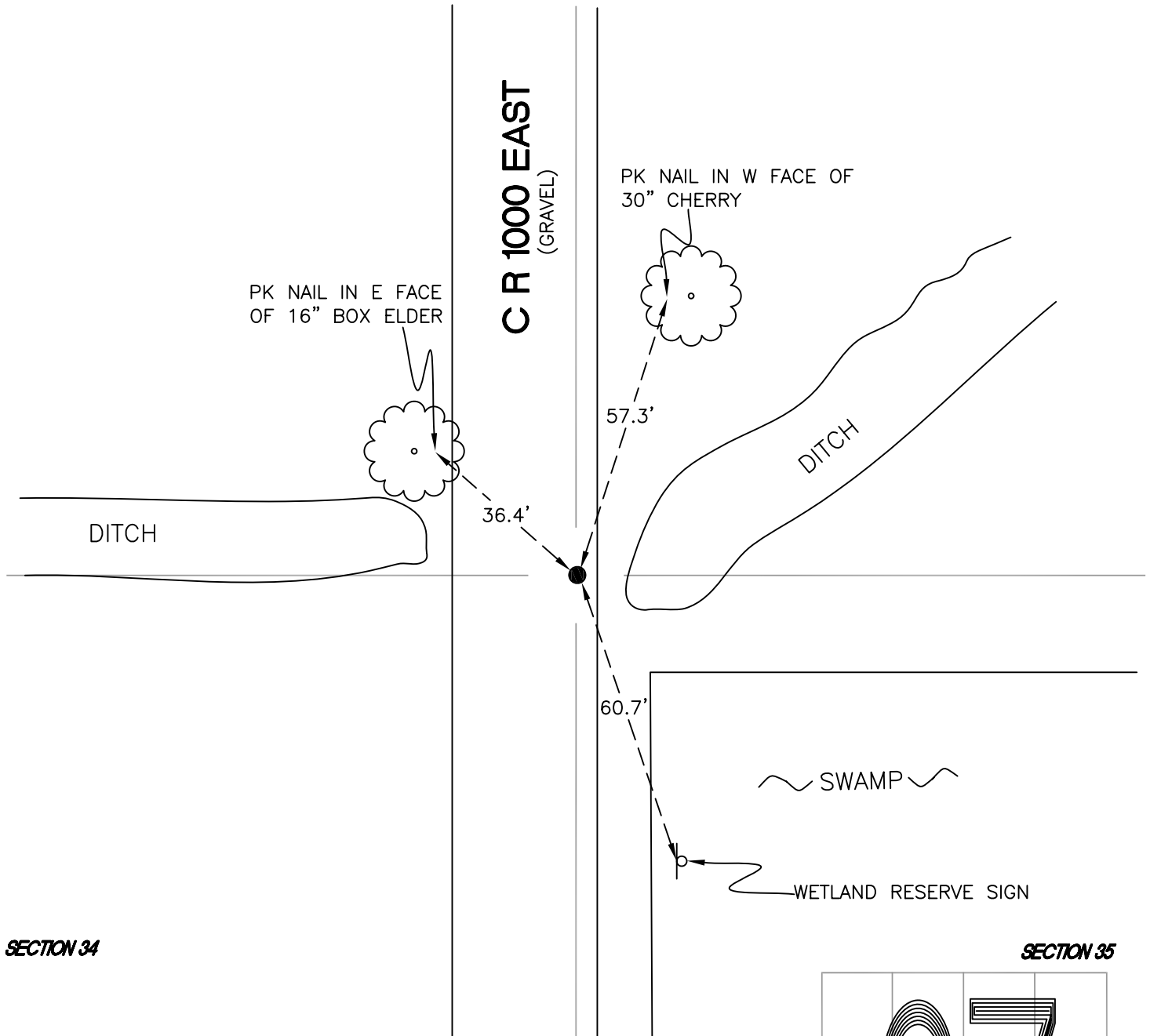
# NORTH BEND TOWNSHIP

T 32 N, R 1 W

## V17

SECTION 27

SECTION 26



SECTION 34

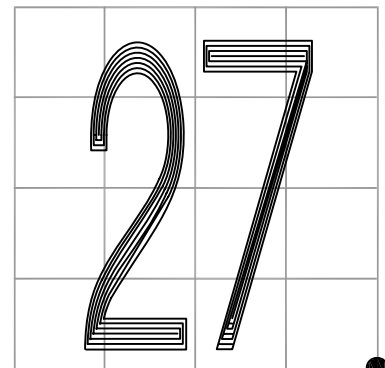
SECTION 35

MONUMENT: 5/8" IRON ROD

PARTY: JL/AO

DATE: 6/18/12

COMMENTS: 3" BELOW GRADE; ON EAST EDGE GRAVEL; 5'± S OF  $\text{C}$  OF W DITCH. SET BY TERRITORIAL ENGINEERING IN 2002.



CORNER LOCATION IN THE SECTION

## V17