

DAVIS TOWNSHIP

T 34 N, R 2 W

V19

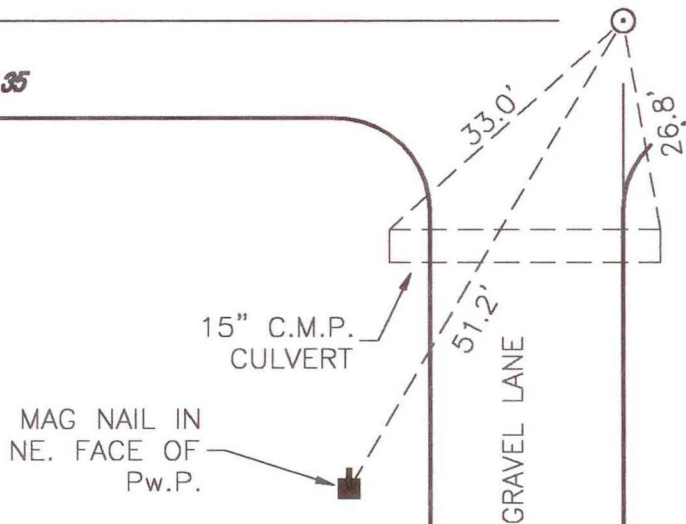
SECTION 26

COUNTY RD. 400 N.

SECTION 26

SECTION 35

SECTION 35



15" C.M.P. CULVERT

MAG NAIL IN NE. FACE OF Pw.P.

GRAVEL LANE

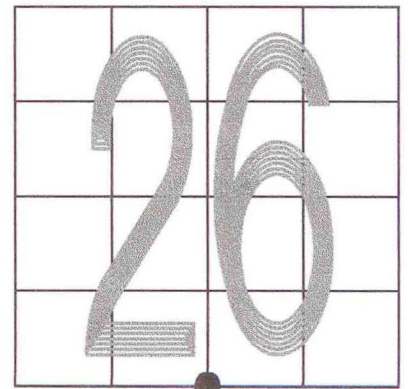
MONUMENT: RAILROAD CROSSING BOLT

CORNER OF: RECORD USE

PARTY: DPS/RSA

DATE: 1-10-2002

COMMENTS: MONUMENT IN LINE WITH EAST SIDE OF GRAVEL LANE



CORNER LOCATION IN THE SECTION