

NORTH BEND TOWNSHIP

T 32 N, R 1 W

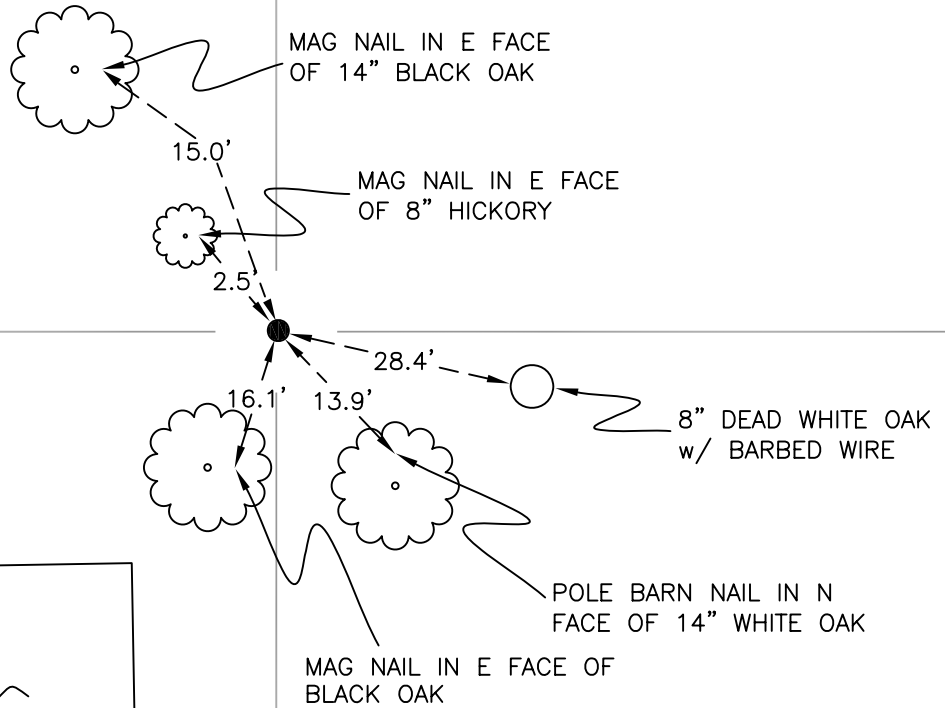
V19

SECTION 26

SECTION 26

WOODS

WOODS



SWAMP

SECTION 35

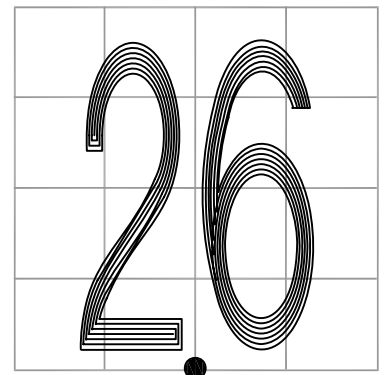
SECTION 35

MONUMENT: 3/4" IRON ROD

PARTY: JL/AO

DATE: 6/13/12

COMMENTS: WETLAND RESERVE SIGN 4" SW OF MONUMENT. FOUND IN 1986 BY VHJ.



CORNER LOCATION IN THE SECTION

V19