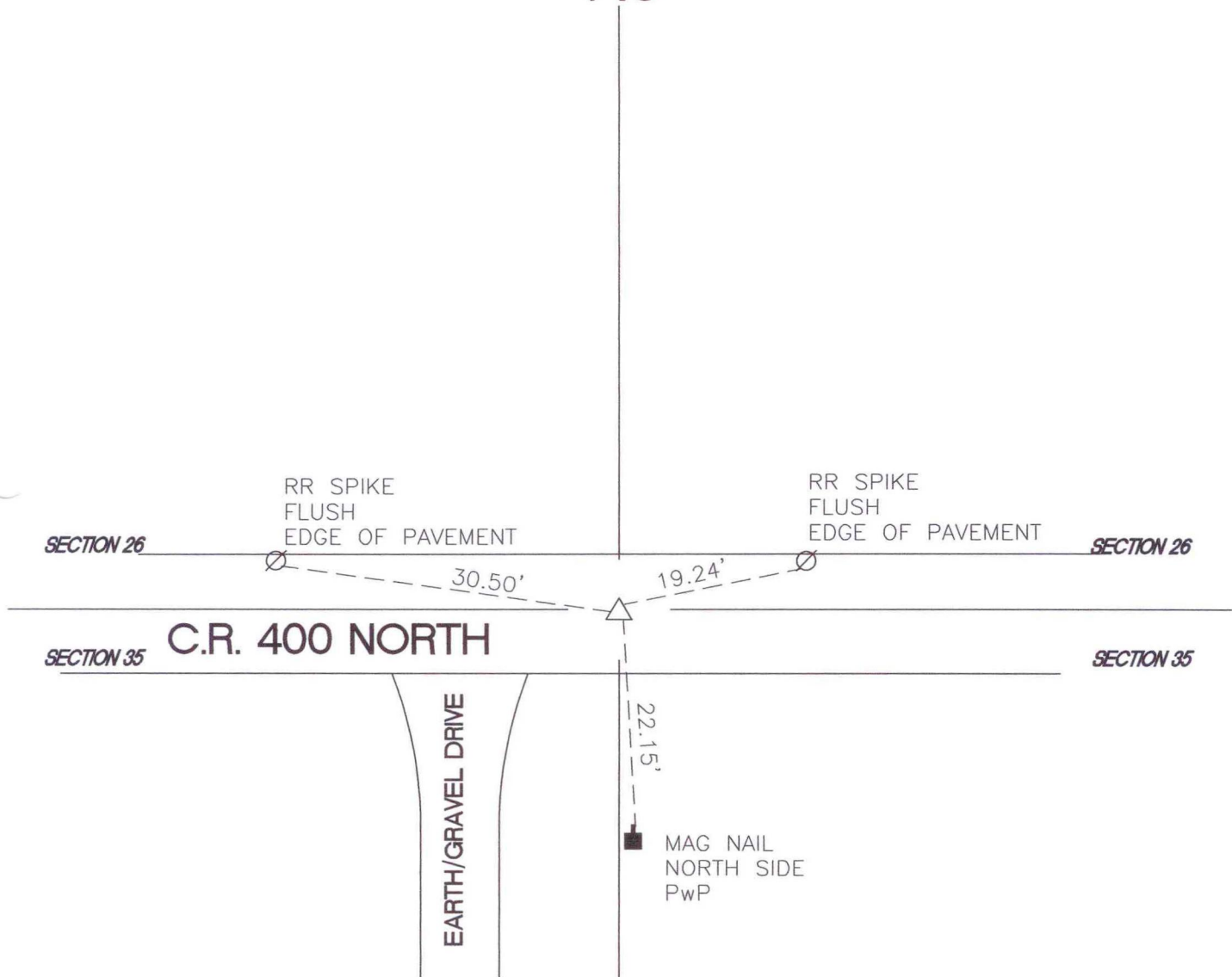


# OREGON TOWNSHIP

T 34 N, R 1 W

## V19



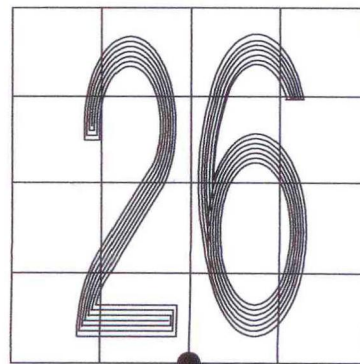
MONUMENT: (F) 2" CAST IRON PIPE 1" BELOW PAVEMENT

CORNER OF: RECORD  USE

PARTY: VHJ / GR

DATE: 3-17-05

COMMENTS:  
HISTORY: RLP/AW SET 2" CAST IRON PIPE  
ON JULY 13, 1984.



CORNER LOCATION IN THE SECTION