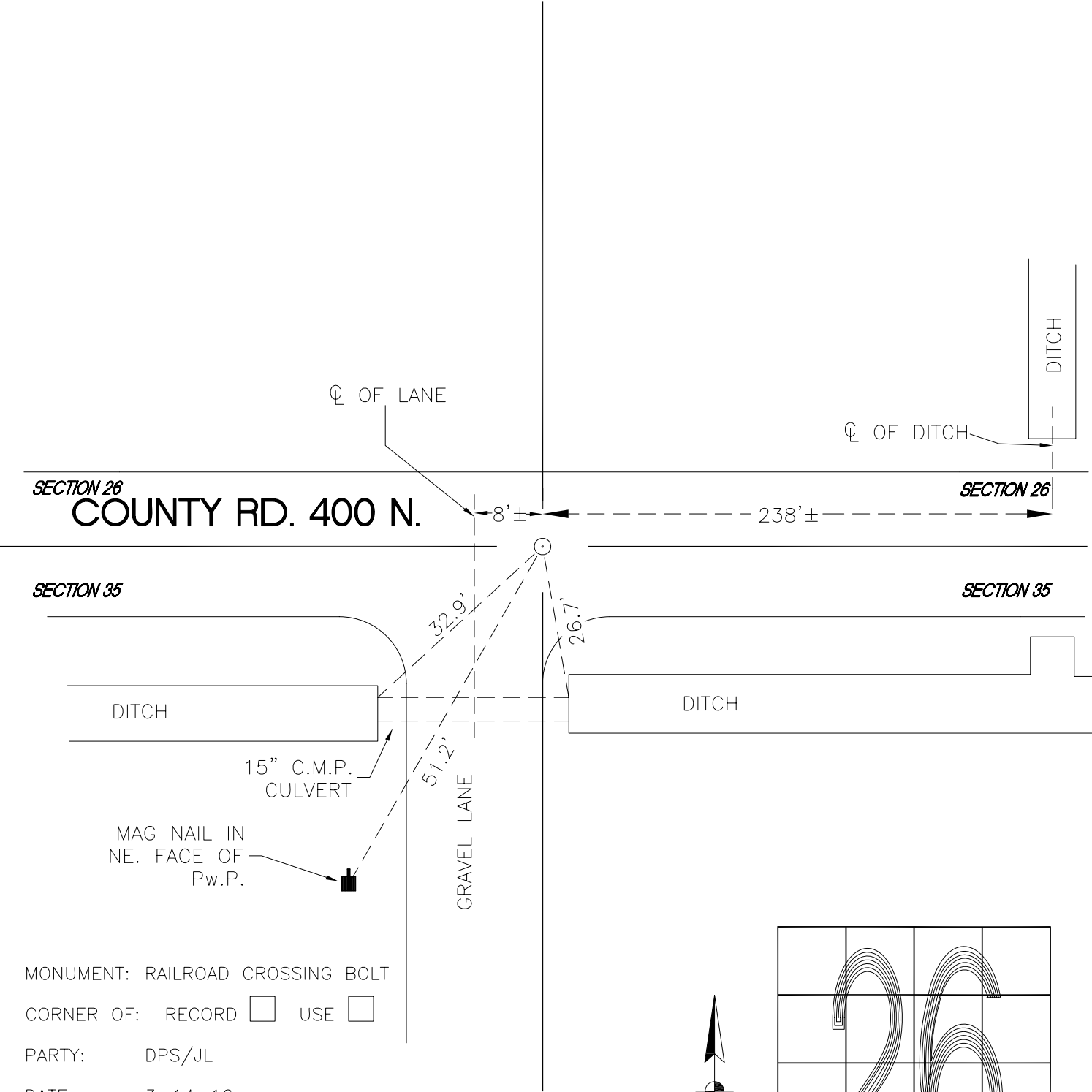


DAVIS TOWNSHIP

T 34 N, R 2 W

V19



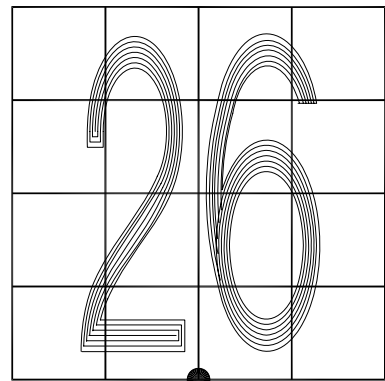
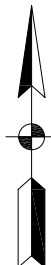
MONUMENT: RAILROAD CROSSING BOLT

CORNER OF: RECORD USE

PARTY: DPS/JL

DATE: 3-14-16

COMMENTS: MONUMENT IN LINE WITH EAST SIDE OF GRAVEL LANE. FOUND BY DPS/RSA IN 2002. 3' N OF C/L OF 400N.



V19

CORNER LOCATION IN THE SECTION