

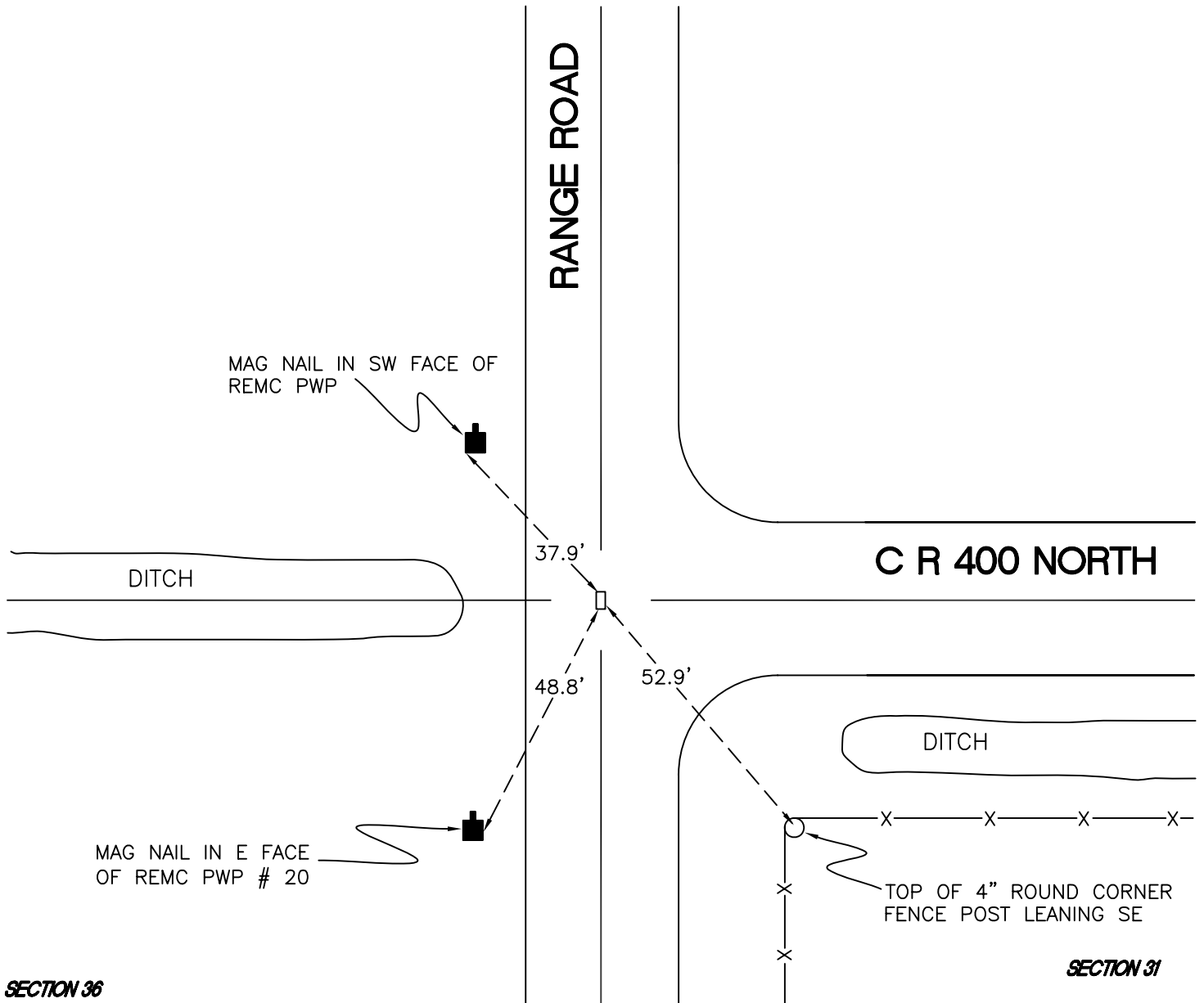
DAVIS TOWNSHIP

T 34 N, R 2 W

V1

SECTION 25

SECTION 30



MAG NAIL IN SW FACE OF
REMC PWP

DITCH

37.9'

48.8'

52.9'

C R 400 NORTH

DITCH

MAG NAIL IN E FACE
OF REMC PWP # 20

TOP OF 4" ROUND CORNER
FENCE POST LEANING SE

SECTION 36

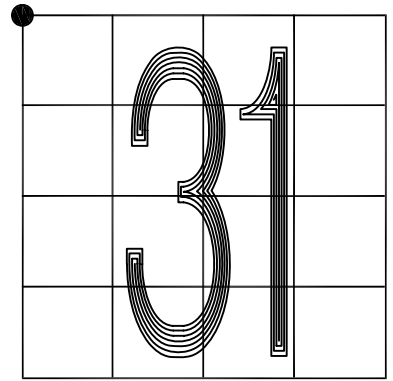
SECTION 31

MONUMENT: 1" X 1/2" IRON BAR

PARTY: DPS/JL

DATE: APRIL, 2016

COMMENTS: 1 1/2" PINCH PIPE ADJACENT TO THE NE.
0.4' BELOW GRADE. FOUND IN 2010
BY DPS/MSL.



CORNER LOCATION IN THE SECTION

V1