

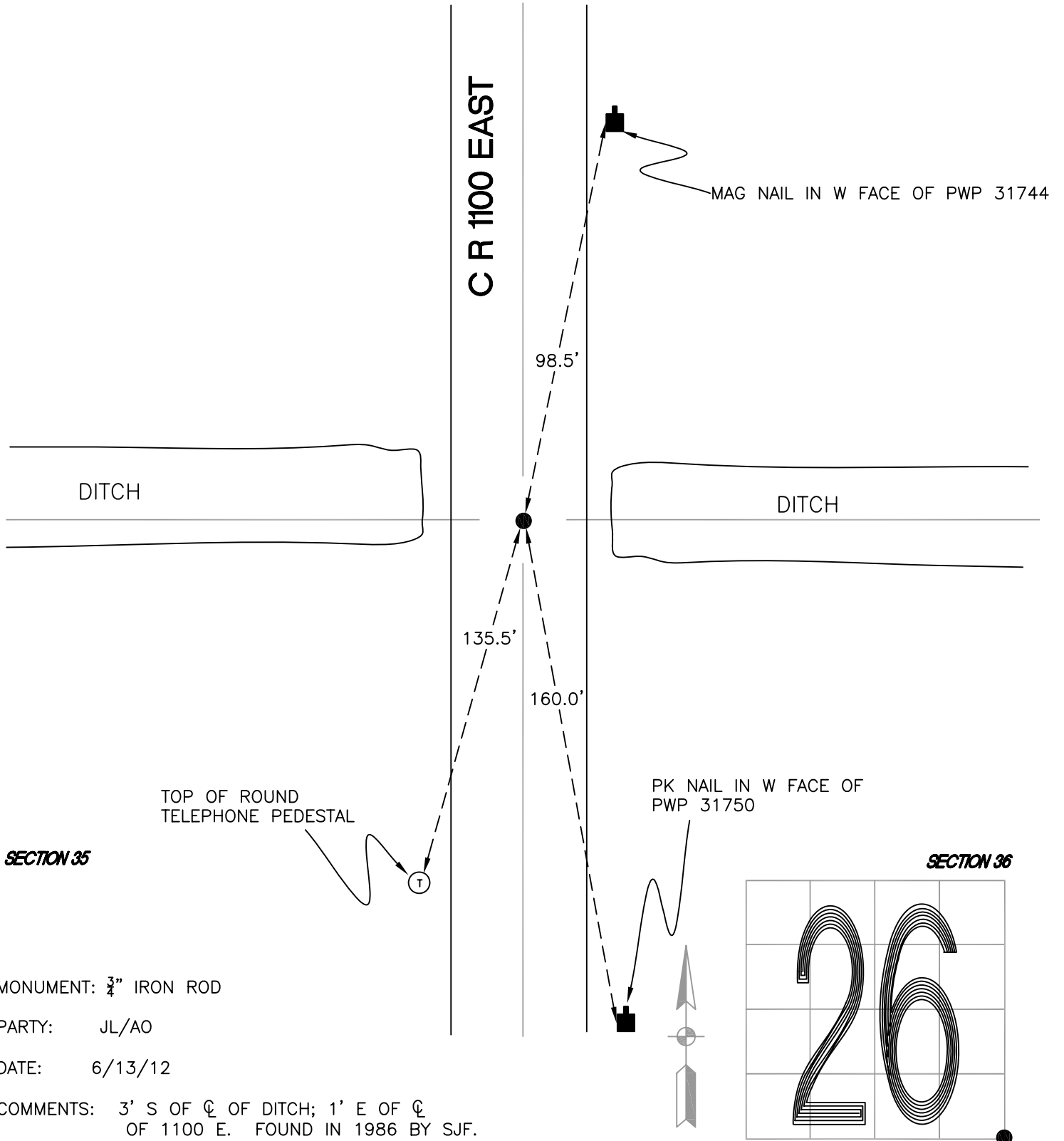
NORTH BEND TOWNSHIP

T 32 N, R 1 W

V21

SECTION 26

SECTION 25



MONUMENT: 3/4" IRON ROD

PARTY: JL/AO

DATE: 6/13/12

COMMENTS: 3' S OF ϕ OF DITCH; 1' E OF ϕ OF 1100 E. FOUND IN 1986 BY SJF.

CORNER LOCATION IN THE SECTION

V21