

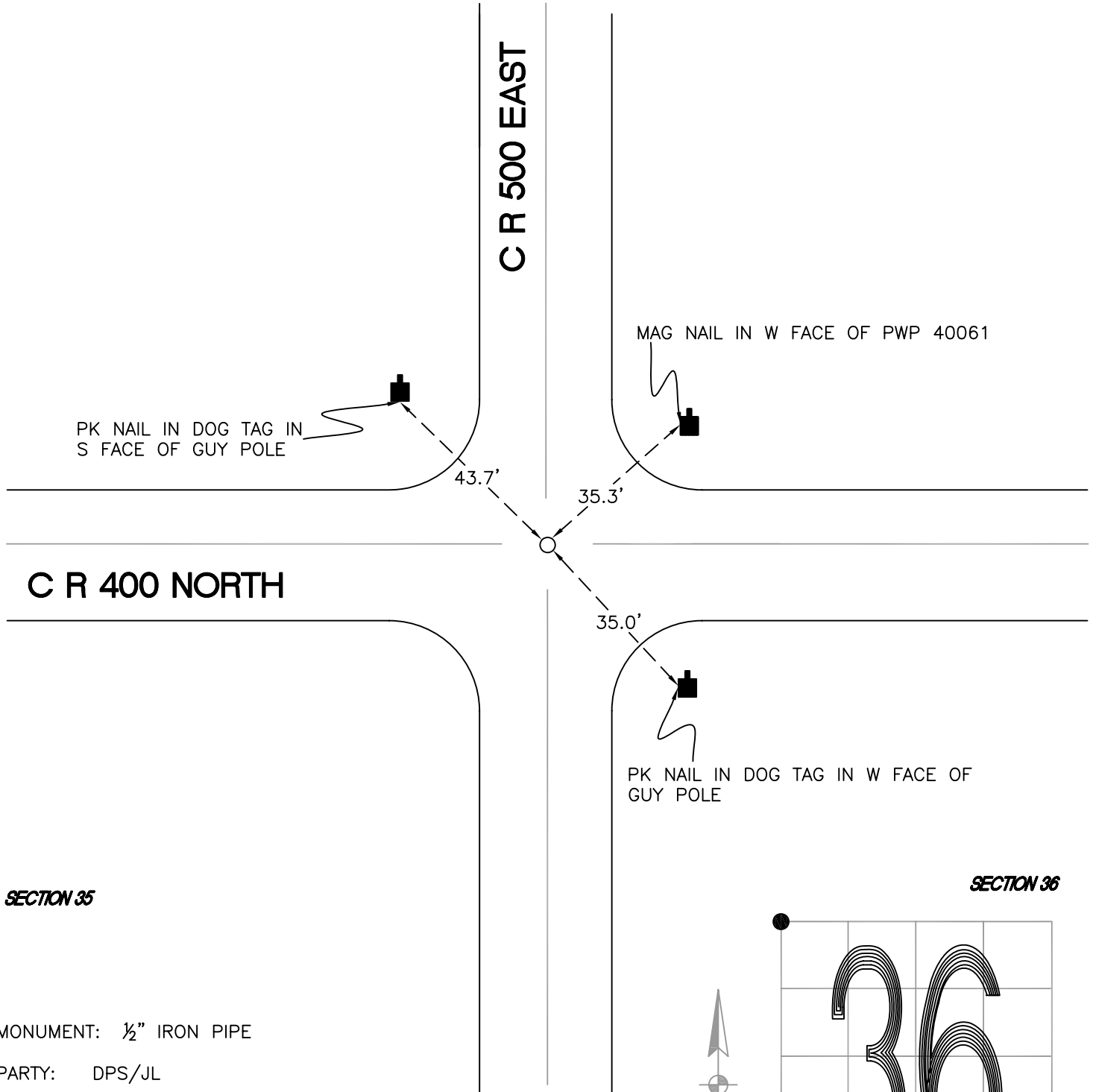
DAVIS TOWNSHIP

T 34 N, R 2 W

V21

SECTION 26

SECTION 25



SECTION 35

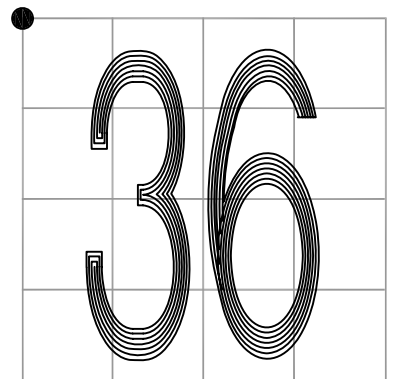
SECTION 36

MONUMENT: 1/2" IRON PIPE

PARTY: DPS/JL

DATE: 3-14-16

COMMENTS: 0.4' BELOW GRADE, 1' N OF 400 N.
FOUND IN 1982 BY RP.



CORNER LOCATION IN THE SECTION

V21