

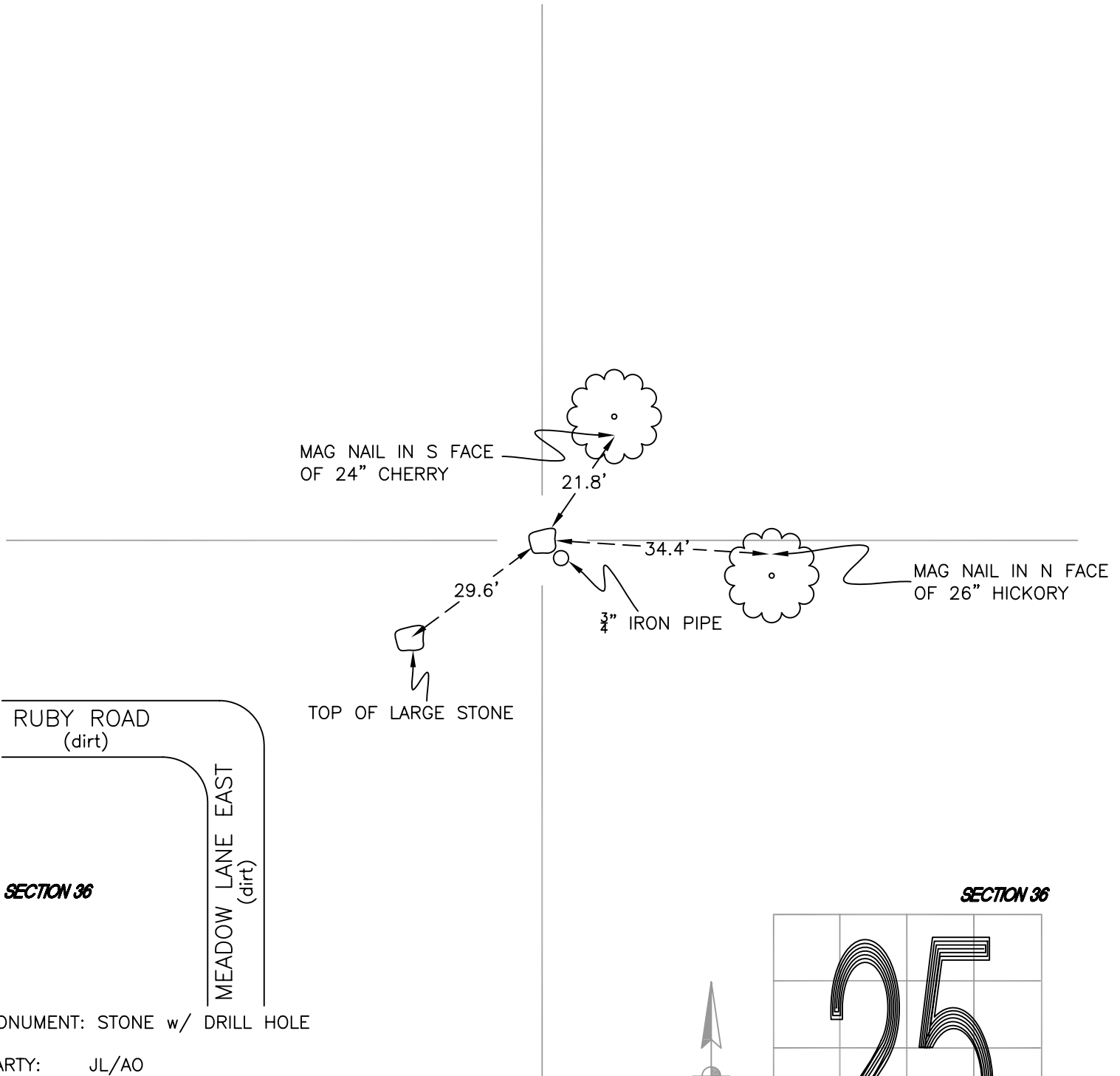
NORTH BEND TOWNSHIP

T 32 N, R 1 W

V23

SECTION 25

SECTION 25



SECTION 36

SECTION 36

MONUMENT: STONE w/ DRILL HOLE

PARTY: JL/AO

DATE: 6/18/12

COMMENTS: WETLAND RESERVE SIGN 6" N OF STONE.
 3/4" PIPE IS 1.7' SE OF STONE.
 STONE SET IN 1898. IRON PIPE INCORRECTLY SET IN 1986. STONE FOUND IN 2006 BY PLYMOUTH LAND SURVEYING.



CORNER LOCATION IN THE SECTION

V23