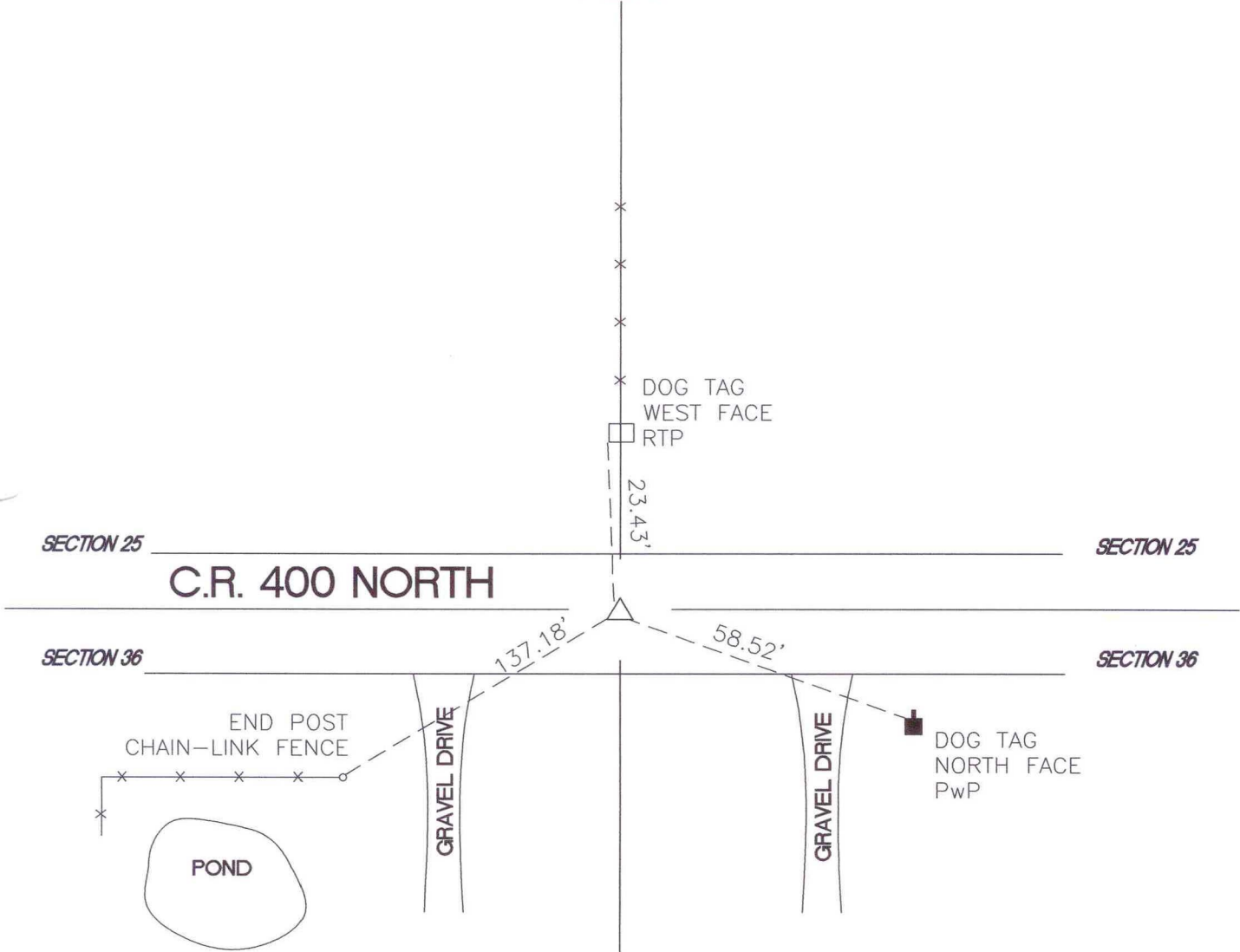


# OREGON TOWNSHIP

## T 34 N, R 1 W

### V23



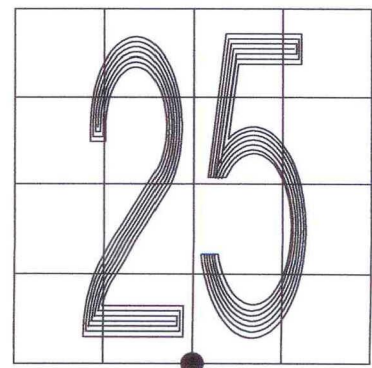
MONUMENT: (F) 3/4" REROD 3" BELOW PAVEMENT

CORNER OF: RECORD  USE

PARTY: VHJ / GR

DATE: 3-17-05

COMMENTS:  
HISTORY: RLP, OF THE STARKE COUNTY SURVEYOR'S OFFICE, SET 3/4" REROD ON OCTOBER 4, 1984.



CORNER LOCATION IN THE SECTION