

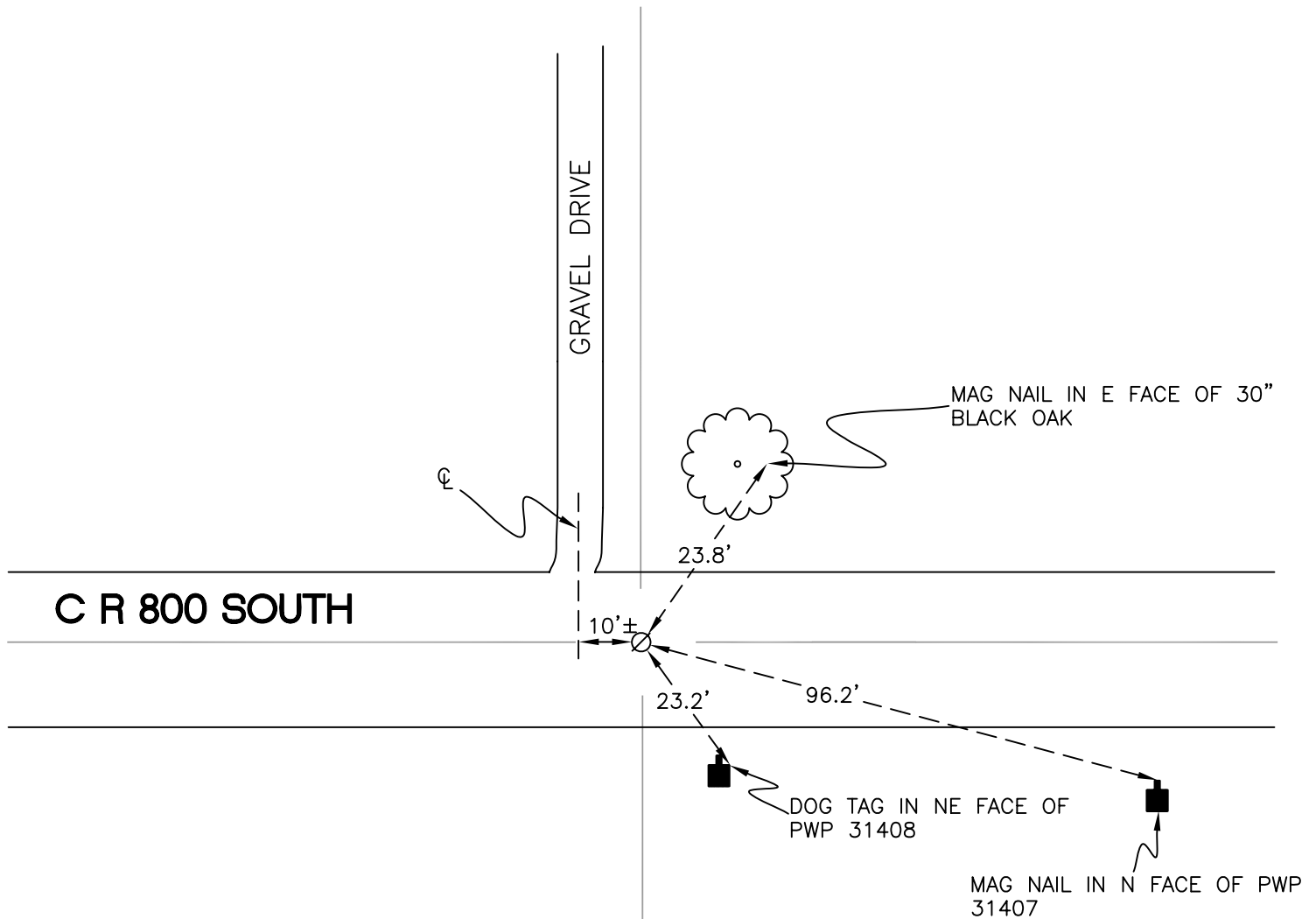
CALIFORNIA TOWNSHIP

T 32 N, R 2 W

V23

SECTION 26

SECTION 25



SECTION 36

SECTION 36

MONUMENT: RR SPIKE w/ PUNCH MARK

PARTY: DPS/JL

DATE: 7/7/14

COMMENTS: MONUMENT IS 1' N OF ϕ OF 800 S. USED IN SURVEYS BY WIGHTMAN CRAMER IN 1996, PROGRESSIVE ENGINEERING IN 2005, AND PLYMOUTH LAND SURVEYING IN 2008. FOUND BY INDOT IN 2012.



CORNER LOCATION IN THE SECTION

V23