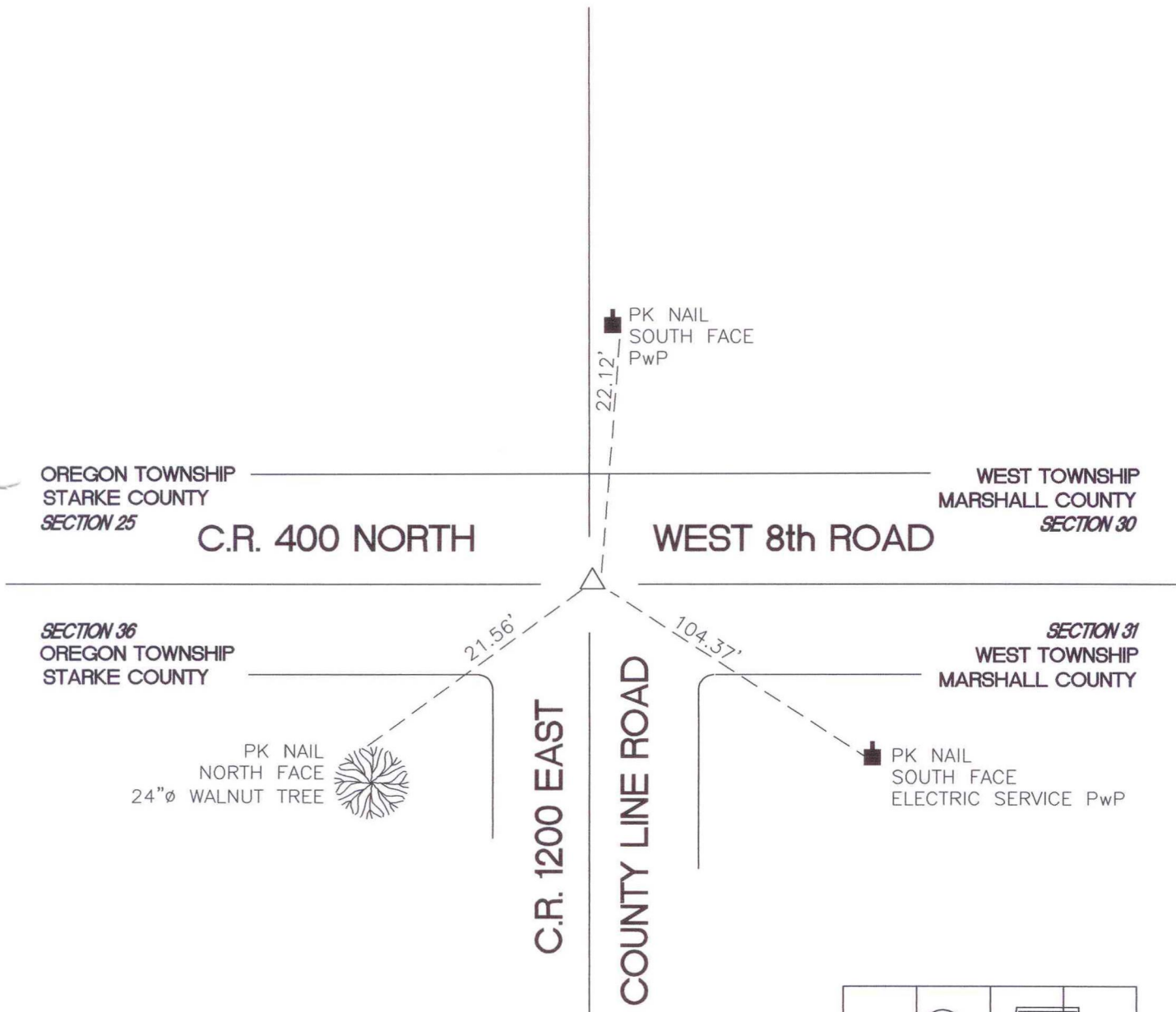


# OREGON TOWNSHIP

## T 34 N, R 1 W



OREGON TOWNSHIP  
STARKE COUNTY  
*SECTION 25*

WEST TOWNSHIP  
MARSHALL COUNTY  
*SECTION 30*

*SECTION 36*  
OREGON TOWNSHIP  
STARKE COUNTY

*SECTION 31*  
WEST TOWNSHIP  
MARSHALL COUNTY

PK NAIL  
NORTH FACE  
24"Ø WALNUT TREE



PK NAIL  
SOUTH FACE  
ELECTRIC SERVICE PwP

MONUMENT: (F) ALUM MONUMENT 3" BELOW GRADE

CORNER OF: RECORD  USE

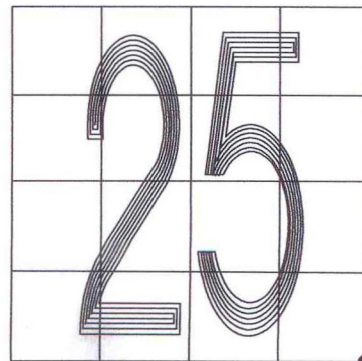
PARTY: VHJ/JR

DATE: 3-17-05

COMMENTS:

HISTORY: JBS/JGH SET 1 1/2" BAR WITH  
3" CIRCULAR BASE ATOP ON APRIL 8, 1981

**INDEX NUMBER**  
**V25**



CORNER LOCATION IN THE SECTION