

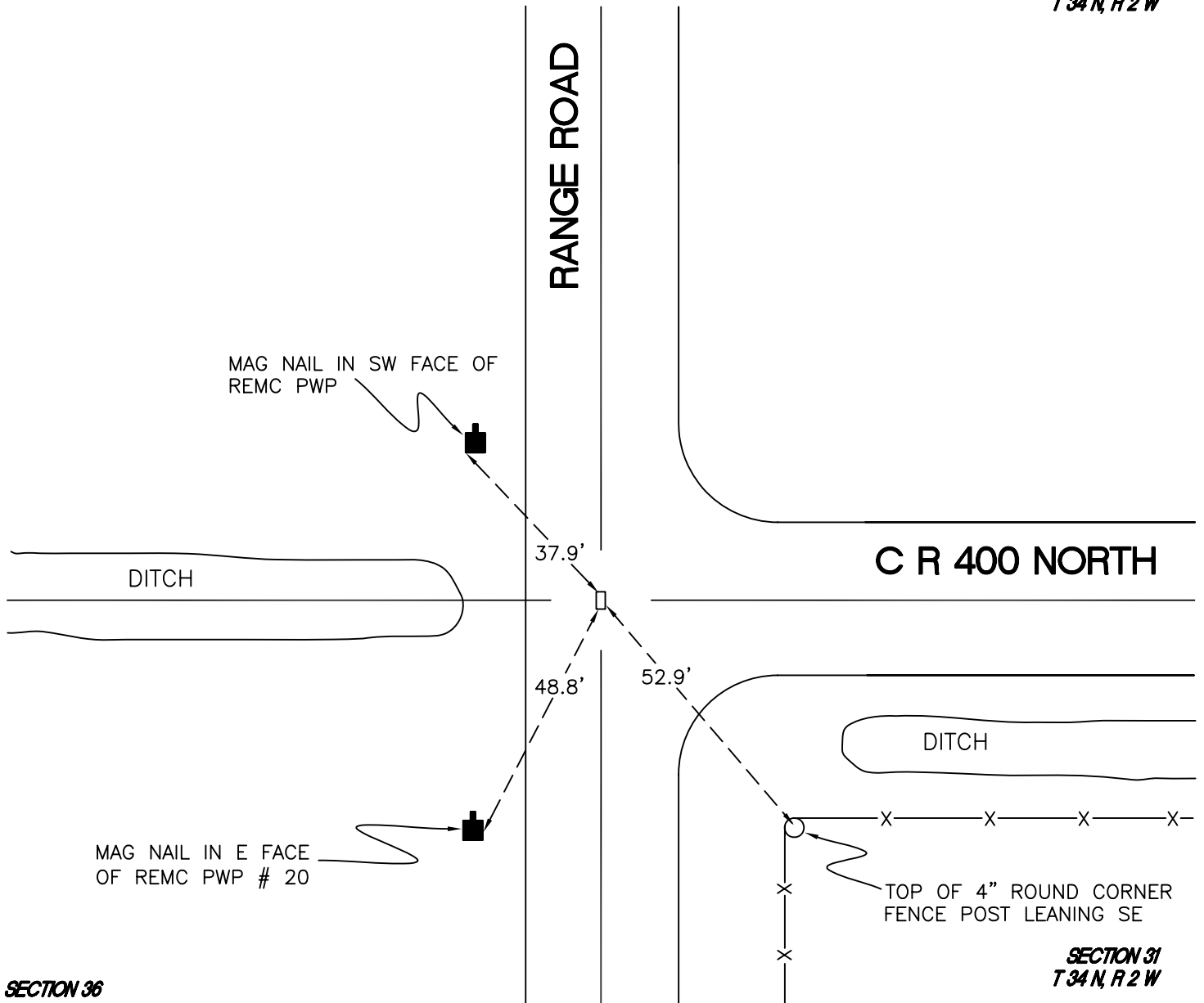
# DAVIS TOWNSHIP

T 34 N, R 3 W

## V25

SECTION 25

SECTION 30  
T 34 N, R 2 W



SECTION 36

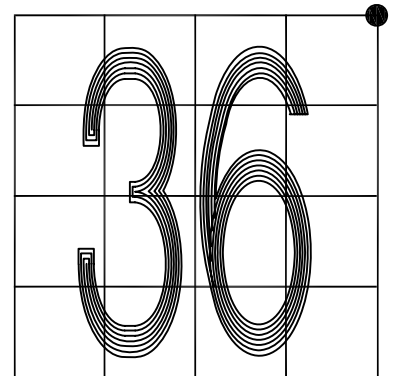
SECTION 31  
T 34 N, R 2 W

MONUMENT: 1" X 1/2" IRON BAR

PARTY: DPS/JL

DATE: APRIL 2016

COMMENTS: 1 1/2" PINCH PIPE ADJACENT TO THE NE.  
0.4' BELOW GRADE. FOUND IN 2010  
BY DPS/MSL.



CORNER LOCATION IN THE SECTION

## V25