

# WASHINGTON TOWNSHIP

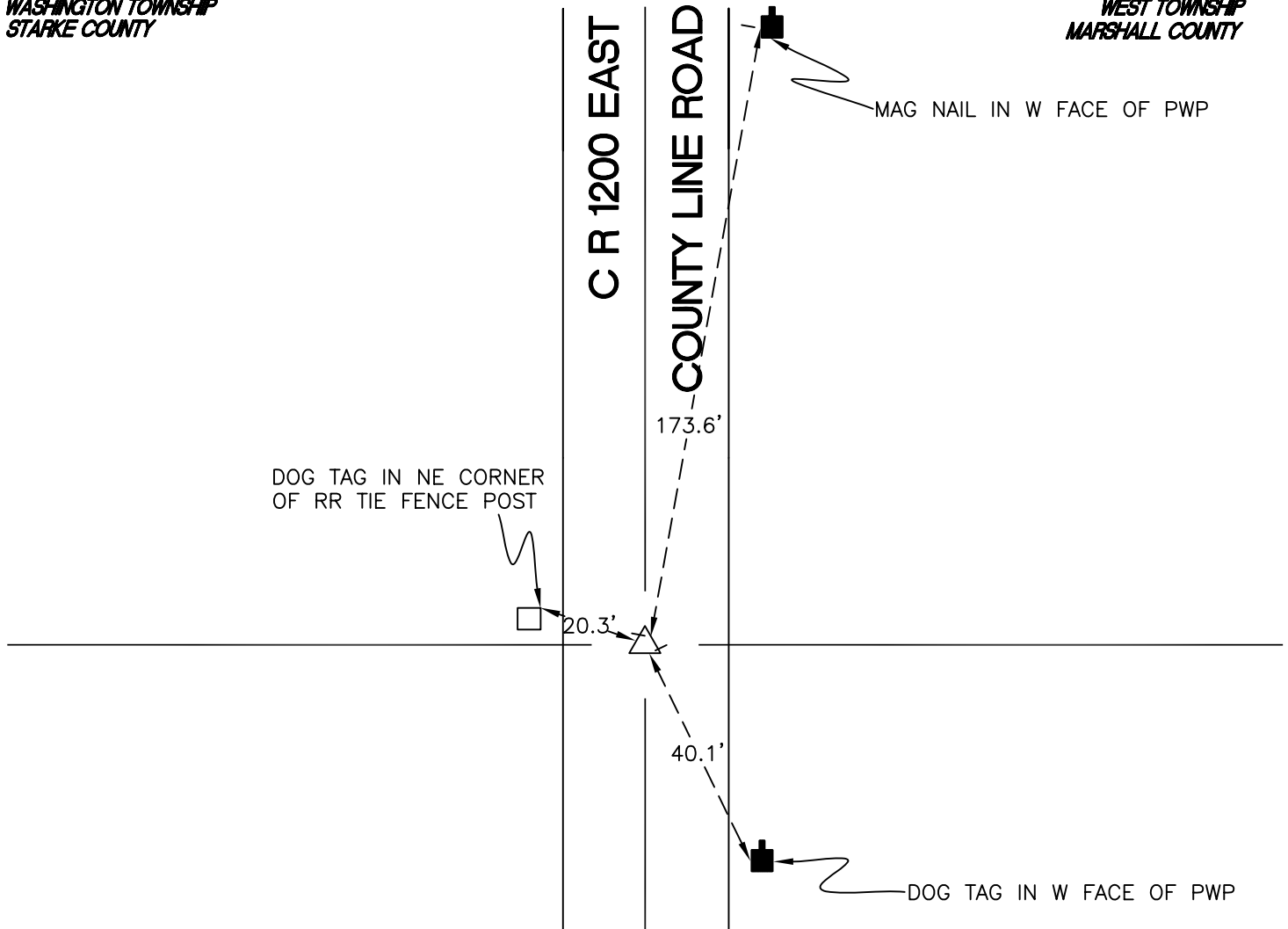
T 33 N, R 1 W

## V25

SECTION 25  
WASHINGTON TOWNSHIP  
STARKE COUNTY

SECTION 30  
WEST TOWNSHIP  
MARSHALL COUNTY

C R 1200 EAST  
COUNTY LINE ROAD



DOG TAG IN NE CORNER  
OF RR TIE FENCE POST

MAG NAIL IN W FACE OF PWP

20.3'

173.6'

40.1'

DOG TAG IN W FACE OF PWP

SECTION 36  
WASHINGTON TOWNSHIP  
STARKE COUNTY

SECTION 31  
WEST TOWNSHIP  
MARSHALL COUNTY

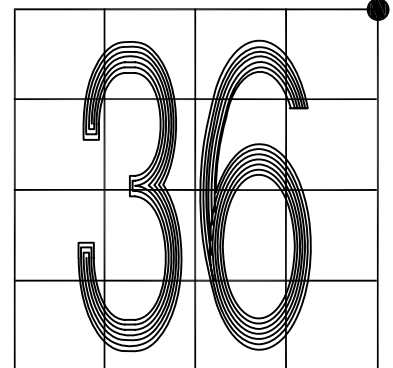
MONUMENT: ALUMINUM MONUMENT

CORNER OF: RECORD  USE

PARTY: JL

DATE: 8-18-2008

COMMENTS: PRIOR TO 1987 MARSHALL AND STARKE COUNTIES USED THE SAME MONUMENT (BRASS PLUG) WHICH WAS ABOUT 1.57' E OF THE CURRENT MONUMENT. IN 1987 MARSHALL COUNTY ESTABLISHED A MONUMENT OVER A FOUND STONE IN THE CURRENT LOCATION. ALL STARKE COUNTY SURVEYS PRIOR TO 1987 USED THE OLD MONUMENT.



CORNER LOCATION IN THE SECTION

## V25