

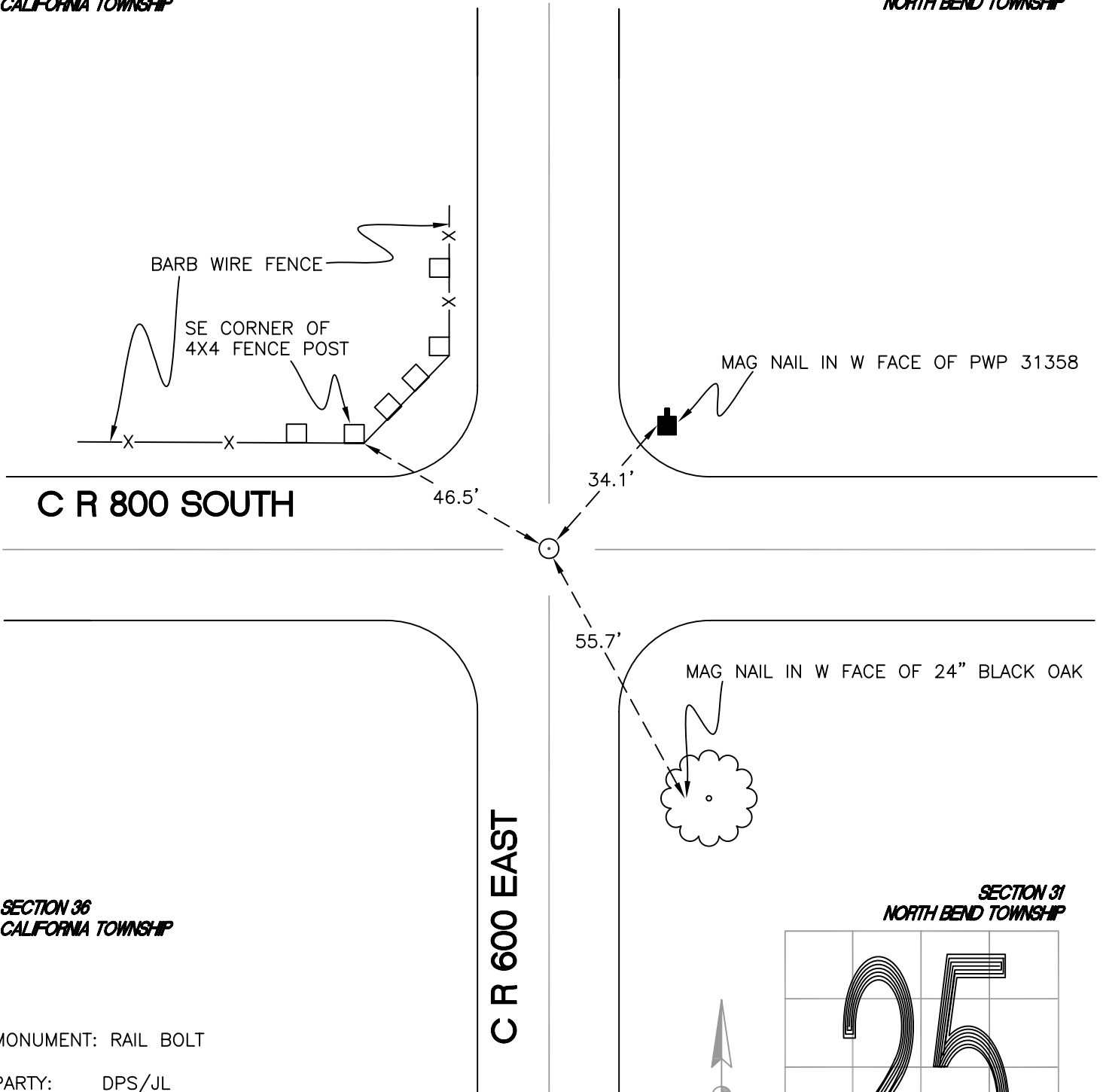
CALIFORNIA TOWNSHIP

T 32 N, R 2 W

V25

SECTION 25
CALIFORNIA TOWNSHIP

SECTION 30
NORTH BEND TOWNSHIP



C R 800 SOUTH

C R 600 EAST

SECTION 36
CALIFORNIA TOWNSHIP

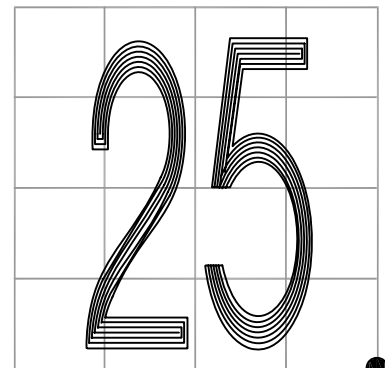
SECTION 31
NORTH BEND TOWNSHIP

MONUMENT: RAIL BOLT

PARTY: DPS/JL

DATE: 7/7/14

COMMENTS: SET BY TERRITORIAL ENGINEERING IN 2000
IN DOCUMENT # 2001449891. FOUND IN
2012 BY JL/AO.



CORNER LOCATION IN THE SECTION

V25