

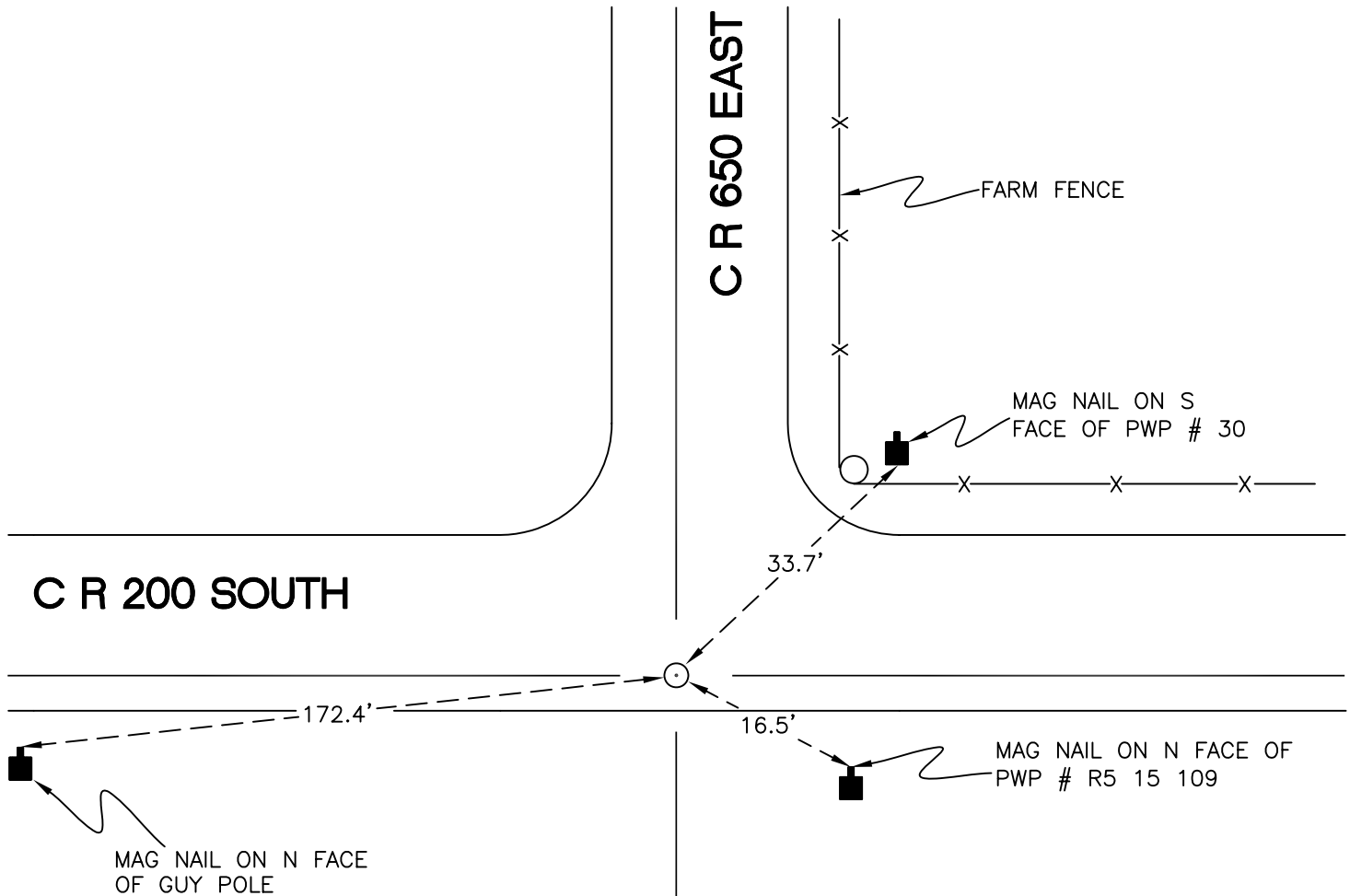
WASHINGTON TOWNSHIP

T 33 N, R 1 W

V3

SECTION 30

SECTION 30



SECTION 31

SECTION 31

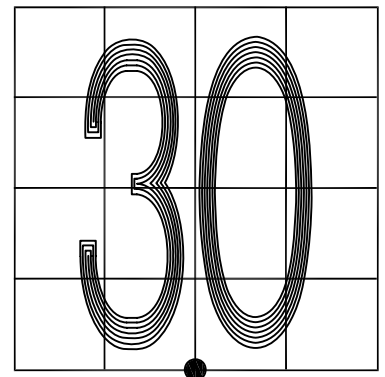
MONUMENT: RAIL BOLT w/ PUNCH MARK

CORNER OF: RECORD USE

PARTY: JL/PM

DATE: 7-3-2008

COMMENTS: 1" BELOW GRADE; 5' S OF C OF 200S; 2' W OF C OF 650E
SET BY SINGLE PROPORTIONATE METHOD FROM NE AND NW SECTION CORNERS 31-33-1.



CORNER LOCATION IN THE SECTION

V3