

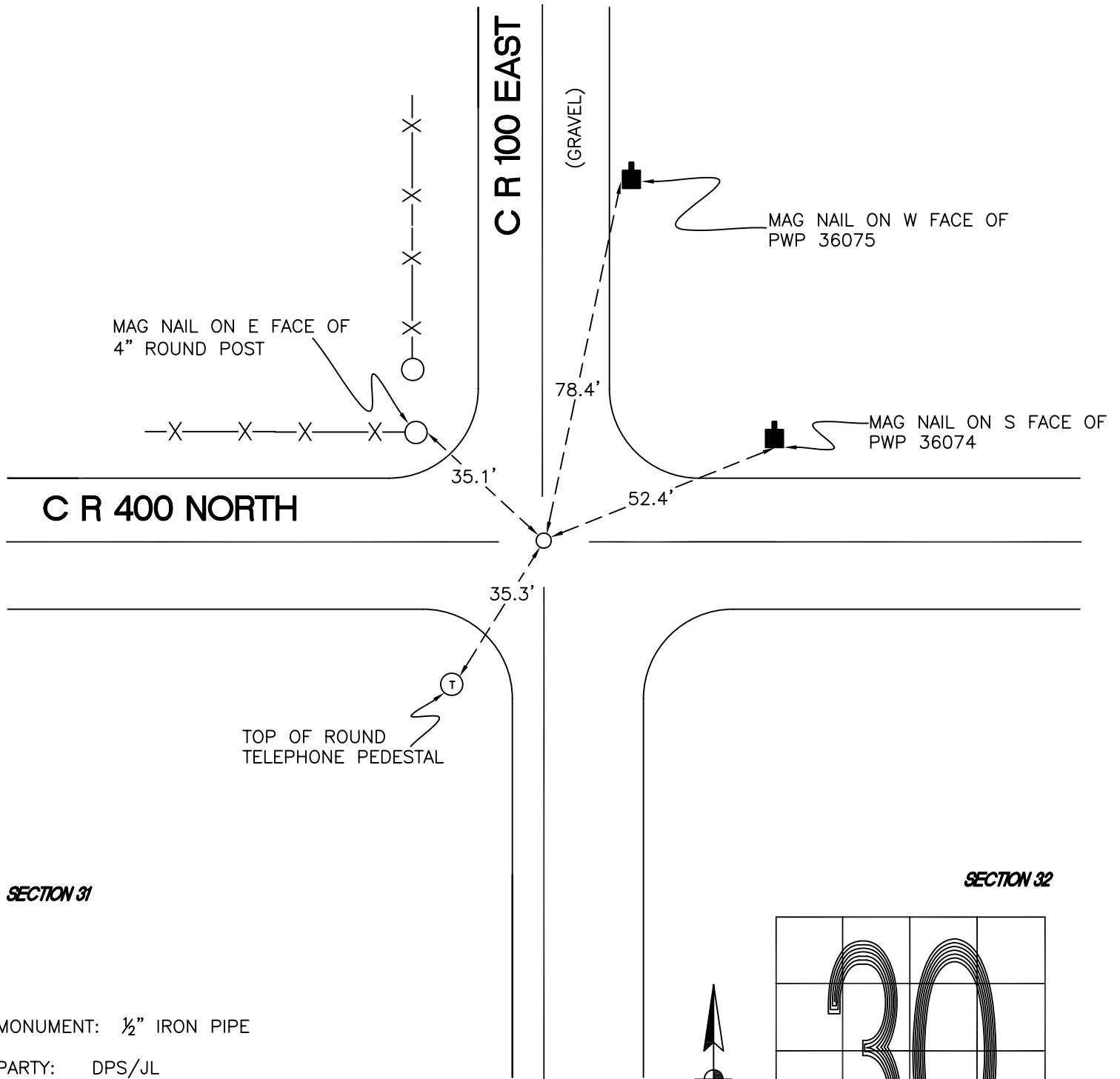
DAVIS TOWNSHIP

T 34 N, R 2 W

V5

SECTION 30

SECTION 29



SECTION 31

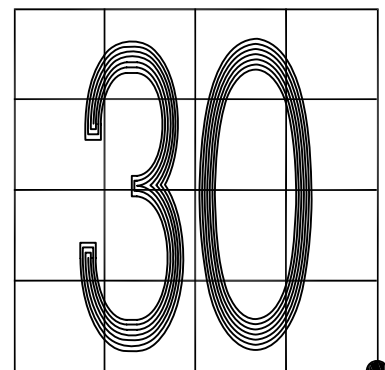
SECTION 32

MONUMENT: 1/2" IRON PIPE

PARTY: DPS/JL

DATE: 5-12-16

COMMENTS: 2" WELL POINT FOUND IN 1927
BY C. E. PAUL AND TERRITORIAL
ENGINEERING IN 1985.



CORNER LOCATION IN THE SECTION

V5