

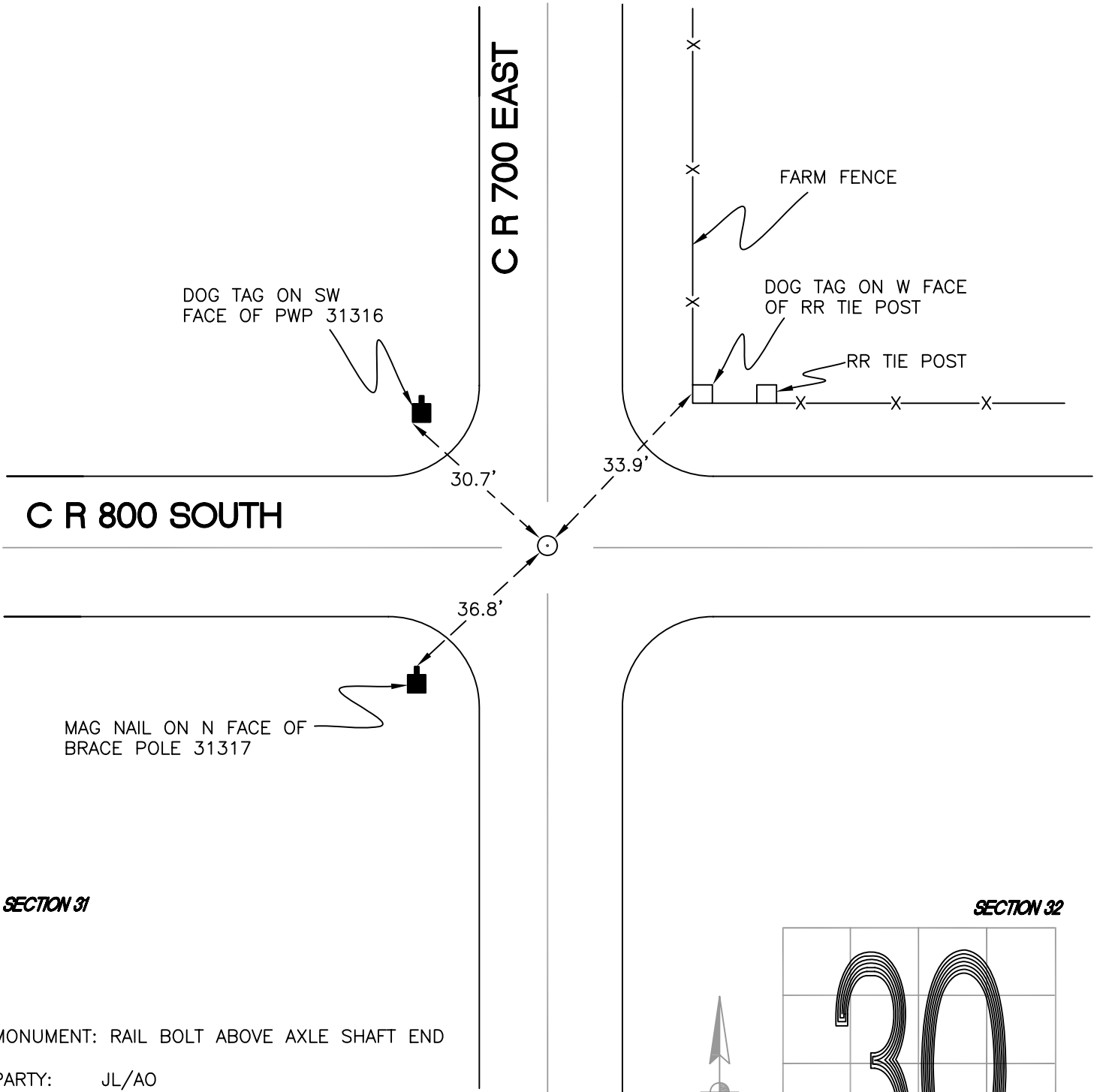
# NORTH BEND TOWNSHIP

T 32 N, R 1 W

## V5

SECTION 30

SECTION 29



SECTION 31

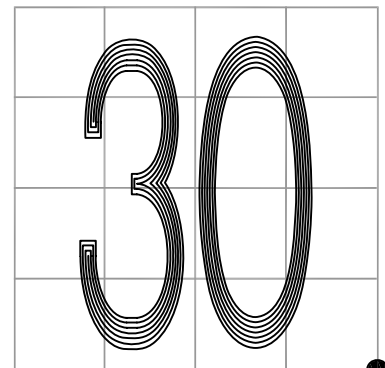
SECTION 32

MONUMENT: RAIL BOLT ABOVE AXLE SHAFT END

PARTY: JL/AO

DATE: 6/7/12

COMMENTS: FOUND REAR AXLE SHAFT END 9" BELOW GRADE; SET RAIL BOLT ABOVE MIDDLE OF AXEL. FOUND BY CETA IN 1977, REH IN 1982, AND RLP IN 1984.



CORNER LOCATION IN THE SECTION

## V5