

OREGON TOWNSHIP

T 34 N, R 1 W

V5

C.R. 700 EAST

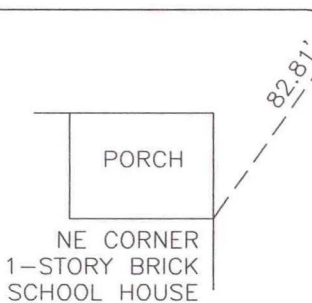
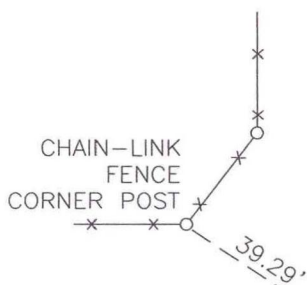
C.R. 400 NORTH

SECTION 30

SECTION 29

SECTION 31

SECTION 32



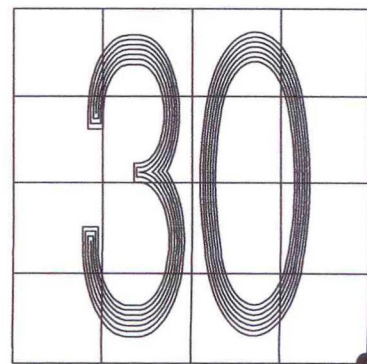
MONUMENT: (F) HARRISON MONU 6½" BELOW GRADE

CORNER OF: RECORD USE

PARTY: VHJ/GR

DATE: 3-18-05

COMMENTS:



CORNER LOCATION IN THE SECTION