

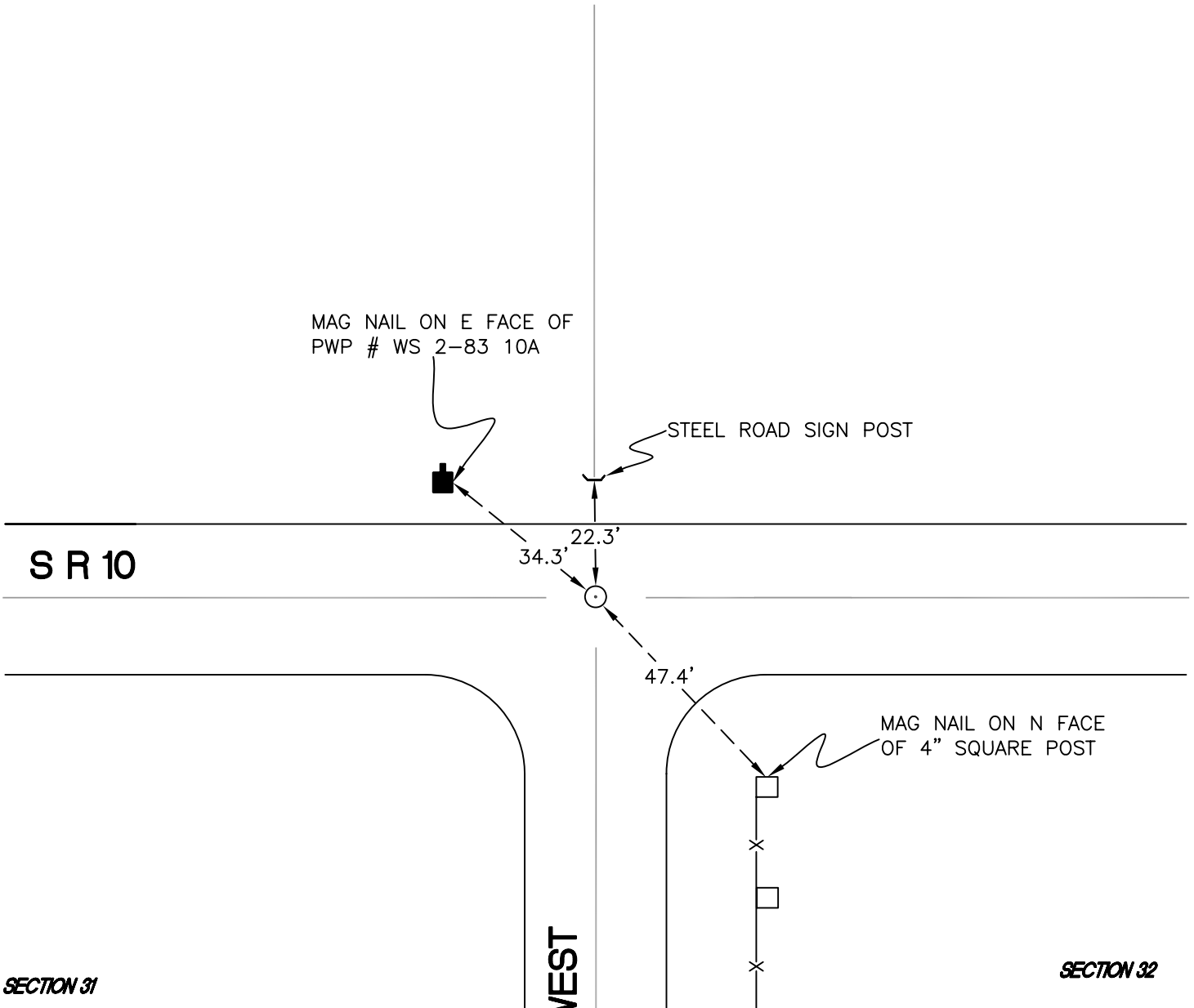
RAILROAD TOWNSHIP

T 32 N, R 4 W

V5

SECTION 30

SECTION 29

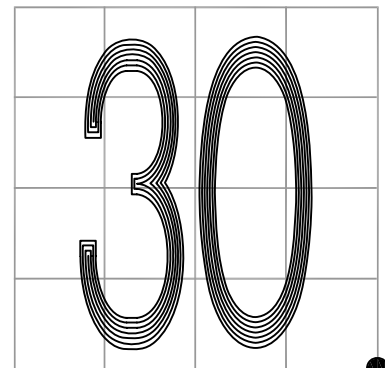


MONUMENT: RAILROAD BOLT

PARTY: DPS/JL

DATE: 5/7/2015

COMMENTS: MONUMENT IS 0.1' BELOW GRADE. FOUND BY VHJ IN 1986 AND SJF IN 1990.



CORNER LOCATION IN THE SECTION

V5