

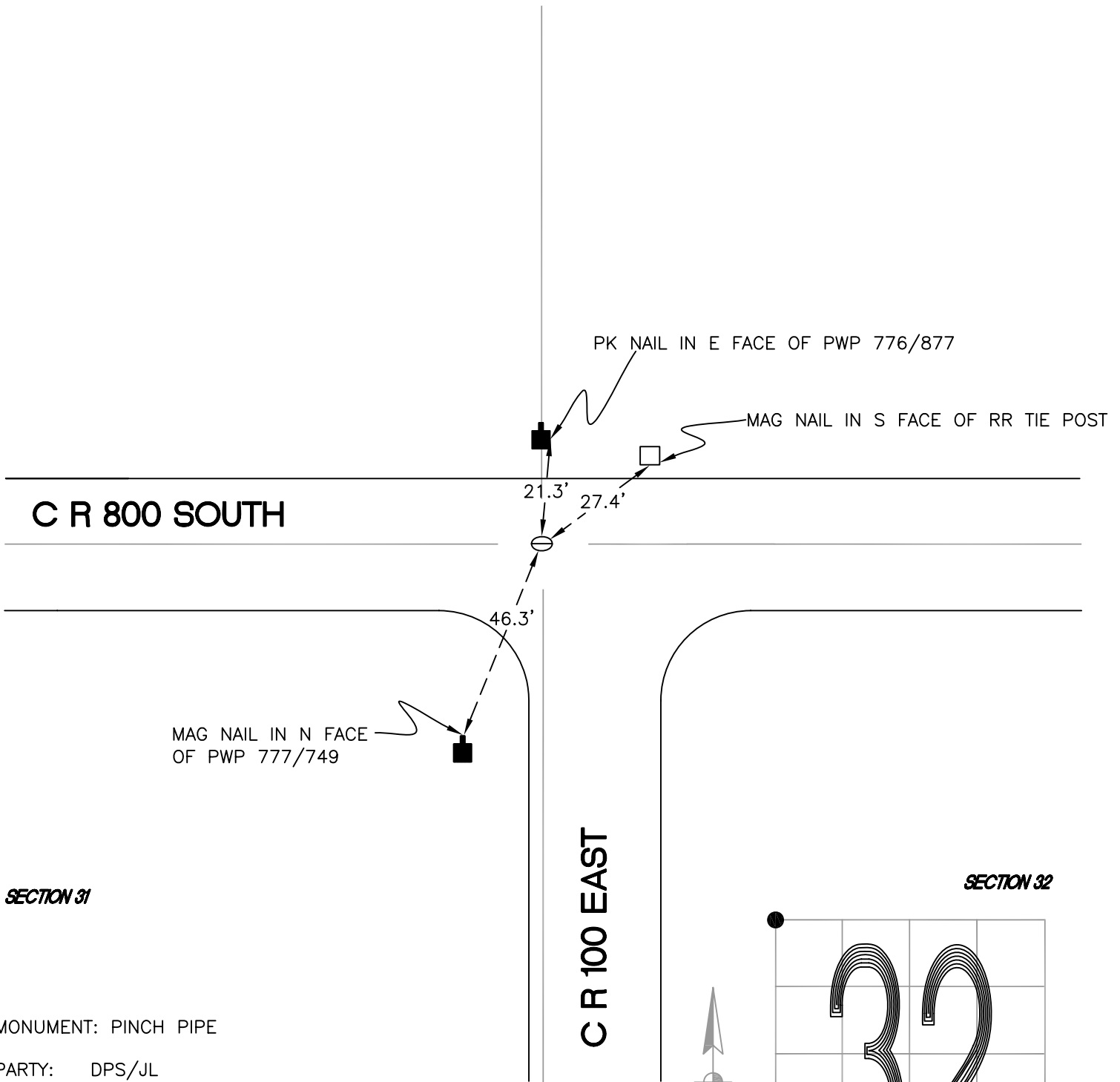
# CALIFORNIA TOWNSHIP

T 32 N, R 2 W

## V5

SECTION 30

SECTION 29



SECTION 31

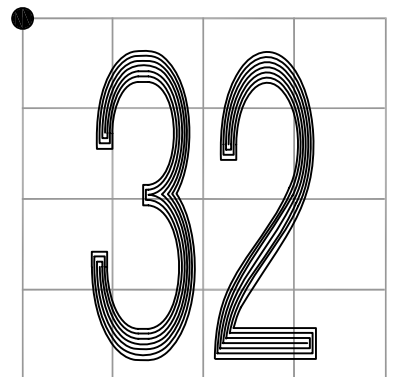
SECTION 32

MONUMENT: PINCH PIPE

PARTY: DPS/JL

DATE: 7/15/14

COMMENTS: 8' W OF  $\odot$  OF 100 E. FOUND BY CETA  
IN 1977 AND IN 1981.



CORNER LOCATION IN THE SECTION

## V5