

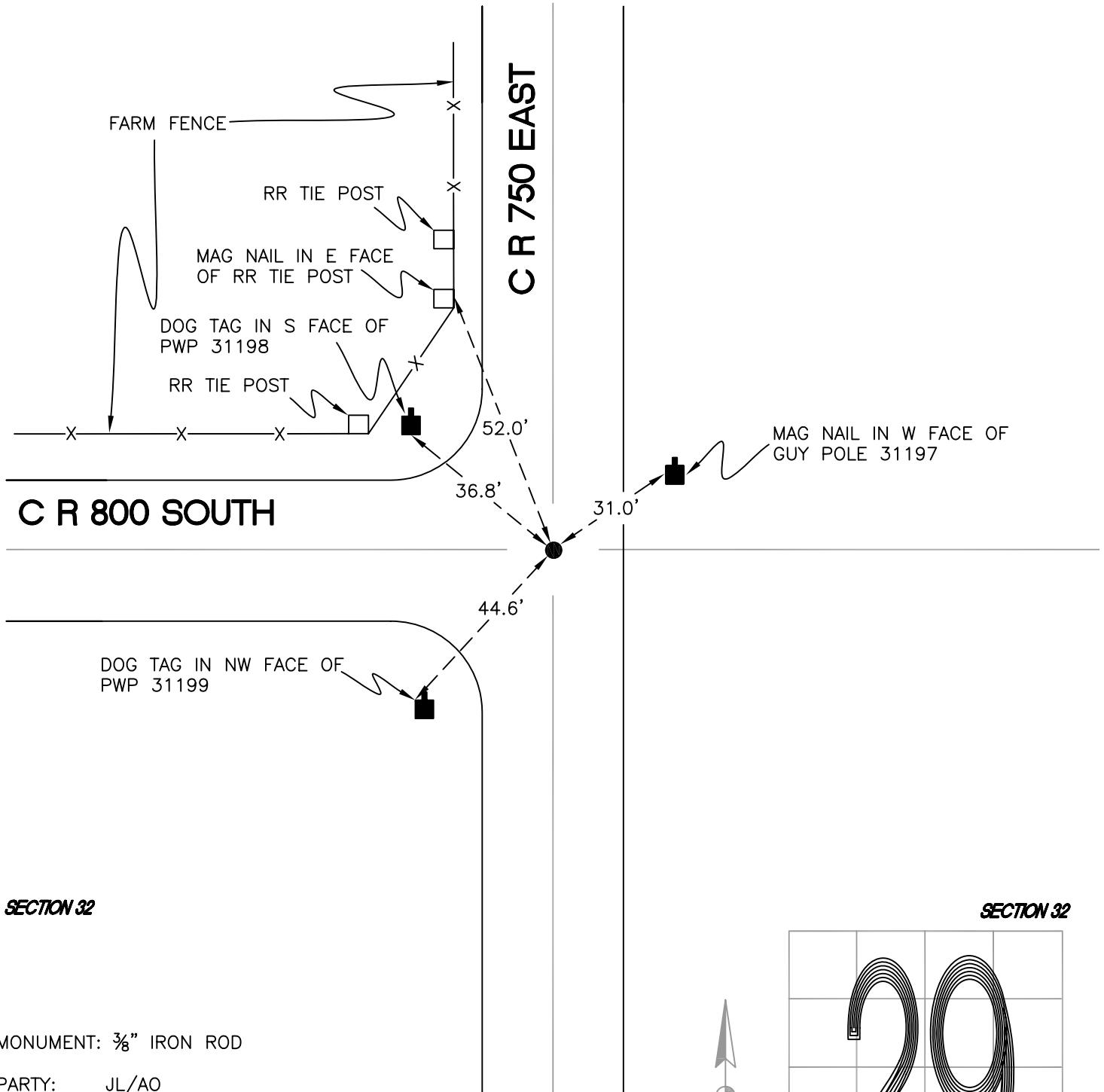
NORTH BEND TOWNSHIP

T 32 N, R 1 W

V7

SECTION 29

SECTION 29



SECTION 32

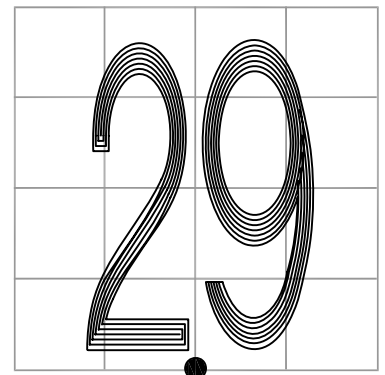
SECTION 32

MONUMENT: $\frac{3}{8}$ " IRON ROD

PARTY: JL/AO

DATE: 6/7/12

COMMENTS: 3" BELOW GRADE; 1" E OF \O OF 750 E.
FOUND BY CETA IN 1977, RLP IN 1984,
AND VHJ/DC IN 1992.



CORNER LOCATION IN THE SECTION

V7