

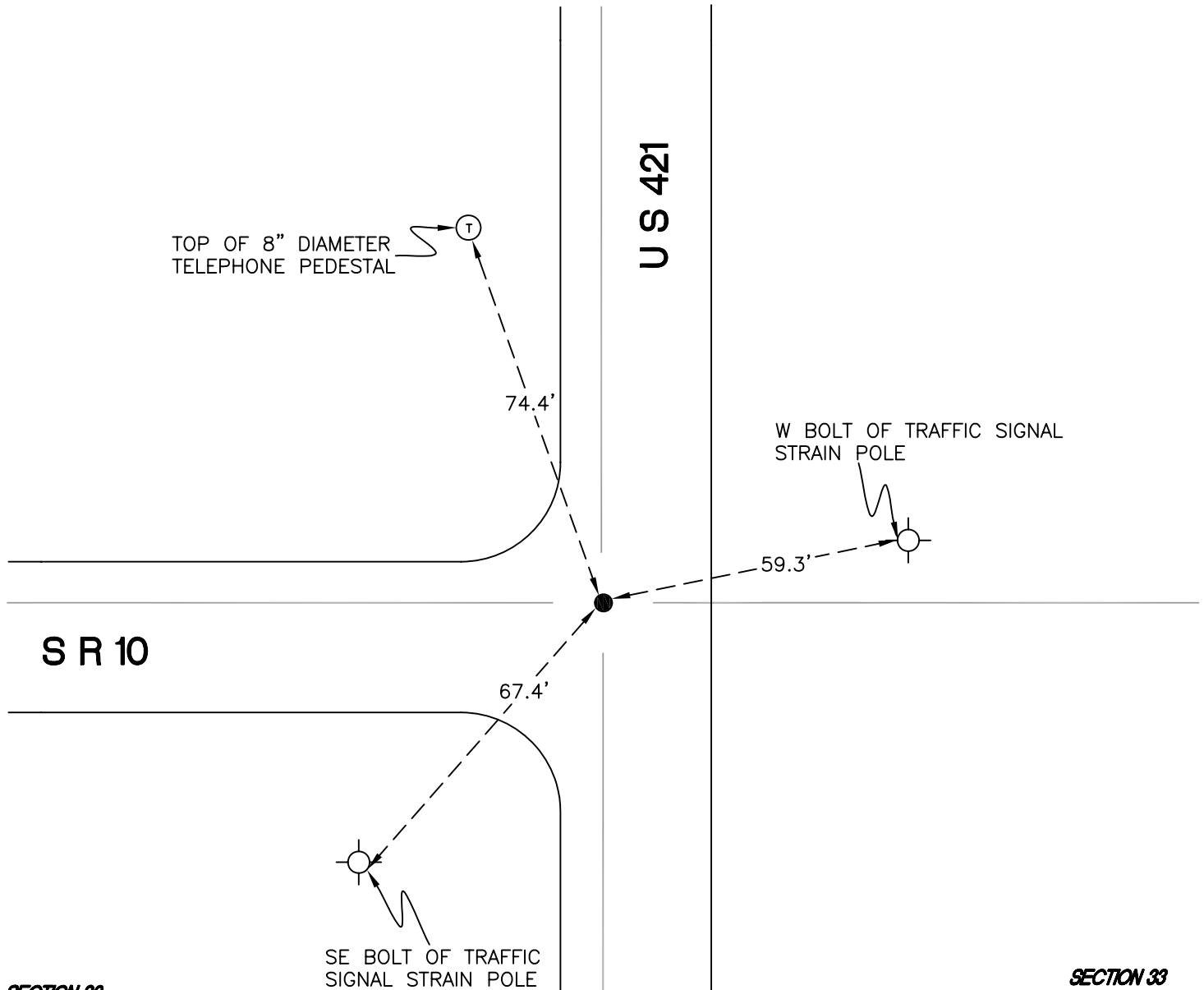
RAILROAD TOWNSHIP

T 32 N, R 4 W

V9

SECTION 29

SECTION 28



SECTION 32

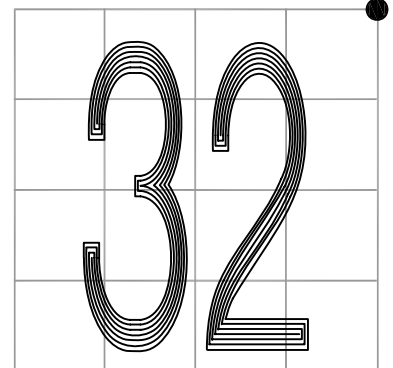
SECTION 33

MONUMENT: 1" IRON ROD

PARTY: DPS/JL

DATE: 2015

COMMENTS: FOUND BY VHJ IN 1986. 1" ROD SET BY INDOT AND VERIFIED BY VHJ/JL IN 1986. MONUMENT IS 6' N OF ϕ OF S R 10 AND 5' W OF ϕ OF U S 421.



CORNER LOCATION IN THE SECTION

V9