

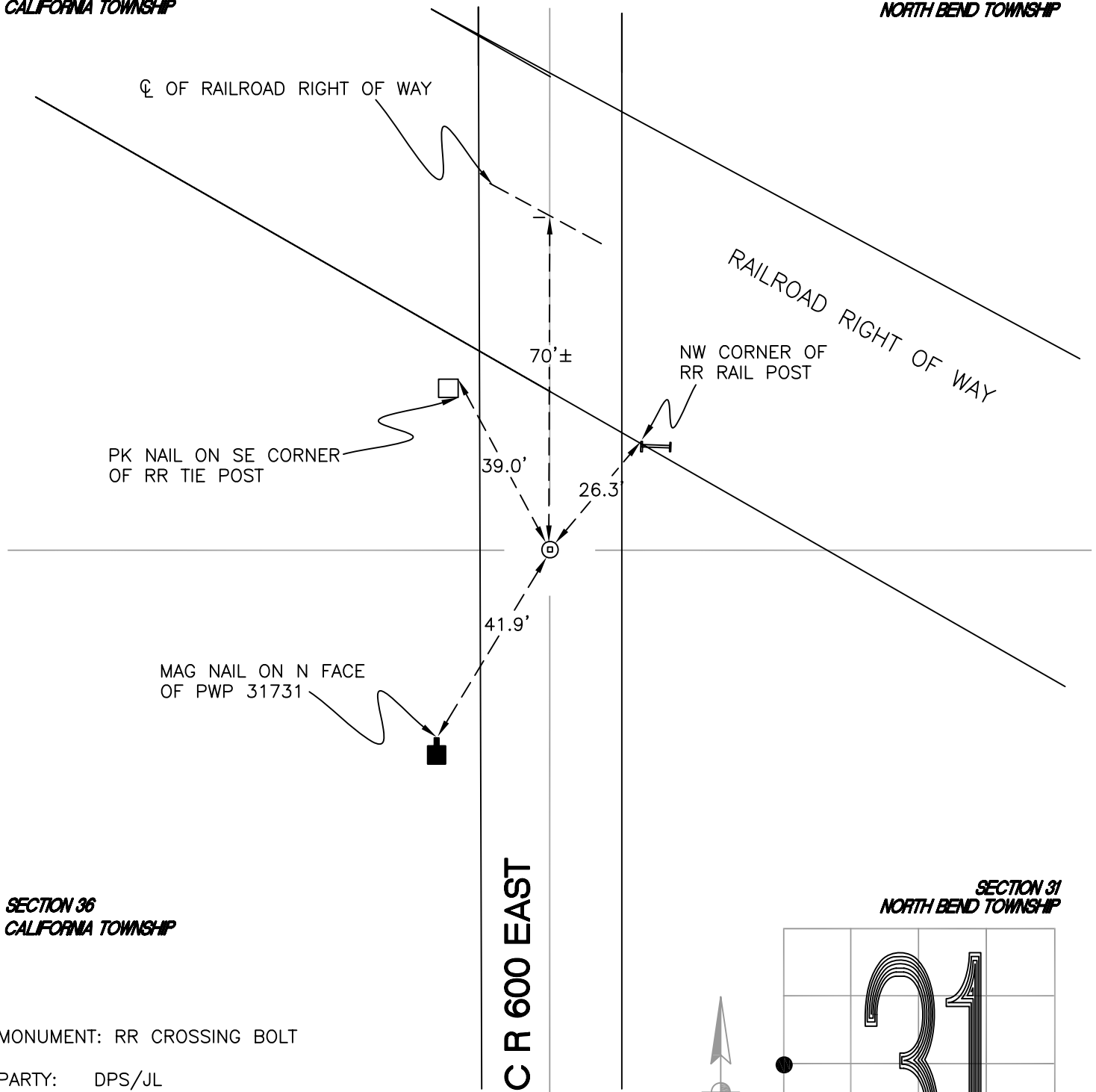
NORTH BEND TOWNSHIP

T 32 N, R 1 W

X1

SECTION 36
CALIFORNIA TOWNSHIP

SECTION 31
NORTH BEND TOWNSHIP



SECTION 36
CALIFORNIA TOWNSHIP

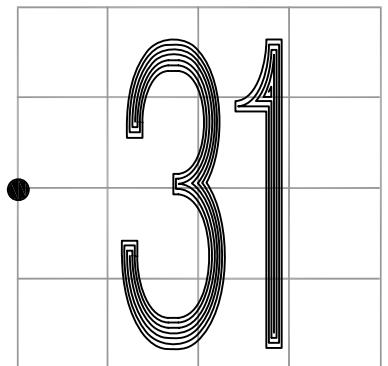
SECTION 31
NORTH BEND TOWNSHIP

MONUMENT: RR CROSSING BOLT

PARTY: DPS/JL

DATE: 7/7/14

COMMENTS: CROSSING BOLT REPLACES RR SPIKE LOST IN ROAD CONSTRUCTION. RESET MONUMENT IN 2012 BASED ON DISTANCES TO TWO REMAINING REFERENCES AND THE DISTANCE TO THE SW CORNER OF SECTION 31.



CORNER LOCATION IN THE SECTION

X1