

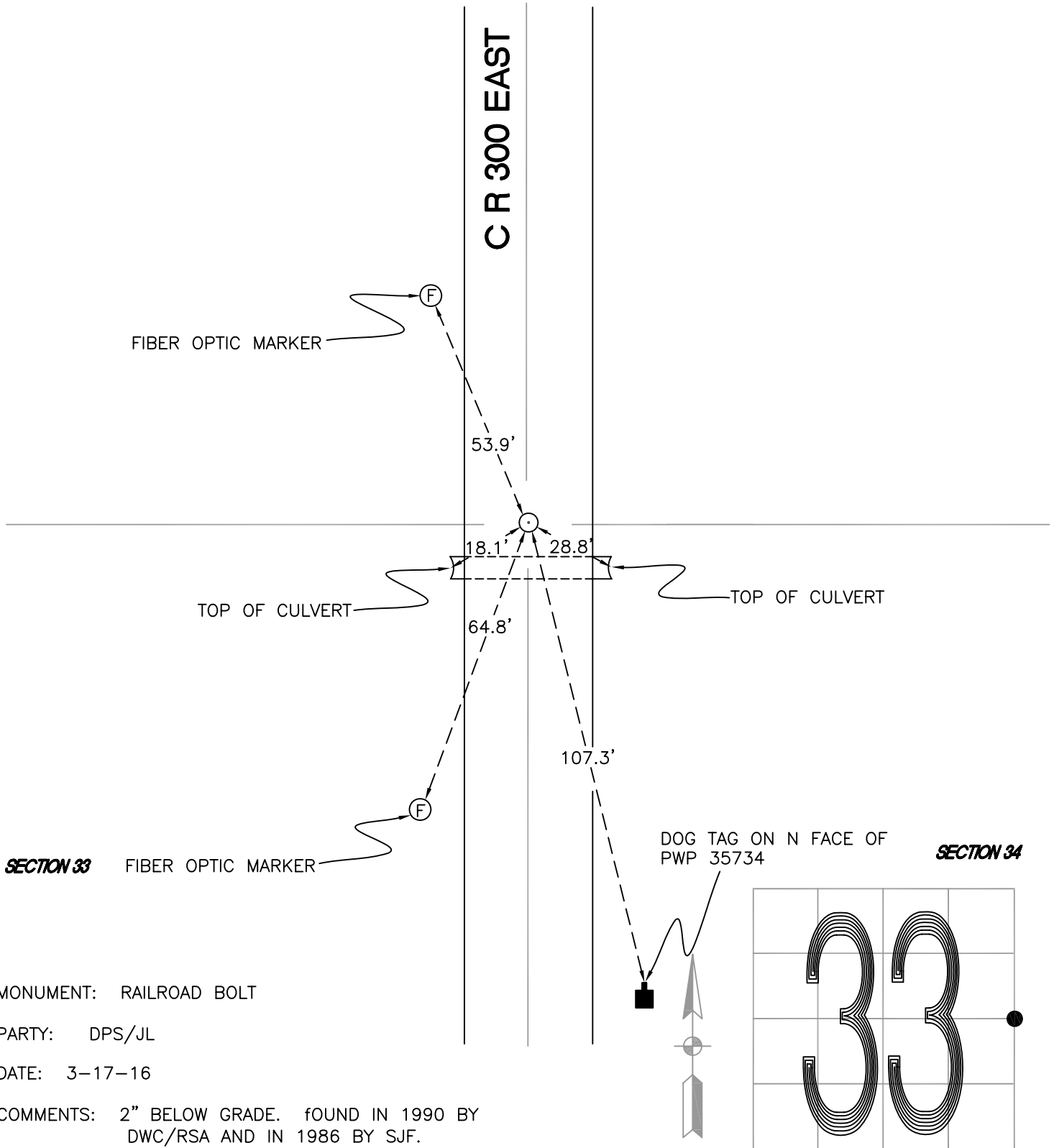
DAVIS TOWNSHIP

T 34 N, R 2 W

X13

SECTION 33

SECTION 34



SECTION 33

FIBER OPTIC MARKER

DOG TAG ON N FACE OF
PWP 35734

SECTION 34

MONUMENT: RAILROAD BOLT

PARTY: DPS/JL

DATE: 3-17-16

COMMENTS: 2" BELOW GRADE. FOUND IN 1990 BY
DWC/RSA AND IN 1986 BY SJF.

CORNER LOCATION IN THE SECTION

X13