

# STARKE COUNTY SECTION CORNER RECORD

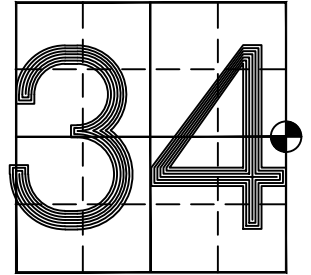
**MONUMENT:** HARRISON (FL)  
**TOWNSHIP:** OREGON  
**PARTY:** DDC  
**DATE:** 3/25/2021  
**COMMENTS:**  
 PREVIOUS MONUMENT WAS A RR X BOLT  
 WITNESSED BY VHU/GR OF TERRITORIAL  
 ENGINEERING ON 3/17/05.

## STATE PLANE COORDINATES

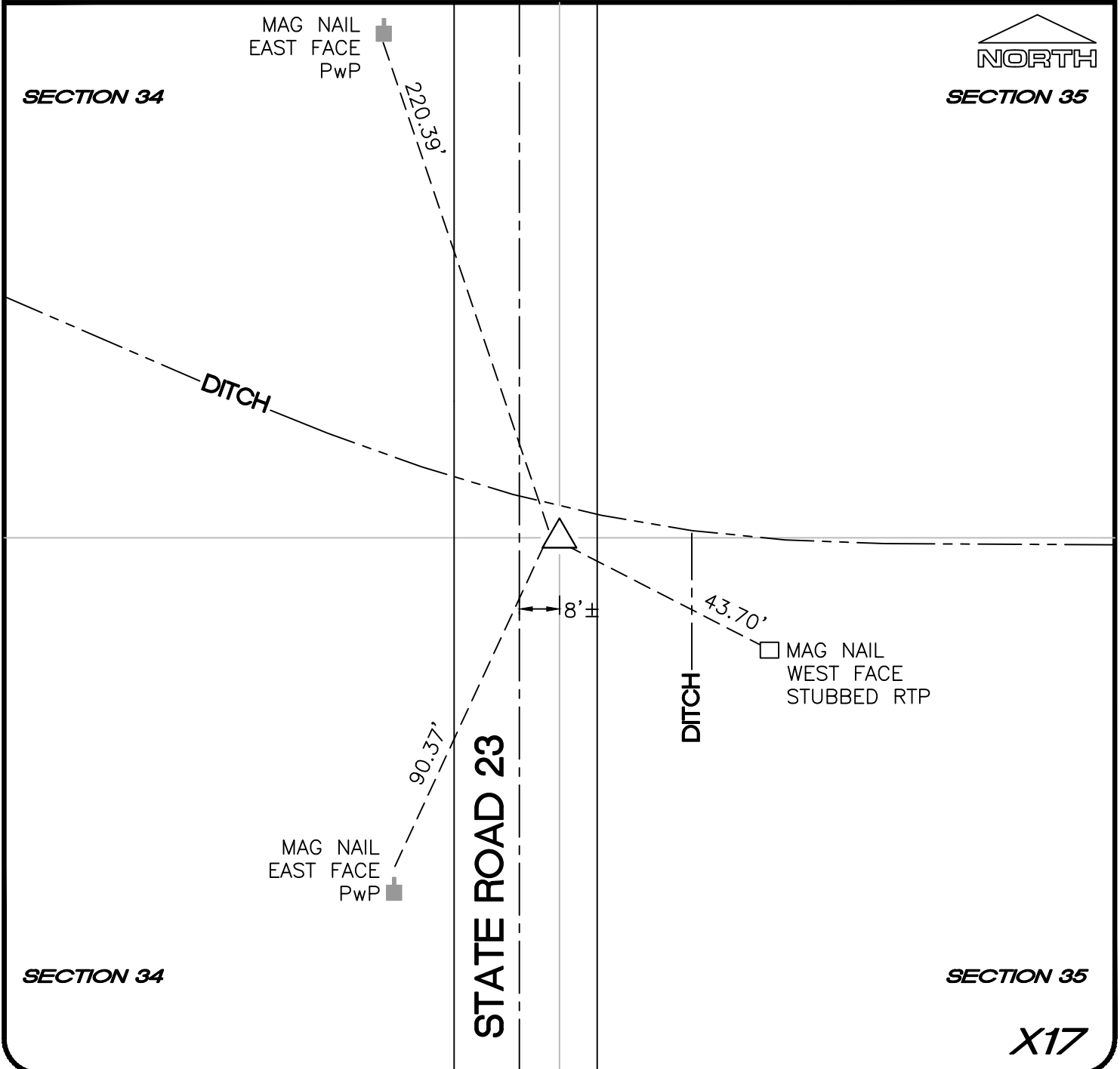
**DATUM:** NAD83  
**ZONE:** INDIANA WEST 1302  
**NORTHING:** 2224211.771  
**EASTING:** 3111554.419

**NOTE:**  
 COORDINATES BASED ON INCORS NETWORK FOR  
 GENERAL REFERENCE PURPOSES ONLY AND SHALL *NOT*  
 BE USED FOR BOUNDARY SURVEY PURPOSES. STARKE  
 COUNTY DOES NOT WARRANT OR GUARANTEE THE  
 ACCURACY OF THIS DATA AND DISCLAIMS ANY  
 RESPONSIBILITY OR LIABILITY FOR INTERPRETATIONS  
 BASED ON USING THIS DATA FOR BOUNDARY DECISIONS.

**LATITUDE:** 41°21'11.43846"N  
**LONGITUDE:** 86°30'17.67379"W



**SEC.34-T34N-R1W**



**X17**