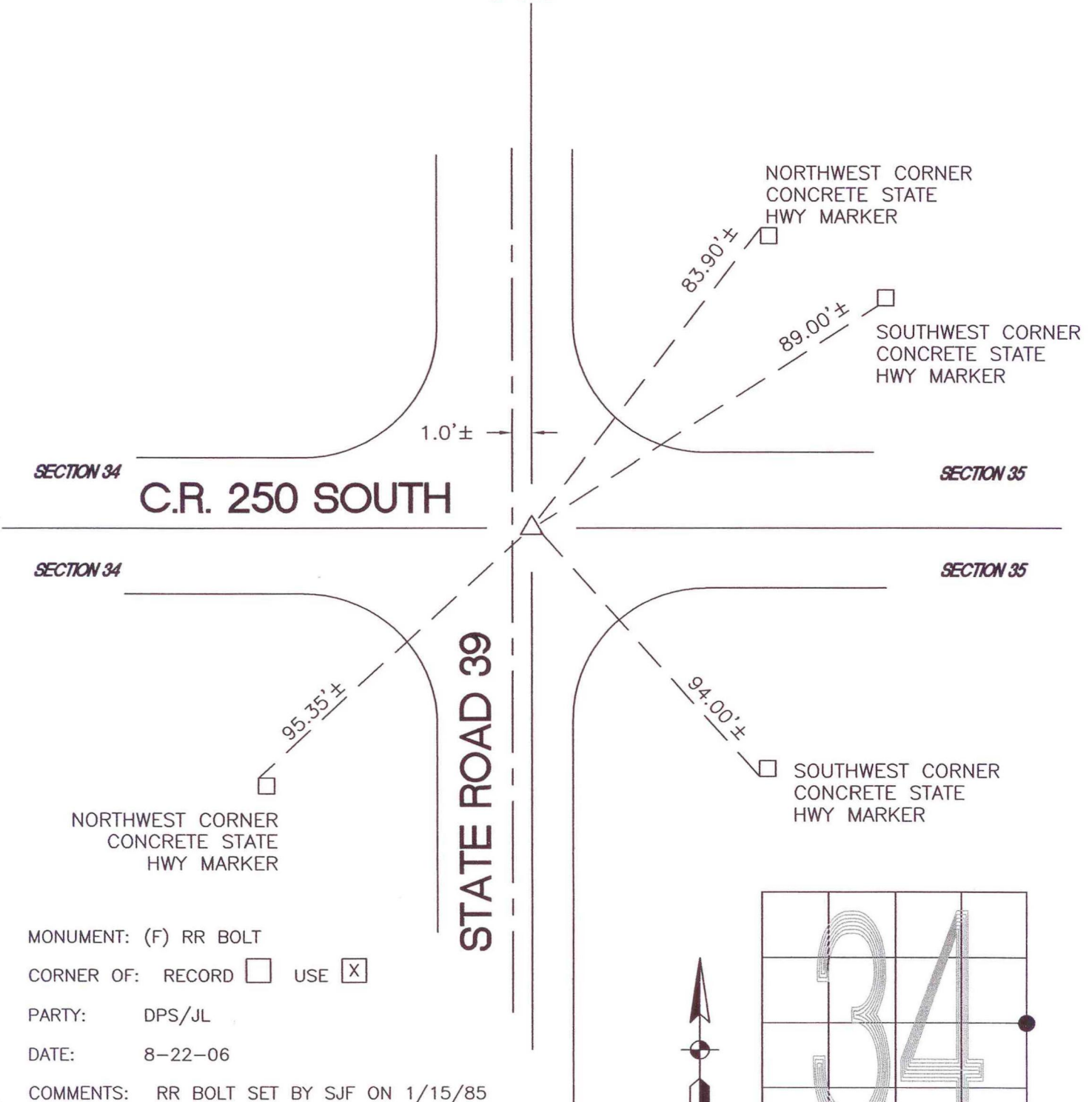


# JACKSON TOWNSHIP

T 33 N, R 3 W

## X17



NORTHWEST CORNER  
CONCRETE STATE  
HWY MARKER

83.90' ±

89.00' ±

SOUTHWEST CORNER  
CONCRETE STATE  
HWY MARKER

1.0' ±

SECTION 34

### C.R. 250 SOUTH

SECTION 35

SECTION 34

SECTION 35

95.35' ±

NORTHWEST CORNER  
CONCRETE STATE  
HWY MARKER

94.00' ±

SOUTHWEST CORNER  
CONCRETE STATE  
HWY MARKER

### STATE ROAD 39

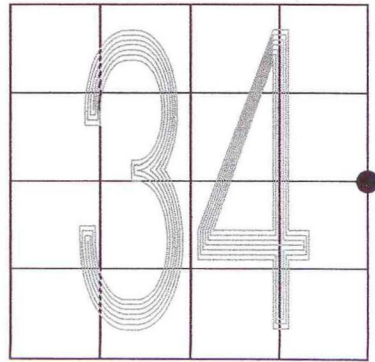
MONUMENT: (F) RR BOLT

CORNER OF: RECORD  USE

PARTY: DPS/JL

DATE: 8-22-06

COMMENTS: RR BOLT SET BY SJF ON 1/15/85



CORNER LOCATION IN THE SECTION