

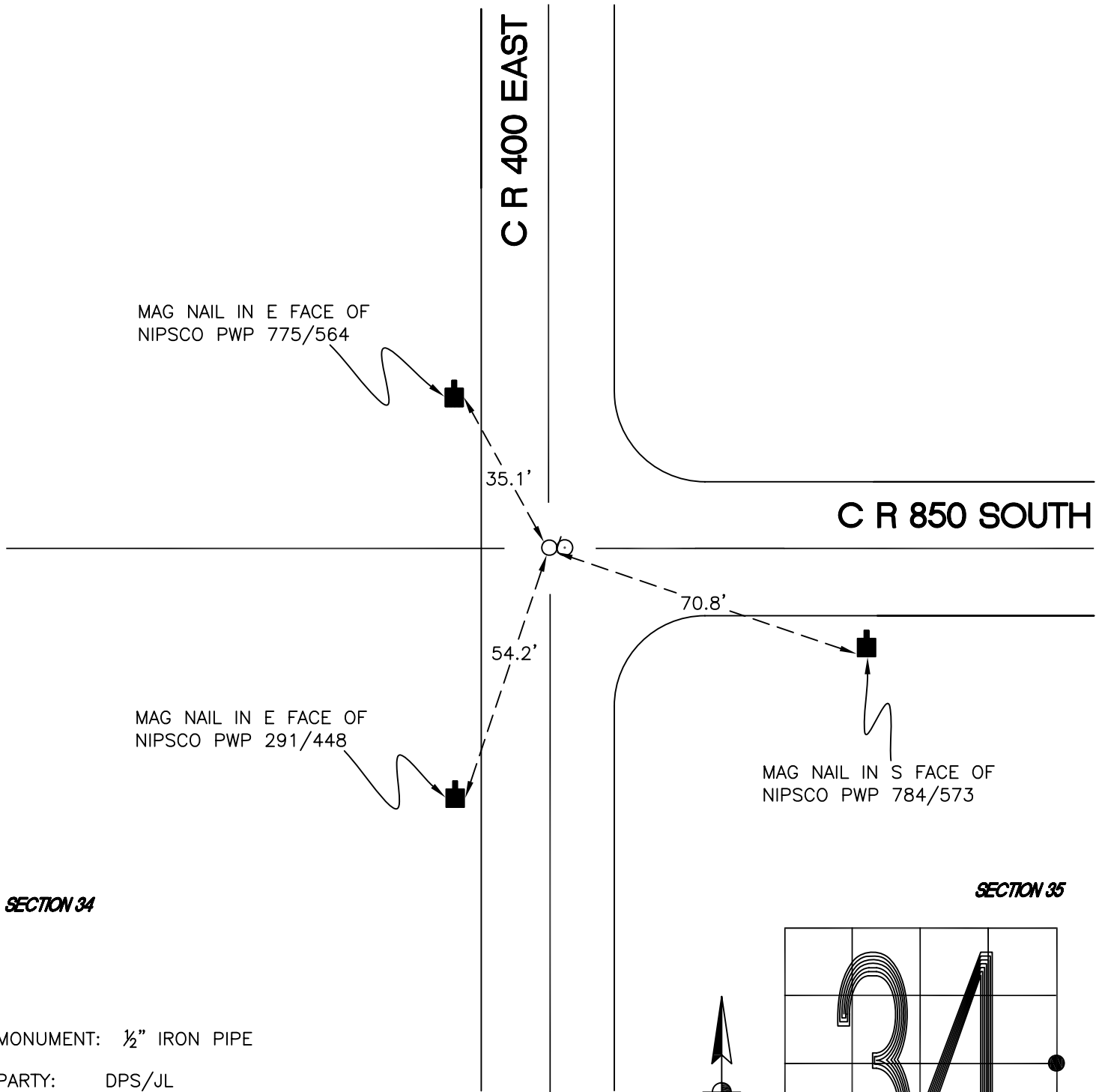
CALIFORNIA TOWNSHIP

T 32 N, R 2 W

X17

SECTION 34

SECTION 35



SECTION 34

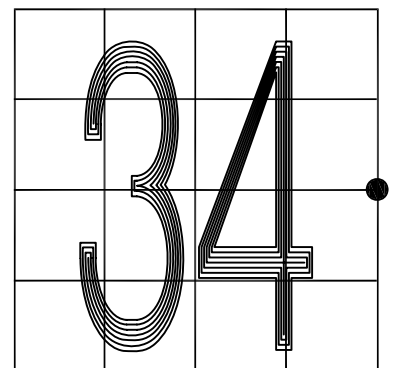
SECTION 35

MONUMENT: 1/2" IRON PIPE

PARTY: DPS/JL

DATE: 9/26/12

COMMENTS: RAIL BOLT w/ PUNCH MARK NEXT TO IRON PIPE ON THE EAST. REFERENCED BY C. E. PAUL IN 1929.



CORNER LOCATION IN THE SECTION

X17