

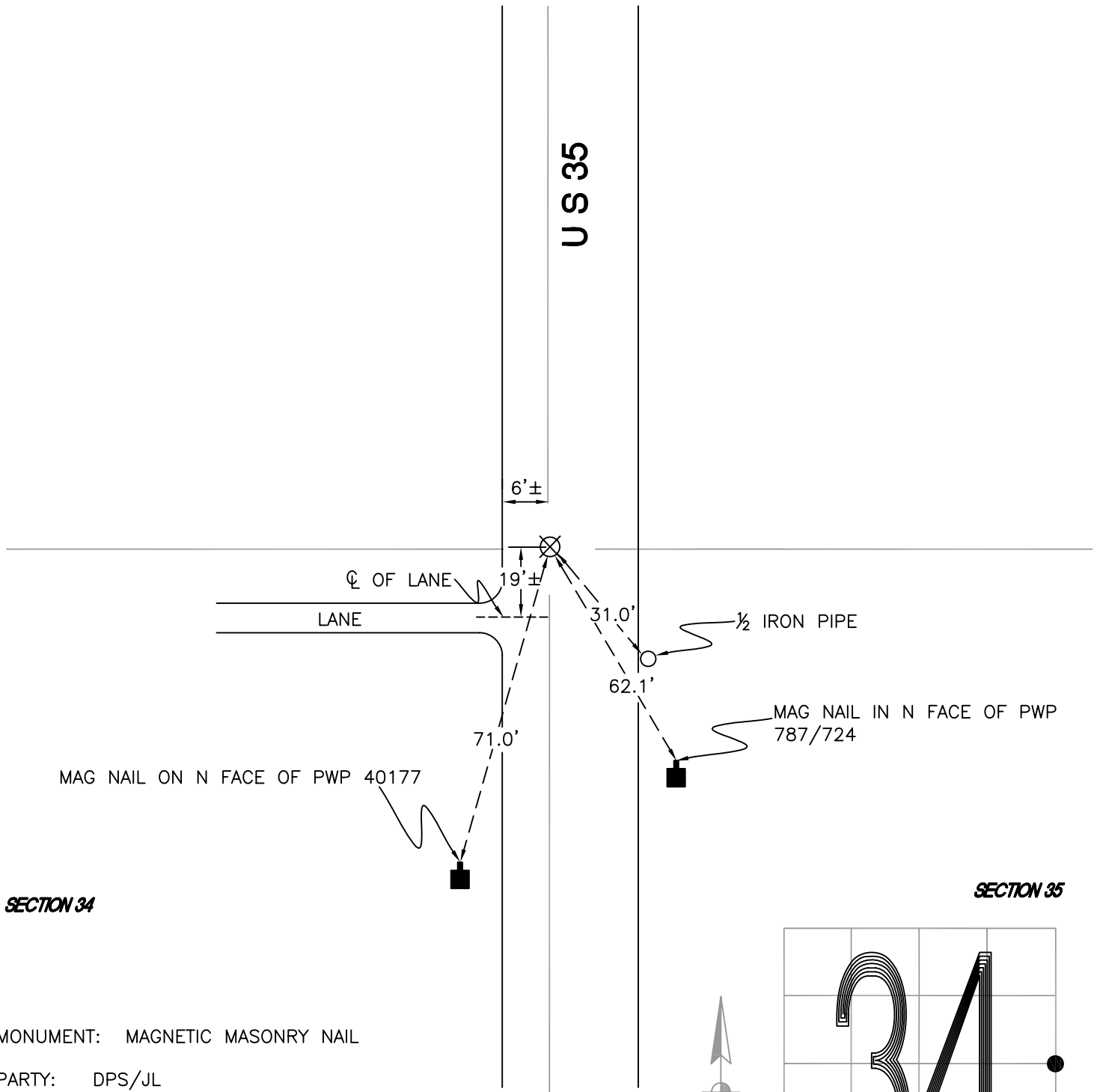
DAVIS TOWNSHIP

T 34 N, R 2 W

X17

SECTION 34

SECTION 35



SECTION 34

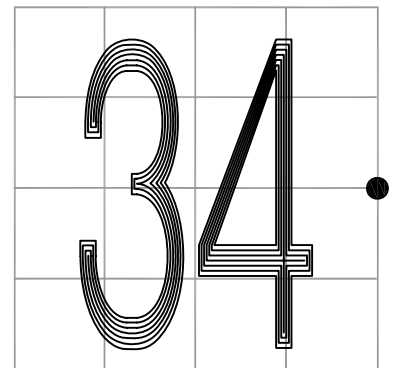
SECTION 35

MONUMENT: MAGNETIC MASONRY NAIL

PARTY: DPS/JL

DATE: 3-17-16

COMMENTS: FOUND BY SJF IN 1986.



CORNER LOCATION IN THE SECTION

X17