

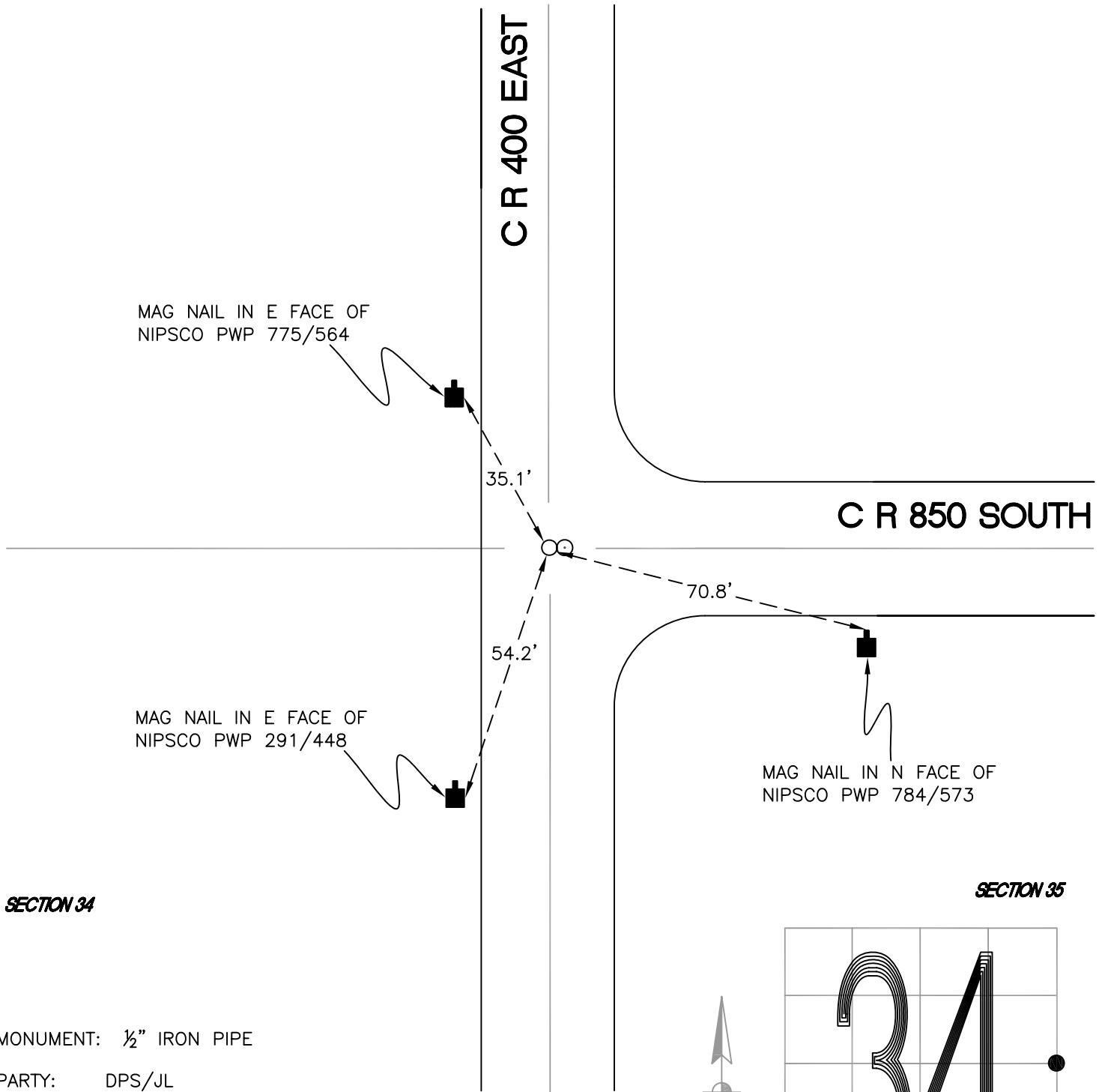
CALIFORNIA TOWNSHIP

T 32 N, R 2 W

X17

SECTION 34

SECTION 35

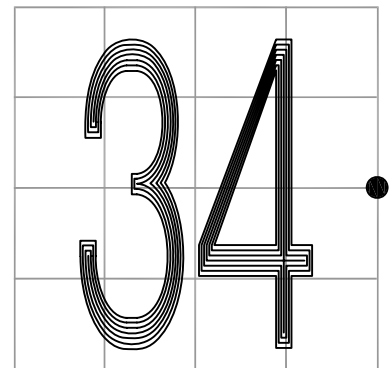


MONUMENT: 1/2" IRON PIPE

PARTY: DPS/JL

DATE: 7/15/14

COMMENTS: RAIL BOLT w/ PUNCH MARK NEXT TO IRON PIPE ON THE EAST. REFERENCED BY C. E. PAUL IN 1929. FOUND BY DPS/JL IN 2012.



CORNER LOCATION IN THE SECTION

X17