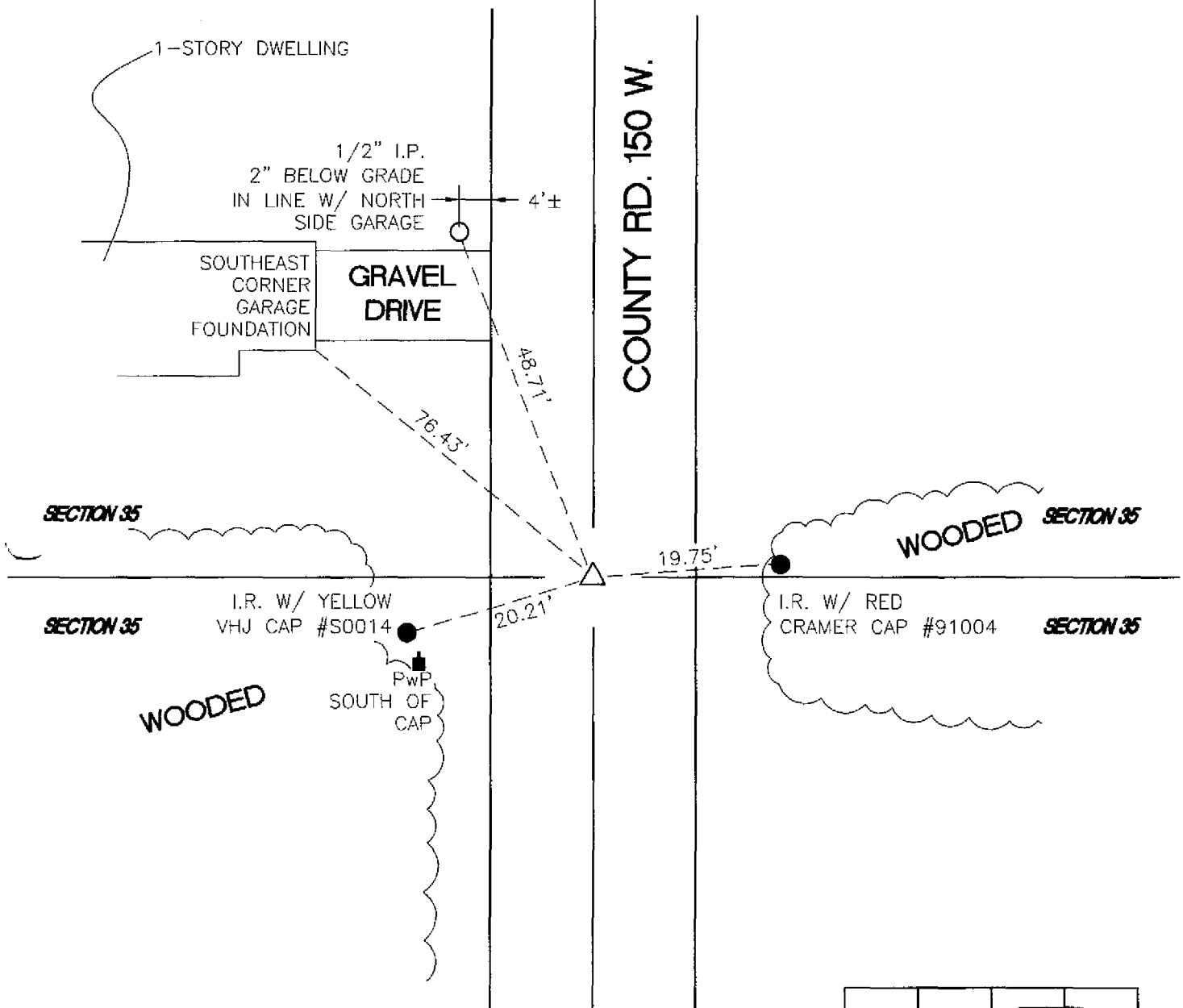


# WAYNE TOWNSHIP

T 32 N, R 3 W  
X19



COUNTY RD. 150 W.

SECTION 35

WOODED SECTION 35

SECTION 35

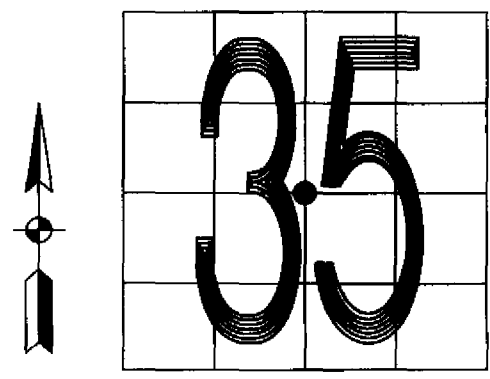
SECTION 35

WOODED

PwP SOUTH OF CAP

MONUMENT: (SEE COMMENTS)  
 CORNER OF: RECORD  USE   
 PARTY: VHJ, COD  
 DATE: 1/12/04

COMMENTS:  
 (F) R.R. SPIKE @ GRADE  
 REPLACED W/ CROSSING BOLT.  
 MARKED W/ PAINTED "X"



CORNER LOCATION IN THE SECTION