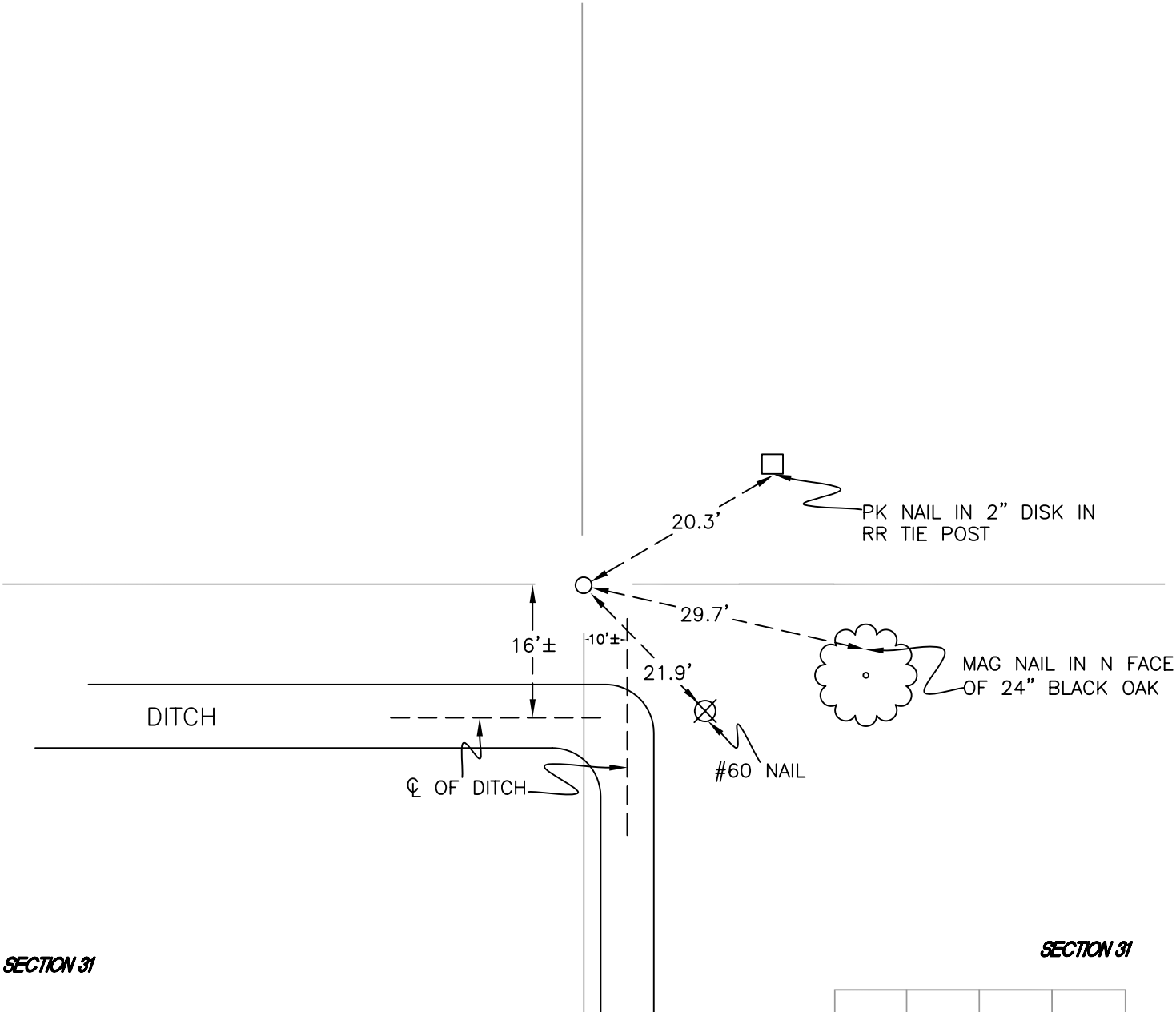


RAILROAD TOWNSHIP
T 32 N, R 4 W
X2

SECTION 31

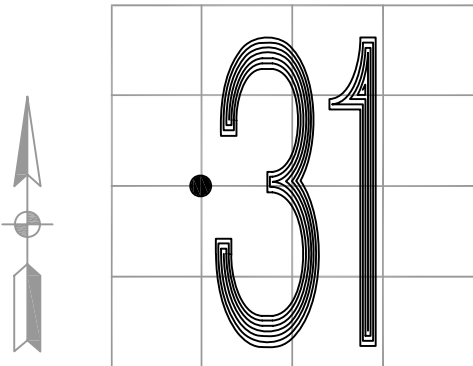
SECTION 31



SECTION 31

SECTION 31

MONUMENT: 1" IRON PIPE
PARTY: DPS/JL
DATE: 5/8/2015
COMMENTS: FOUND BY DWC/SJF IN 1990.



CORNER LOCATION IN THE SECTION

X2