

RAILROAD TOWNSHIP

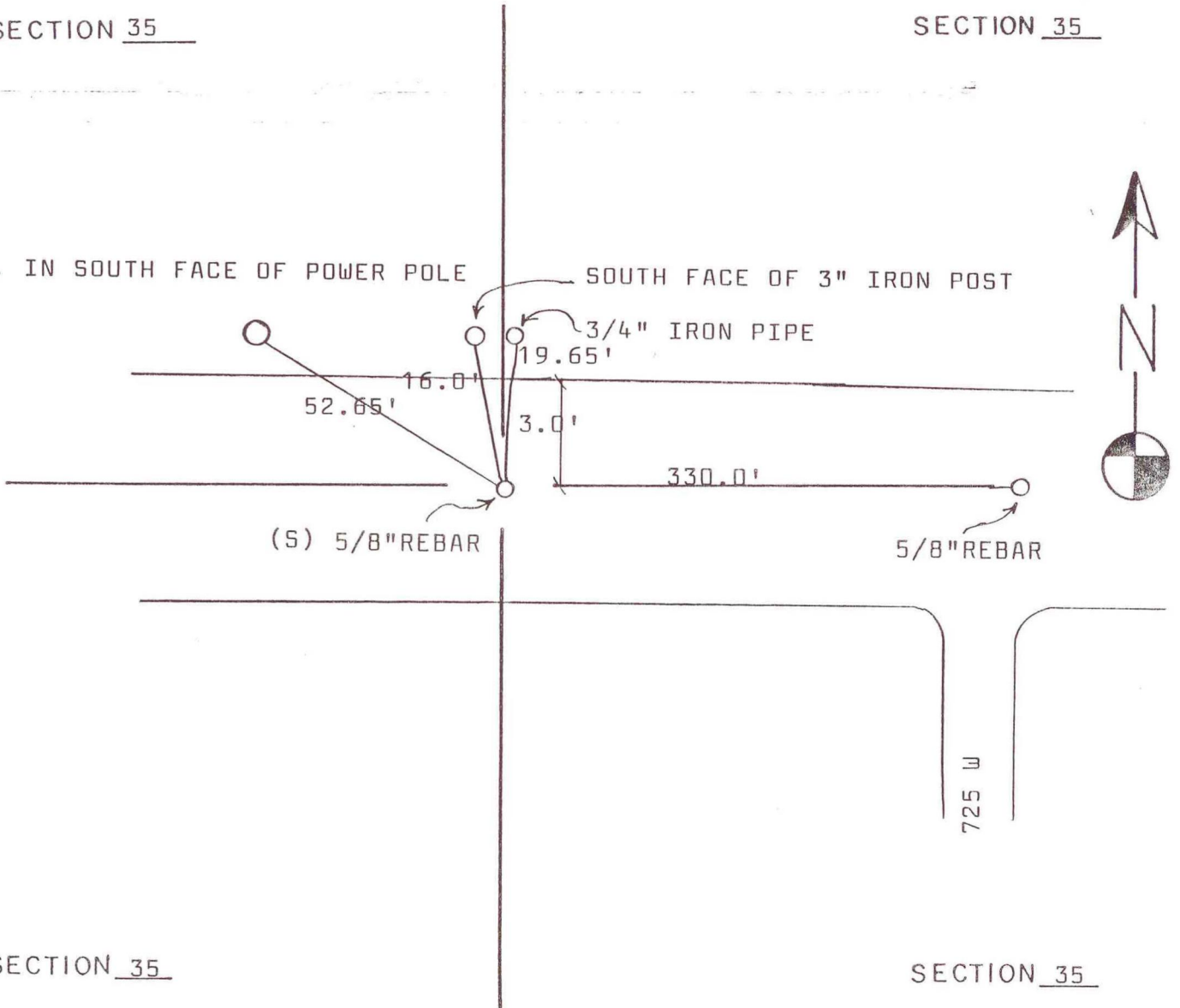
T 33 N, R 4 W

SECTION 35

SECTION 35

DT. IN SOUTH FACE OF POWER POLE

SOUTH FACE OF 3" IRON POST



SECTION 35

SECTION 35

DATE	BY	DATE	BY
3-28-90	SJF DC		

CORNER OF: RECORD USE

SOURCE OF INFORMATION:

TERRITORIAL ENGINEERING